



📍 Glenoran Napping Lane, Longhope, Gloucestershire, GL17 0QH

🔗 Auction Guide £475,000

- For Sale by Online Auction
- Thursday 10th July 2025
- Lot 24
- Guide Price £475,000+

🏠 Freehold

📊 EPC Rating F



LOT 24
FOR SALE BY ONLINE AUCTION
THURSDAY 10th JULY 2025
GUIDE PRICE £475,000+

An attractive 4 bedroom detached house in an large plot of about 0.4 acre with the bonus of a large cellar, double garage and workshop.

Longhope is a village inside the Royal Forest of Dean. These woodlands offer about 24,000 acres of magnificent countryside, award-winning picnic sites, family cycle routes, gorgeous walks, and a huge selection of outdoor pursuits. The desirable village features a shop and Post Office plus an active village hall, artisan bakery and excellent pubs. Hope Brook CofE Primary School sits in the heart of the village. The closest secondary school, Dene Magna School is in Mitcheldean about 3 miles away.

The accommodation comprises on the ground floor; reception hall, living room, sitting room, study, dining room, kitchen, breakfast room, utility and shower room. On the first floor; spacious landing, principle bedroom with ensuite, 3 further bedrooms, large family bathroom and a double doors leading to sun terrace overlooking the rear garden and beyond.

The property also benefits from a large cellar, double garage and workshop. The property has oil fired central heating and UPVC double glazing.

Externally there are large wrap around gardens comprising of areas of lawn and patios with an abundance of mature trees, shrubs. There is scope to extend the property (subject to consents).

At the front is a gated driveway with ample parking for numerous vehicles.

Lapsed outline planning consent was granted in 1993 by Forest of Dean Council under Application No P8018/76/FUL for a detached dwelling at the far end of the garden with new access being created.

What3Words: ///buying.evolving.super
Turn into Napping Lane and the property will be found on the left

Situation & Description

An attractive 4 bedroom detached house in an large plot of about 0.4 acre with the bonus of a large cellar, double garage and workshop.

Longhope is a village inside the Royal Forest of Dean. These woodlands offer about 24,000 acres of magnificent countryside, award-winning picnic sites, family cycle routes, gorgeous walks, and a huge selection of outdoor pursuits. The desirable village features a shop and Post Office plus an active village hall, artisan bakery and excellent pubs. Hope Brook CofE Primary School sits in the heart of the village. The closest secondary school, Dene Magna School is in Mitcheldean about 3 miles away.

The accommodation comprises on the ground floor; reception hall, living room, sitting room, study, dining room, kitchen, breakfast room, utility and shower room. On the first floor; spacious landing, principle bedroom with ensuite, 3 further bedrooms, large family bathroom and a double doors leading to sun terrace overlooking the rear garden and beyond.

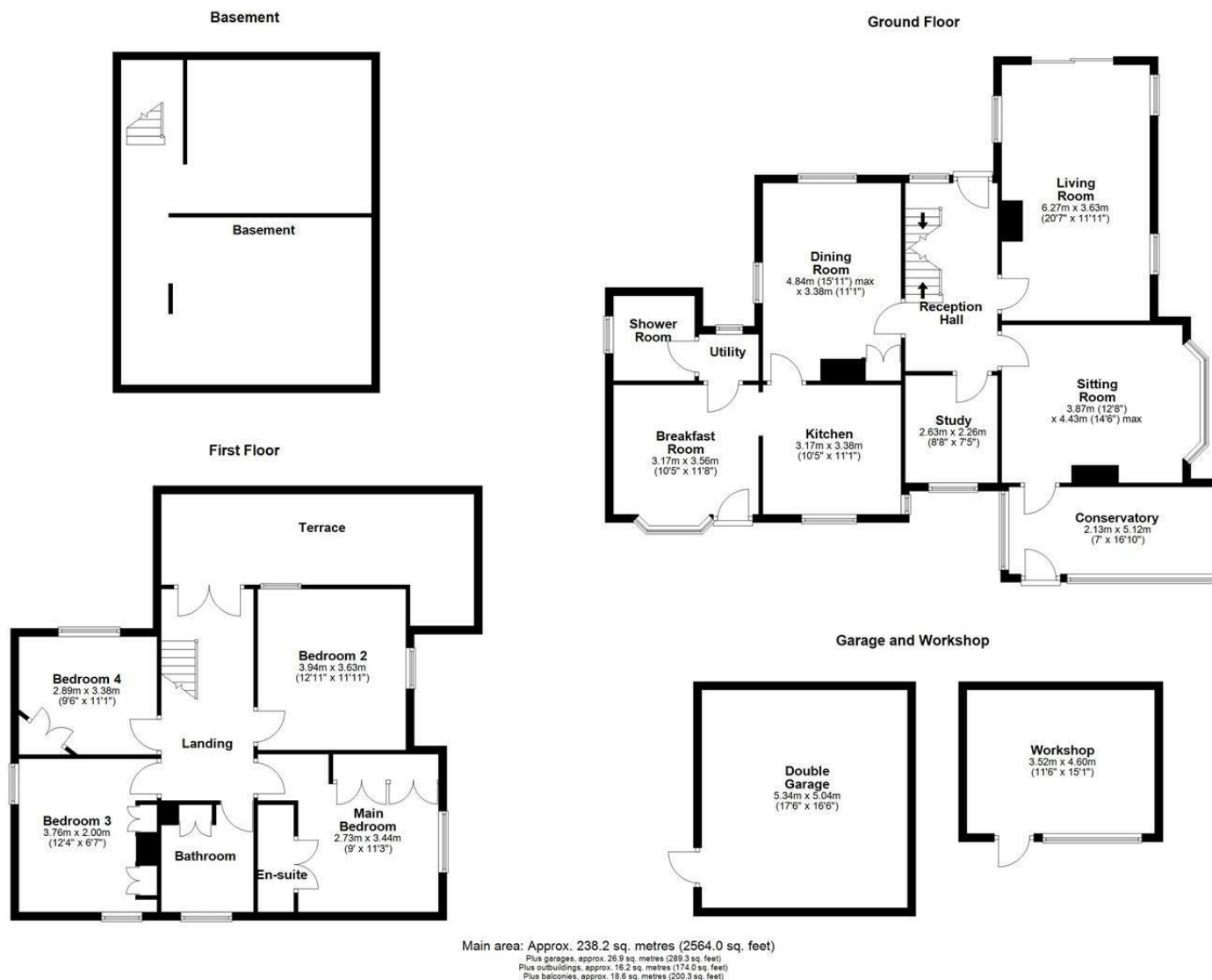
The property also benefits from a large cellar, double garage and workshop. The property has oil fired central heating and UPVC double glazing.

Externally there are large wrap around gardens comprising of areas of lawn and patios with an abundance of mature trees, shrubs. There is scope to extend the property (subject to consents).

At the front is a gated driveway with ample parking for numerous vehicles.

Lapsed outline planning consent was granted in 1993 by Forest of Dean Council under Application No P8018/76/FUL for a detached dwelling at the far end of the garden with new access being created.





Disclaimer These particulars, whilst believed to be accurate are set out as a general outline only for guidance and do not constitute any part of an offer or contract. Intending purchasers should not rely on them as statements of representation of fact, but must satisfy themselves by inspection or otherwise as to their accuracy. No person in this firm's employment has the authority to make or give any representation or warranty in respect of the property. All measurements and distances are approximate only. Your home is at risk if you do not keep up repayments on a mortgage or other loan secured on it.