



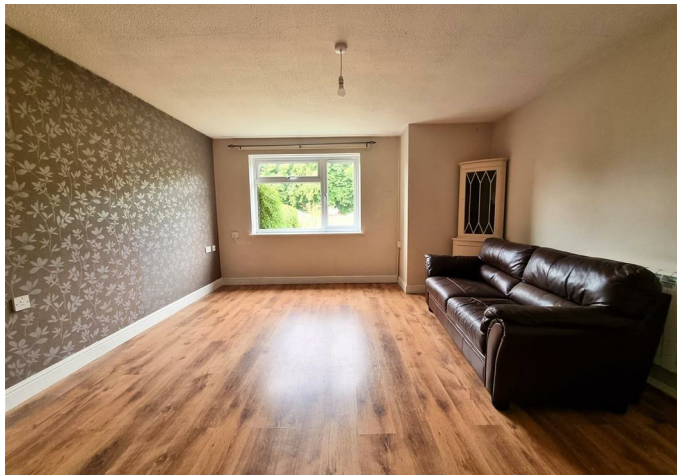
📍 3 Biss Close, Upton Scudamore, Warminster, Wiltshire, BA12 0AT

🔗 Auction Guide £150,000

- For Sale by Online Auction
- Thursday 17th October 2024
- Lot 19
- Guide Price £150,000+

🏠 Freehold

📊 EPC Rating F



LOT 19
FOR SALE BY ONLINE AUCTION
THURSDAY 17th October 2024
GUIDE PRICE £150,000+

2 Bedroom mid-terrace bungalow situated on the outskirts of the this popular village. In need of some modernisation.

The accommodation comprises; entrance hall, lounge, kitchen, utility room, 2 bedrooms and a bathroom. There is double glazing and electric heating.

There is a small garden at the front overlooking the village green area. At the rear is an enclosed garden mainly laid to lawn with well stocked shrubs and borders. There is a rear pedestrian access. On-street parking available nearby.

Situation & Description

2 Bedroom mid-terrace bungalow situated on the outskirts of the this popular village. In need of some modernisation.

The village offers a parish church and a well-regarded village pub – The Angel Inn, part of the La Campagna chain of Italian Restaurants with takeaway facilities. There are a more extensive array of facilities in Warminster, about 2 miles away. Warminster also benefits from a mainline railway station to London Waterloo with the nearby A303 providing road links to London to the east and Exeter to the west. Westbury train line is three miles away with a mainline to London Paddington.

The accommodation comprises; entrance hall, lounge, kitchen, utility room, 2 bedrooms and a bathroom. There is double glazing and electric heating.

There is a small garden at the front overlooking the village green area. At the rear is an enclosed garden mainly laid to lawn with well stocked shrubs and borders. There is a rear pedestrian access. On-street parking available nearby.

What3Words///elections.sideburns.bravo

Viewings

To arrange a viewing, contact: Auction office on 01249 765200

There will be numerous pre-arranged open house viewing slots lasting for 30 minutes and you can book in by contacting the Auctioneers.

If you have any concerns with viewings, please contact the relevant Strakers office and we would be happy to discuss them with you and hopefully put you at ease.

Online Auction

In order to bid at Strakers Online Auctions, you will first need to create an account by providing your contact details. You will be asked to read and accept our Online Auction Terms and Conditions. In order to bid online, you will be required to register a credit or debit card for the bidder security deposit. Strakers are required by law to carry out an online anti-money laundering check on all persons wishing to bid. In general terms, you are strongly advised to view the property and take professional advice as to its condition and suitability.

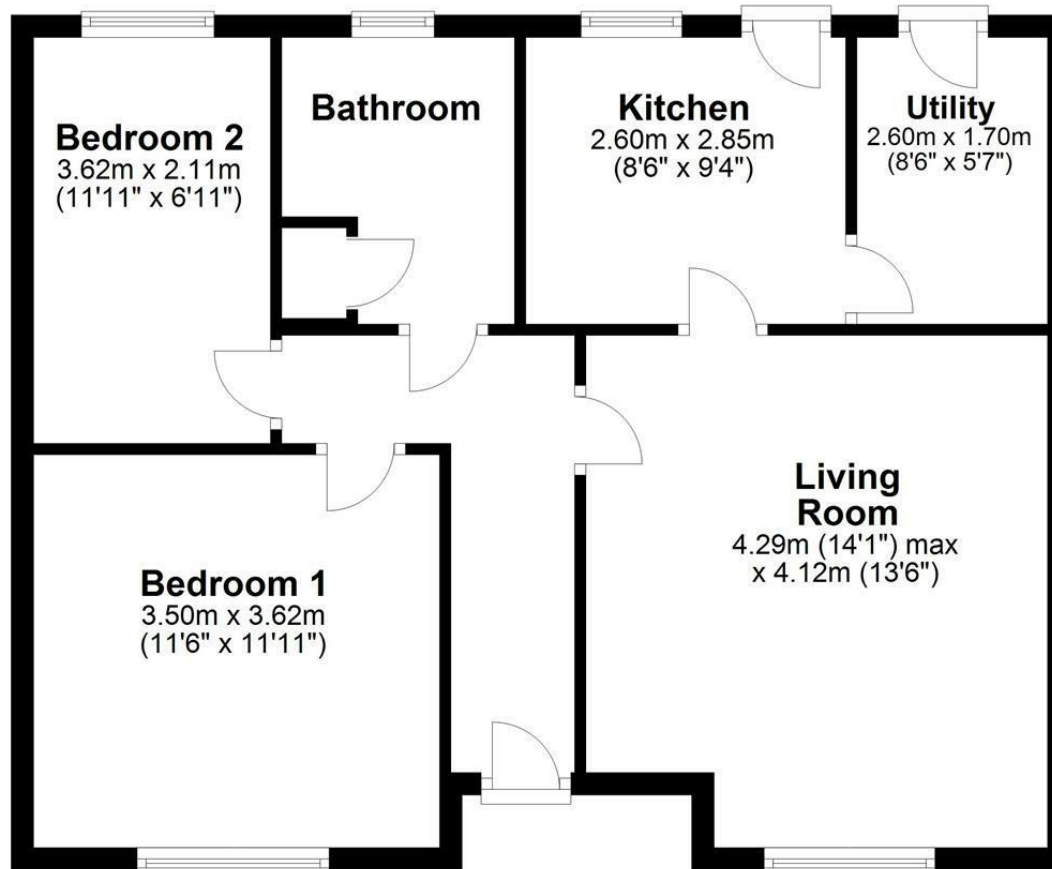
When the auction opens at 8am the day of the auction, you will be able to place bids in line with the pre-determined bid increment levels, using the bid increase (+) and decrease (-) buttons provided. It is recommended you check your web browser will allow you to bid in good time as some browsers' security can block the ability to bid. We recommend using Google Chrome when possible.

We offer property for sale by immediate, unconditional contract. This means that the fall of the electronic gavel constitutes an exchange of contracts between the buyer and seller. Both parties are legally bound to complete the transaction usually within 20 working days following the close of the auction but this will be confirmed within the legal documentation.



Floor Plan

Approx. 63.7 sq. metres (685.3 sq. feet)



Total area: approx. 63.7 sq. metres (685.3 sq. feet)

Illustration for identification purposes only, measurements are approximate, not to scale.
Plan produced using PlanUp.

Disclaimer These particulars, whilst believed to be accurate are set out as a general outline only for guidance and do not constitute any part of an offer or contract. Intending purchasers should not rely on them as statements of representation of fact, but must satisfy themselves by inspection or otherwise as to their accuracy. No person in this firm's employment has the authority to make or give any representation or warranty in respect of the property. All measurements and distances are approximate only. Your home is at risk if you do not keep up repayments on a mortgage or other loan secured on it.