

39 Maple Terrace

KELTY, FIFE, KY4 0LP



*TWO-BEDROOM TERRACED HOME,
BEAUTIFULLY MAINTAINED AND PRESENTED*



01333 400 400



www.mcewanfraserlegal.co.uk



info@mcewanfraserlegal.co.uk



McEwan Fraser Legal is delighted to present this two-bedroom house in Kelty. This charming two-bedroom terraced property offers stylish, well-maintained accommodation in a convenient and welcoming setting.

Neatly landscaped to the front, the home opens into a bright and inviting lounge/diner, providing an excellent space for everyday living and relaxed entertaining.





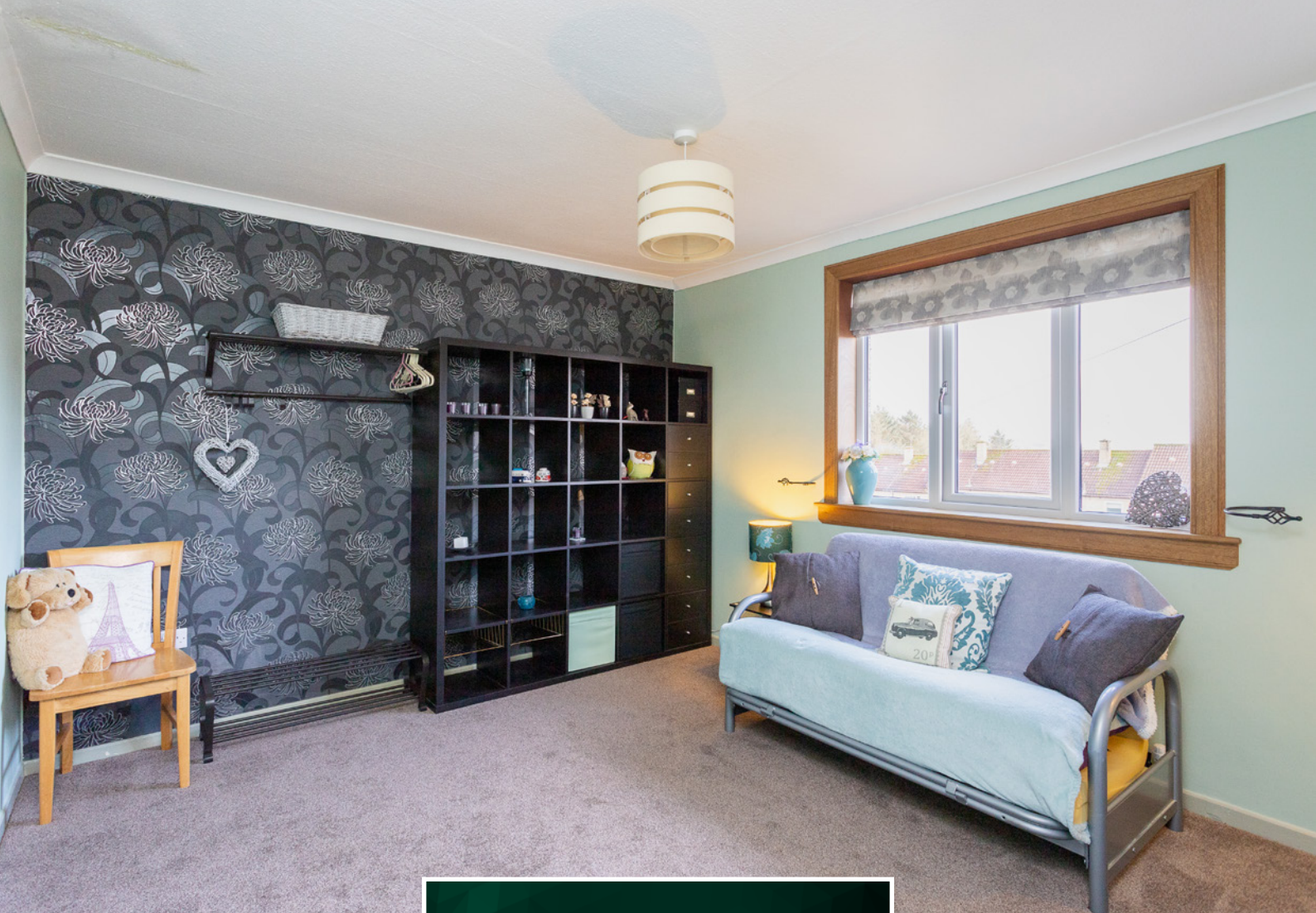
To the rear, the country-style kitchen brings warmth and character, featuring attractive cabinetry, generous work surfaces and a homely, traditional feel.





Upstairs, there are two well-proportioned double bedrooms, both presented in immaculate condition, along with a modern shower room finished to a high standard.

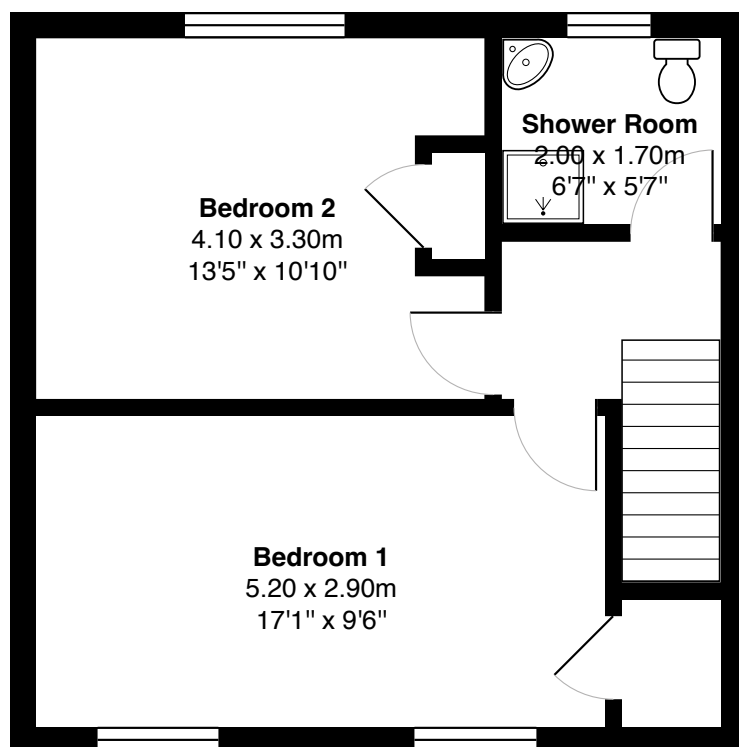
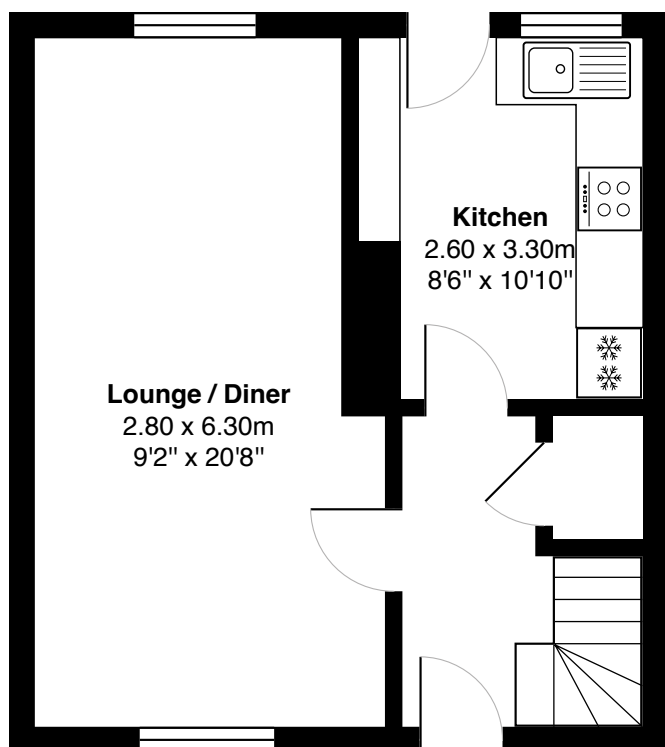




Bedroom 2







Gross internal floor area (m²): 74m²

EPC Rating: C

Floor Plan



Externally, the property benefits from a private rear garden, ideal for outdoor dining, gardening or simply unwinding in the warmer months. Thoughtfully maintained and beautifully presented throughout, this lovely home is ready to move straight into and enjoy.





Kelty is a well-established and welcoming village in Fife, offering a peaceful residential setting with convenient access to local amenities. The village provides a range of shops, cafés, and essential services, along with community facilities including parks, recreational areas, and local schools catering to all ages.

Transport links are excellent, with nearby bus routes connecting to surrounding towns and cities, while road access via the A92 and M90 ensures easy commuting to Edinburgh, Dunfermline, and beyond. Surrounded by Fife's scenic countryside, Kelty combines the charm of village life with practicality, making it an appealing location for families, professionals, and those seeking a balanced lifestyle.

The Location

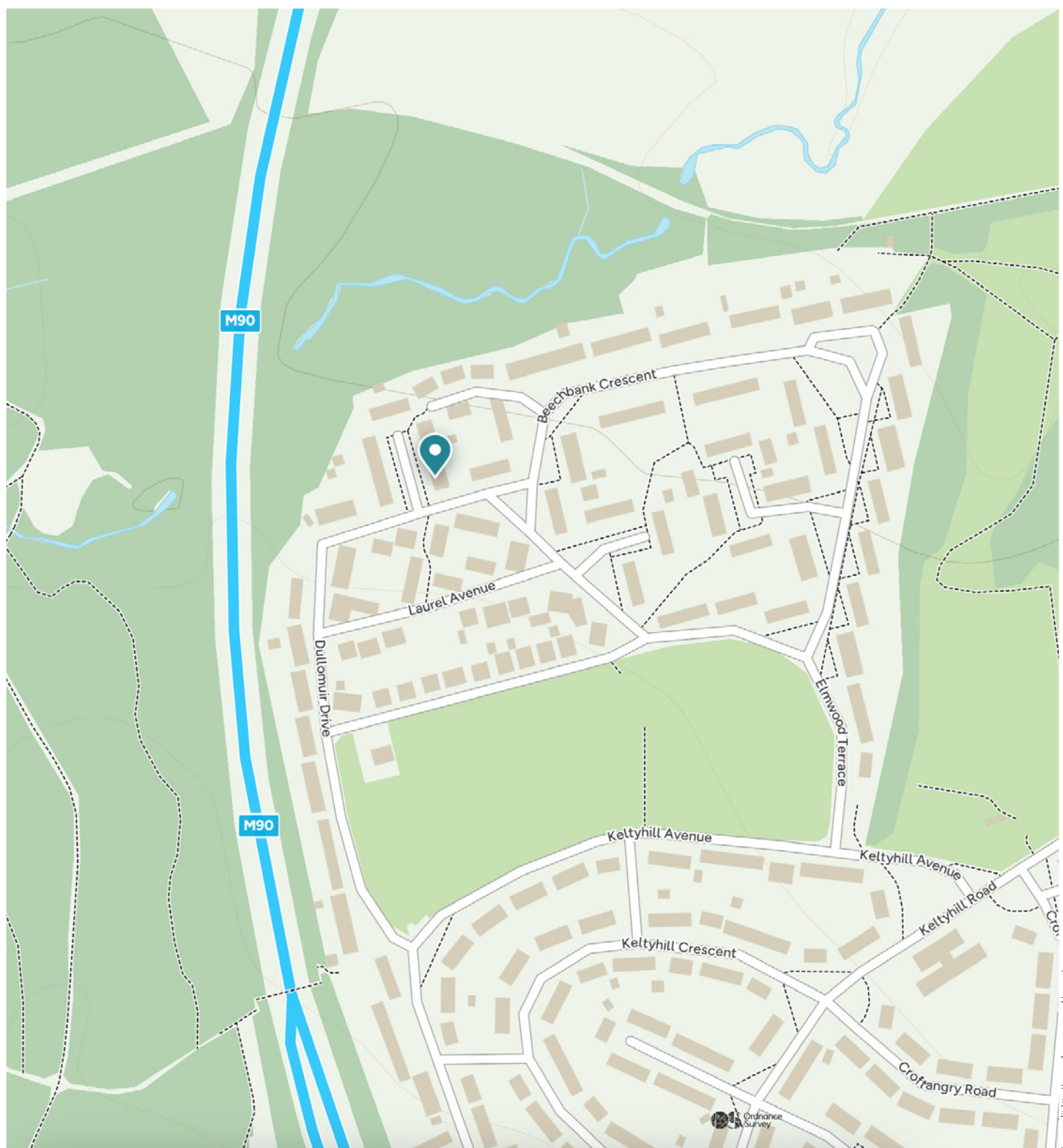


Image credit: <https://www.ordnancesurvey.co.uk/osmap/>

McEwan Fraser Legal

Solicitors & Estate Agents

Tel. 01333 400 400

www.mcewanfraserlegal.co.uk

info@mcewanfraserlegal.co.uk

Part
Exchange
Available



THE SUNDAY TIMES
THE SUNDAY TIMES



Text and description
JAYNE SMITH
Corporate Account Manager



Professional photography
GRANT LAWRENCE
Photographer



Layout graphics and design
ALAN SUTHERLAND
Designer

Disclaimer: The copyright for all photographs, floorplans, graphics, written copy and images belongs to McEwan Fraser Legal and use by others or transfer to third parties is forbidden without our express consent in writing. Prospective purchasers are advised to have their interest noted through their solicitor as soon as possible in order that they may be informed in the event of an early closing date being set for the receipt of offers. These particulars do not form part of any offer and all statements and photographs contained herein are for illustrative purposes and are not guaranteed or warranted. Buyers must satisfy themselves for the accuracy and authenticity of the brochure and should always visit the property to satisfy themselves of the property's suitability and obtain in writing via their solicitor what's included with the property including any land. The dimensions provided may include, or exclude, recesses intrusions and fitted furniture. Any measurements provided are for guide purposes only and have been taken by electronic device at the widest point. Any reference to alterations to, or use of, any part of the property does not mean that any necessary planning, building regulations or other consent has been obtained. A buyer must find out by inspection or in other ways that all information is correct. None of the appliances/services stated or shown in this brochure have been tested by ourselves and none are warranted by our seller or MFL.