

Rosebank Cottage

WEST ROAD, SALINE, FIFE, KY12 9UN



*BEAUTIFULLY PRESENTED
FOUR BEDROOM COTTAGE*



01383 660 570



www.mcewanfraserlegal.co.uk



info@mcewanfraserlegal.co.uk





The property has been sympathetically extended with immaculate gardens which are very well laid out and will transport any viewer to a very peaceful place.

The accommodation consists of a bright and spacious lounge, with a wood-burning stove, which owing to its shape would also suit a range of furniture configurations. There is a beautifully designed kitchen/family room, with separate fridge and freezer, dishwasher and AGA. It is finished with a lovely range of light wood fitted units, making it a great space for the chef to serve up a marvellous meal. There is space for a large dining table for entertaining on more formal occasions with family and friends. There is a separate large utility room with washing machine and dryer as well as loads of extra storage.

A large bedroom is located on the ground level with views to the front of the property. There is also a large luxurious downstairs spa-like bathroom with a beautifully appointed 3 piece suite including a roll-top bath.





Kitchen/Diner











Journey to the upper level where you will find three double bedrooms with the impressive master offering a range of furniture configurations. The three-piece en-suite shower room is also located on the upper level.







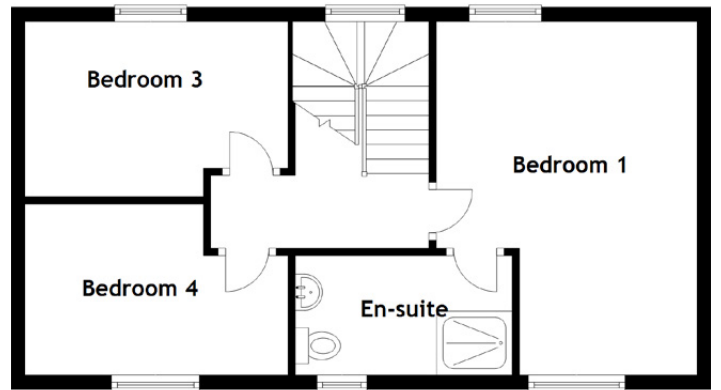
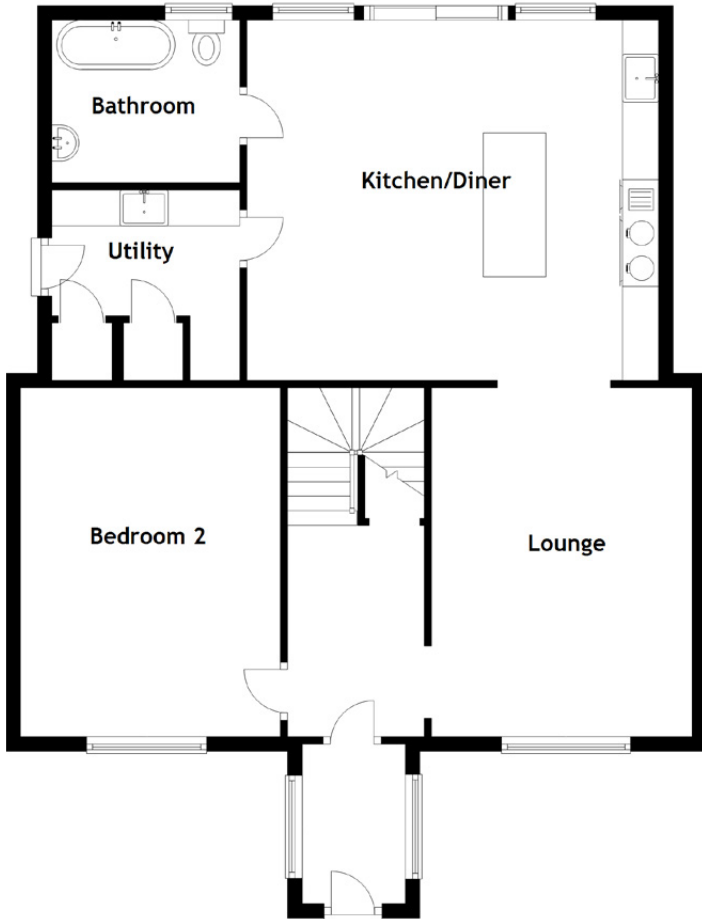
Bedroom 2





Bedroom 3





Approximate Dimensions
(Taken from the widest point)

Kitchen/Diner	5.69m (18'8") x 4.99m (16'4")
Lounge	4.83m (15'10") x 3.61m (11'10")
Utility	2.68m (8'10") x 2.64m (8'8")
Bedroom 1	4.88m (16') x 3.61m (11'10")
Bedroom 2	4.87m (16') x 3.60m (11'10")
Bedroom 3	3.60m (11'10") x 2.42m (7'11")

Bedroom 4	3.64m (11'11") x 2.45m (8')
Bathroom	2.60m (8'6") x 2.22m (7'3")
En-Suite	3.00m (9'10") x 1.80m (5'11")

Gross internal floor area (m²): 137m²

EPC Rating: D

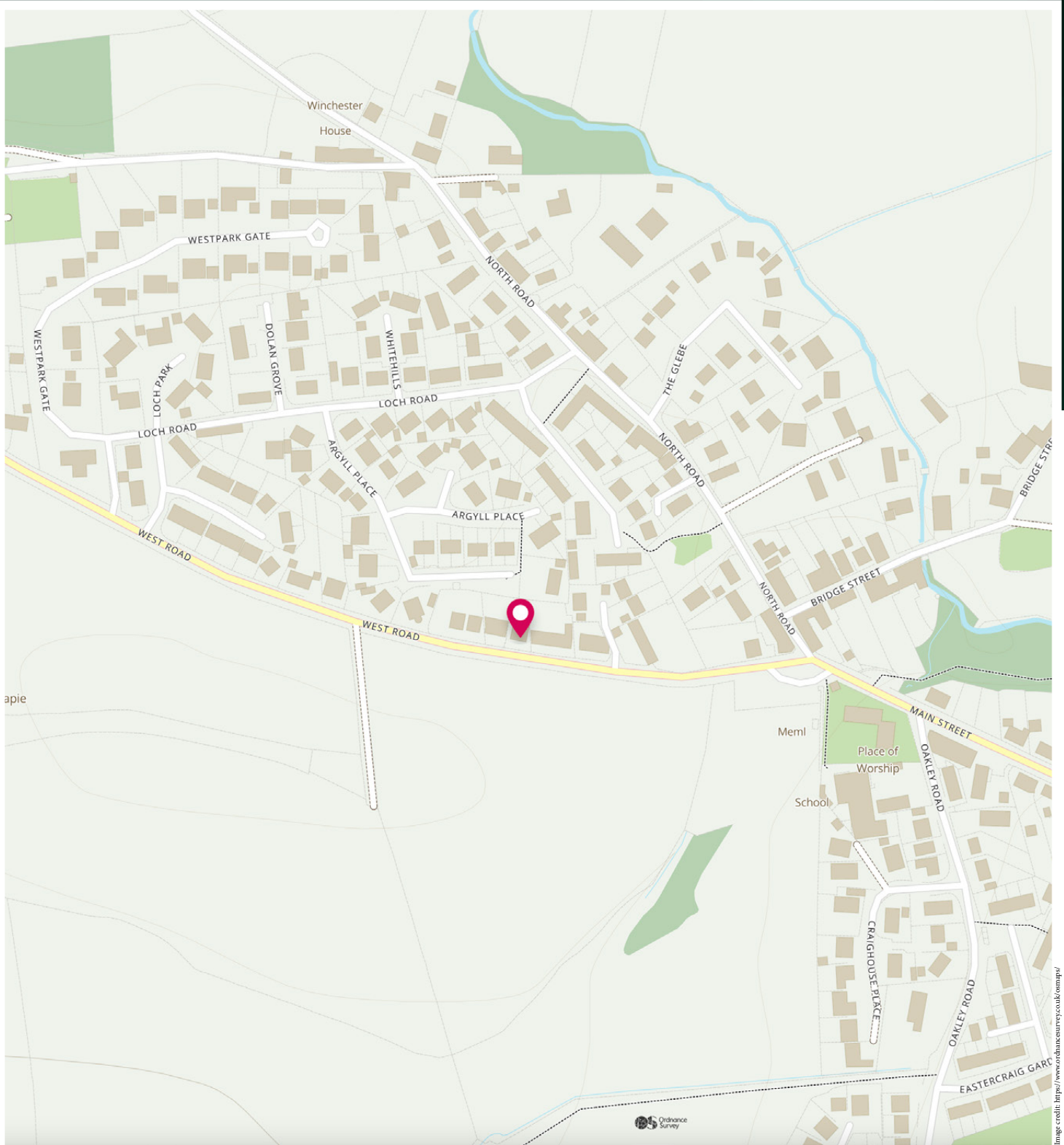


Some properties tick all the boxes; this is definitely one of them. Early viewing is strongly advised for this charming period property. Some furniture may be available with the sale.

The home is kept warm, comfortable and cosy via the double glazing and gas central heating. The garden space is impressive with its lovely decked area with an electrically operated awning, and a shed with electricity and a fridge & freezer. It offers a great place to relax unwind and enjoy a glass of wine at the end of a hard day. The garden is pet friendly and secure.

This great home would make an ideal buy for many people, from a family to a retired couple or even just someone that always dreamed of stepping back and letting the world get on with it, in their own perfect piece of heaven. A large driveway completes the accommodation on offer.

The Property



McEwan Fraser Legal

Solicitors & Estate Agents

Tel. 01383 660 570

www.mcewanfraserlegal.co.uk

info@mcewanfraserlegal.co.uk

Part
Exchange
Available



THE SUNDAY TIMES
THE TIMES



Text and description
JAY STEIN
Area Sales Manager



Professional photography
LEIGH ROLLO
Photographer



Layout graphics and design
ALAN SUTHERLAND
Designer

Disclaimer: The copyright for all photographs, floorplans, graphics, written copy and images belongs to McEwan Fraser Legal and use by others or transfer to third parties is forbidden without our express consent in writing. Prospective purchasers are advised to have their interest noted through their solicitor as soon as possible in order that they may be informed in the event of an early closing date being set for the receipt of offers. These particulars do not form part of any offer and all statements and photographs contained herein are for illustrative purposes and are not guaranteed or warranted. Buyers must satisfy themselves for the accuracy and authenticity of the brochure and should always visit the property to satisfy themselves of the property's suitability and obtain in writing via their solicitor what's included with the property including any land. The dimensions provided may include, or exclude, recesses intrusions and fitted furniture. Any measurements provided are for guide purposes only and have been taken by electronic device at the widest point. Any reference to alterations to, or use of, any part of the property does not mean that any necessary planning, building regulations or other consent has been obtained. A buyer must find out by inspection or in other ways that all information is correct. None of the appliances/services stated or shown in this brochure have been tested by ourselves and none are warranted by our seller or MFL.