

Tigh Na Allt Reiff

ACHILTIBUIE, ULLAPOOL, HIGHLAND, IV26 2YS



Introducing Tigh Na Allt, a simply stunning four-bedroom detached home nestled in an elevated position overlooking the serene waters of Reiff



01463 211 116



www.mcewanfraserlegal.co.uk



info@mcewanfraserlegal.co.uk



Introducing Tigh Na Allt (meaning "House on the Burn"), a simply stunning four-bedroom detached home nestled in an elevated position overlooking the serene waters of Reiff. Prepare to be captivated by the breathtaking views that greet you from every window, each offering a unique perspective of the surrounding landscape.

Designed to maximise the wow factor, the layout of this remarkable property has been ingeniously crafted with a reverse design, ensuring that the living areas and kitchen are situated on the upper floor to fully immerse you in the magnificent vistas.

THE SITTING AREA



Step inside to discover the ground floor, where two spacious double bedrooms await, alongside a convenient utility room with internal access to the garage, a cosy sitting area, and a convenient shower room.

BEDROOM 1



BEDROOM 2



THE SHOWER ROOM



THE UTILITY & GARAGE



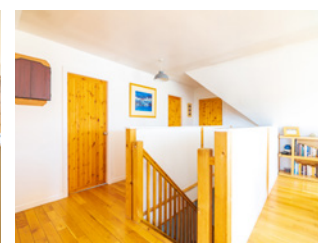


Ascend the stairs to the upper level, where an awe-inspiring kitchen/diner/family room awaits, boasting dual-aspect views that will leave you spellbound. Two additional bedrooms offer comfort and privacy, while a family bathroom ensures relaxation after a day of adventure. Finally, unwind in the lounge, boasting the best views in the house and providing the perfect backdrop for moments of tranquillity.

THE BATHROOM



THE KITCHEN/DINER



THE LOUNGE



the living areas and kitchen are situated on the upper floor to fully immerse you in the magnificent vistas



BEDROOM 3



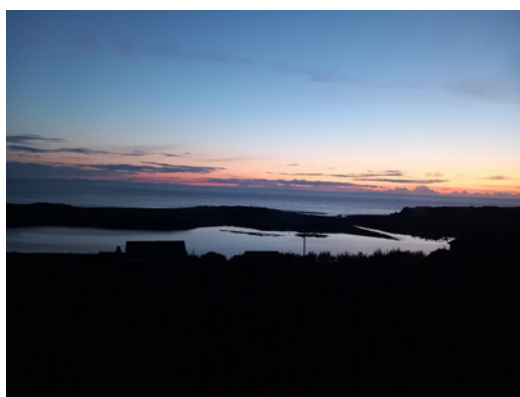
BEDROOM 4



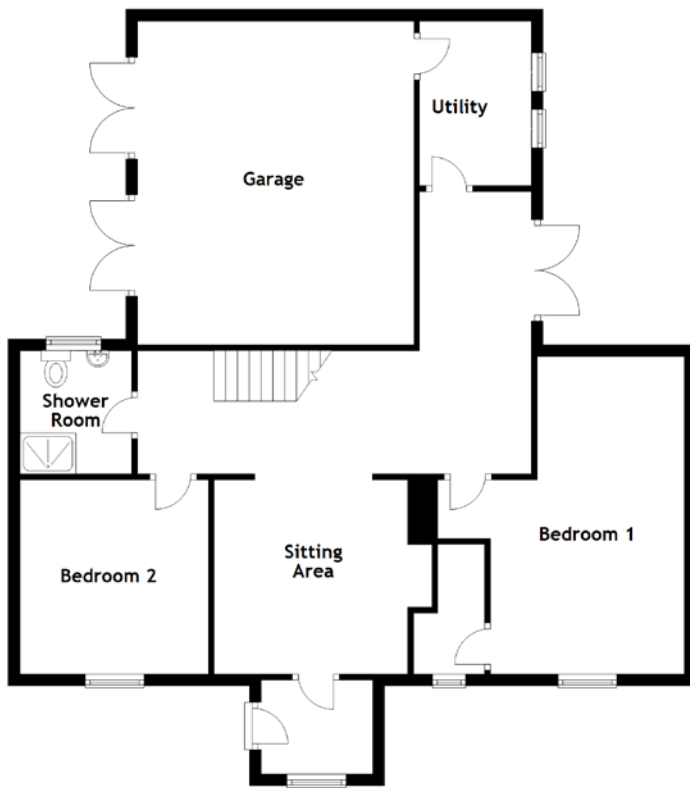
Externally, Tigh Na Allt occupies a sizeable plot with a garden at the front, allowing you to soak in the panoramic views and watch the local wildlife, including deer, stoats and otters, as well as basking sharks and seals in the Bay of Reiff, and sea eagles. Parking is conveniently located to the side, offering easy access to the garage for your vehicle. Thanks to Highland Broadband, reliable internet is at your fingertips, enabling seamless remote work opportunities. With ample space indoors and in the garden, there's plenty of potential for personalisation. Additionally, the option to extend into the garage presents exciting possibilities for the future

Indulge in the epitome of coastal living at Tigh Na Allt, where luxury meets natural beauty in perfect harmony.

EXTERNALS



FLOOR PLAN, DIMENSIONS & MAP



Approximate Dimensions (Taken from the widest point)

Sitting Area	3.70m (12'2") x 3.30m (10'10")
Bedroom 1	5.40m (17'8") x 4.20m (13'9")
Bedroom 2	3.30m (10'10") x 3.20m (10'6")
Utility	2.80m (9'2") x 1.90m (6'3")
Garage	5.50m (18'1") x 4.70m (15'5")
Shower Room	2.10m (6'11") x 1.90m (6'3")

Kitchen/Diner

Lounge

Bedroom 3

Bedroom 4

Bathroom

7.80m (25'7") x 7.80m (25'7")

5.40m (17'8") x 4.10m (13'5")

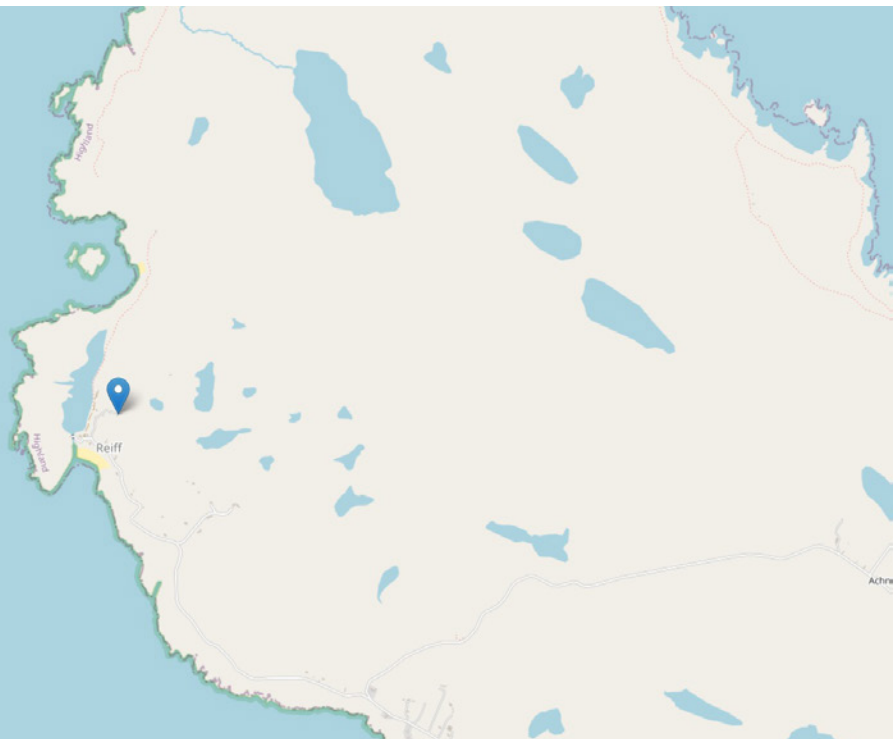
3.60m (11'10") x 3.20m (10'6")

3.40m (11'2") x 3.20m (10'6")

1.90m (6'3") x 1.80m (5'11")

Gross internal floor area (m²): 167m²

EPC Rating: C



THE LOCATION

Perched majestically overlooking the Summer Isles and the vast expanse of the open sea, Achiltibuie stands as a testament to the awe-inspiring beauty of the remote northwest coast. Within this coastal haven lies a detached home nestled in the quaint village of Reiff, offering a true escape from the hustle and bustle of everyday life. Reiff is a haven for nature lovers, boasting a rugged coastline adorned with sandy beaches and rocky shores. From the comfort of this charming abode, one can bask in breathtaking vistas stretching southwards to the mainland mountains and westwards across the Minch to the rugged peaks of Harris. To the north, a tranquil track winds its way past the serene Loch of Reiff, leading to the untamed wilderness of the Coigach Peninsula, where sheer cliffs overlook the azure waters of Camas Eilean Ghlais Bay.





Quietude reigns supreme in Reiff, making it a sanctuary for those seeking solace in nature's embrace. Witness the majestic dance of minke whales and white-beaked dolphins in the coastal waters, particularly during late summer and early autumn. Ornithologists will delight in the opportunity to observe an array of birdlife, including storm petrels, greylags, and great skuas, which find refuge in the Summer Isles during the breeding season.

As night falls, the absence of light pollution unveils a celestial spectacle, with the Northern Lights often gracing the northern skies—a mesmerising sight against the backdrop of endless twilight in the height of summer.

Venture beyond the shores of Reiff on exhilarating boat trips to the Summer Isles, where a plethora of activities awaits, from fishing and birdwatching to sailing and cliff climbing. Closer to home, explore the geology trail, a fascinating journey through the village's landscape, offering insights into the Earth's history and geological wonders.

Experience the serenity and natural splendour of Reiff—a coastal retreat where every moment is an opportunity to connect with the untamed beauty of the Scottish wilderness.




Solicitors & Estate Agents

Tel. 01463 211 116
www.mcewanfraserlegal.co.uk
info@mcewanfraserlegal.co.uk

Part
Exchange
Available



Text and description
CRAIG PETERS
Surveyor



Layout graphics and design
ALLY CLARK
Designer

Disclaimer: The copyright for all photographs, floorplans, graphics, written copy and images belongs to McEwan Fraser Legal and use by others or transfer to third parties is forbidden without our express consent in writing. Prospective purchasers are advised to have their interest noted through their solicitor as soon as possible in order that they may be informed in the event of an early closing date being set for the receipt of offers. These particulars do not form part of any offer and all statements and photographs contained herein are for illustrative purposes and are not guaranteed or warranted. Buyers must satisfy themselves for the accuracy and authenticity of the brochure and should always visit the property to satisfy themselves of the property's suitability and obtain in writing via their solicitor what's included with the property including any land. The dimensions provided may include, or exclude, recesses intrusions and fitted furniture. Any measurements provided are for guide purposes only and have been taken by electronic device at the widest point. Any reference to alterations to, or use of, any part of the property does not mean that any necessary planning, building regulations or other consent has been obtained. A buyer must find out by inspection or in other ways that all information is correct. None of the appliances/services stated or shown in this brochure have been tested by ourselves and none are warranted by our seller or MFL.