



Canterbury Way | | Stevenage | SG1 4EA

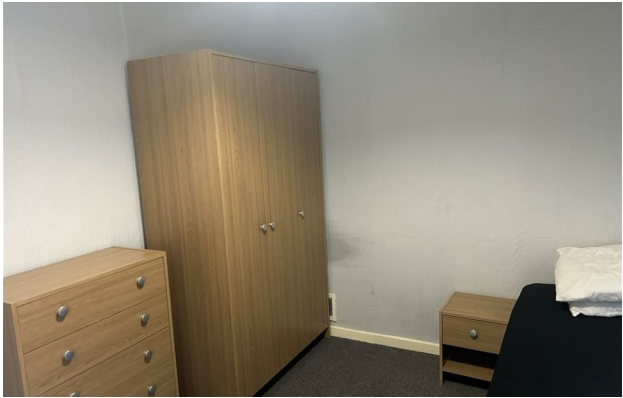
£549 Per Calendar Month



Canterbury Way |  
Stevenage | SG1 4EA  
£549 Per Calendar Month

A single room in a shared HMO, with a shared kitchen and bathroom. Viewings are highly recommended. Single occupancy only.

- Single occupancy
- Double Room
- HMO



Energy Efficiency Rating		
	Current	Potential
Very energy efficient - lower running costs		
(92 plus) A		
(81-91) B		
(69-80) C		
(55-68) D		
(39-54) E		
(21-38) F		
(1-20) G		
Not energy efficient - higher running costs		
England & Wales		EU Directive 2002/91/EC

Office 9  
Kellard House London Road  
Woolmer Green  
Hertfordshire  
SG3 6FP  
01438231200

property@marksimonestates.co.uk  
http://www.marksimonestates.co.uk