



2 Irving Dale, Old Farm Park – MK7 8RG

£760,000 Freehold

4/5 Bedroom Detached • Extended to the Rear and Side • Potential Annexe • Double Garage & Parking for Numerous Cars • Small Cu-De-Sac of just 5 Detached Homes • 3 Bath/Shower Rooms • 31' Kitchen/Breakfast/Family Room • No Upper Chain



TAYLORWALSH
PROPERTY CONSULTANTS

Entrance Hall

Window to front, radiator, stairs first floor landing.

Cloakroom

Window to front, white suite comprising, wash hand basin and low-level WC, tiled splashback, radiator.

Lounge

16' 4" x 13' 2" (4.98m x 4.01m)

Four windows to rear, under floor heating, double height with vaulted ceilings, door to garden.

Dining Room

15' 2" x 12' 4" (4.62m x 3.76m)

Window to rear, tiled flooring, under floor heating, door to garden.

Sitting Room

18' 4" x 13' 1" (5.59m x 3.99m)

Window to side, two windows to rear, under floor heating, vaulted ceiling, stairs to mezzanine floor, double door to garden.

Study

10' 10" x 9' 2" (3.30m x 2.79m)

Window to front, under floor heating.

Kitchen.Breakfast/Family Room

31' 11" x 12' 8" (9.73m x 3.86m)

Fitted with a matching range of eye level units with worktop space over, breakfast bar, stainless steel sink unit with single drainer and mixer tap, integrated fridge and dishwasher, built-in electric oven, five ring gas hob with extractor hood over, window to rear, walk in bay window to front, part tiled flooring, fireplace, under floor heating, part vaulted ceiling.

Utility Room

8' 5" x 5' 7" (2.57m x 1.70m)

Base and eye level units with worktop space, 1+1/2 bowl stainless steel sink unit with single drainer and mixer tap, plumbing for washing machine, radiator, tiled flooring.

First Floor Landing

Window to front, radiator, access to loft space.

Bedroom 1

17' 9" x 11' 0" (5.41m x 3.35m)

Dormer window to front, radiator, double doors overlooking lounge, two built in wardrobes.

En-suite Shower Room

White suite comprising wash hand basin, recessed shower enclosure and low-level WC, tiled surround, radiator, tiled flooring.

Bedroom 2

12' 9" x 10' 7" (3.89m x 3.23m)

Window to rear, radiator, built in wardrobe.

Bedroom 3

12' 9" x 9' 10" (3.89m x 3.00m)

Window to front, radiator, built in wardrobe.

Bedroom 4

12' 4" x 7' 2" (3.76m x 2.18m)

Window to rear, radiator.

Bathroom

White suite comprising panelled bath with shower attachment over, pedestal wash hand basin and low-level wc, tiled splashbacks, window to front, radiator.

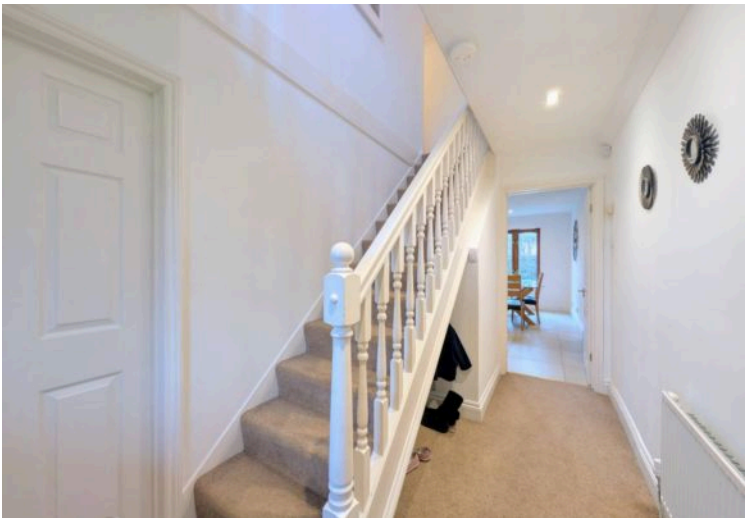
Bedroom 5/Mezzanine

14' 10" x 9' 2" (4.52m x 2.79m)

Overlooking sitting room, dormer window to front.

En-suite Shower Room

White suite comprising wash hand basin, double shower enclosure and low-level WC, tiled splashbacks, heated towel rail, tiled flooring, access to loft space.



Ground Floor



First Floor



This floor plan is for illustration purposes only.
Plan produced using Planity.

www.taylorwalsh.co.uk