



Varcoe Road, SE16

£315,000

Exclusively marketed for those who live or work in the London Borough of Southwark, do not own any other property and have a household income below the GLA Income Threshold (currently £90,000 per annum).

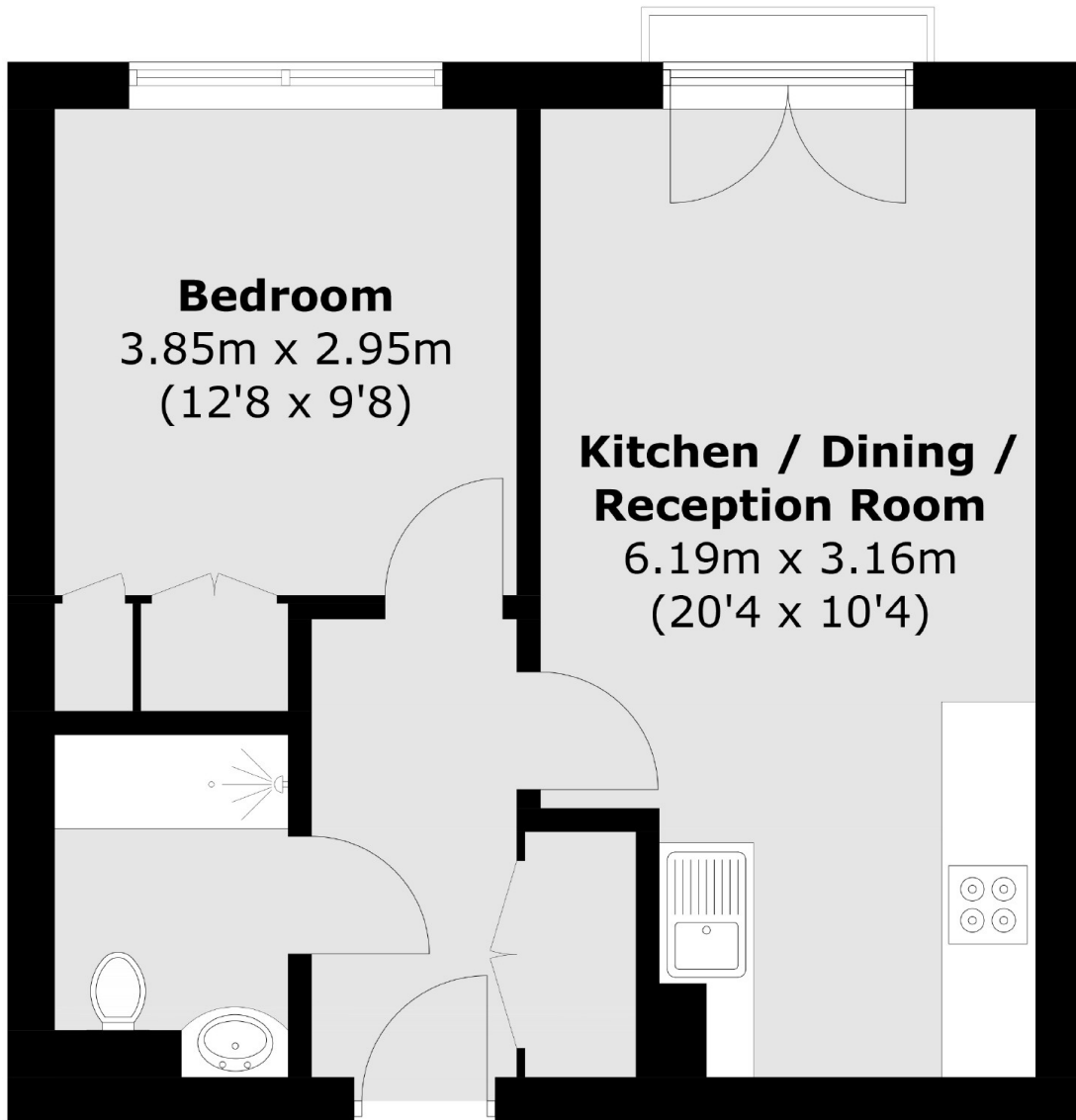
This modern built apartment is set within a popular development and boasting a central location offering spectacular West facing views of the Shard, St Pauls and City of London.

The location is perfect for those looking to enjoy the bars and restaurants of nearby Bermondsey Street, Borough, and Shad Thames. Further delights on your doorstep include the food markets of Maltby Street and Spa Terminus with a host of shops nearby, not forgetting the popular Bermondsey Beer Mile! The green spaces of Southwark and Burgess Park are both just a short distance away. Transport links are fantastic with South Bermondsey station conveniently placed nearby.

Features

- One Double Bedroom
- Stunning City Views
- Secure Development
- Two Roof Terraces
- Close To Local Shopping
- Amenities
- Contemporary Finish
- Communal Workspace Room

Varcoe Road, London, SE16



Total area (approx.): 38.9 sq. m (418.7 sq. ft)