



Queens Road, SE14

£450,000

Introducing this truly stunning, two double bedroom, Victorian conversion flat set on the highly sought-after Queens Road and within Telegraph Hill conservation area. Located on the first floor of this attractive building, as you enter you are greeted by a spacious entrance hall, good sized reception room with a lovely covered balcony and a separate modern fitted kitchen with Oak work surfaces.

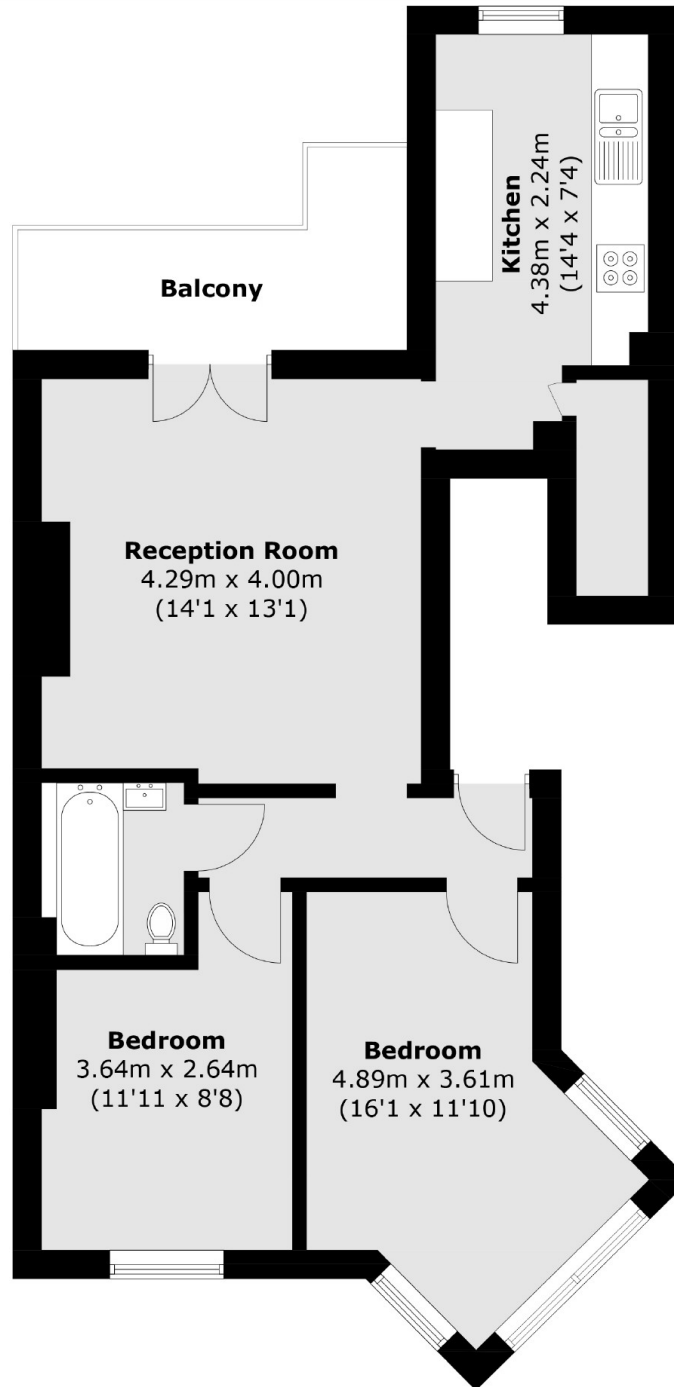
There are two good size, double bedrooms and a contemporary bathroom suite. The property is offered in very good condition, with beautiful wooden floor throughout and the current owners have also spent considerably on high quality window fittings throughout most of the property, including to the large feature bay in the main bedroom.

Erlanger House is located on the corner of two highly sought after roads, at the base of the Telegraph Hill Conservation area. New Cross Gate station is located only 7 minutes away allowing access to the City in less than 30 minutes. Queens Road Peckham station is only a couple minutes further. New Cross is famed for its education, with several good schools nearby including Haberdashers Hatcham, Edmund Waller Primary and Goldsmiths, University of London.

Features

- Two Double Bedrooms
- Modern Interior
- Upgraded Sash Windows
- Private Balcony
- Close To Transport
- Near Local Amenities

Queens Road,
London, SE14



First Floor

Total area (approx.): 56.2 sq. m (404.9 sq. ft)
Balcony: 6.1 sq. m (65.7 sq. ft)