



Pepys Road, SE14

£475,000

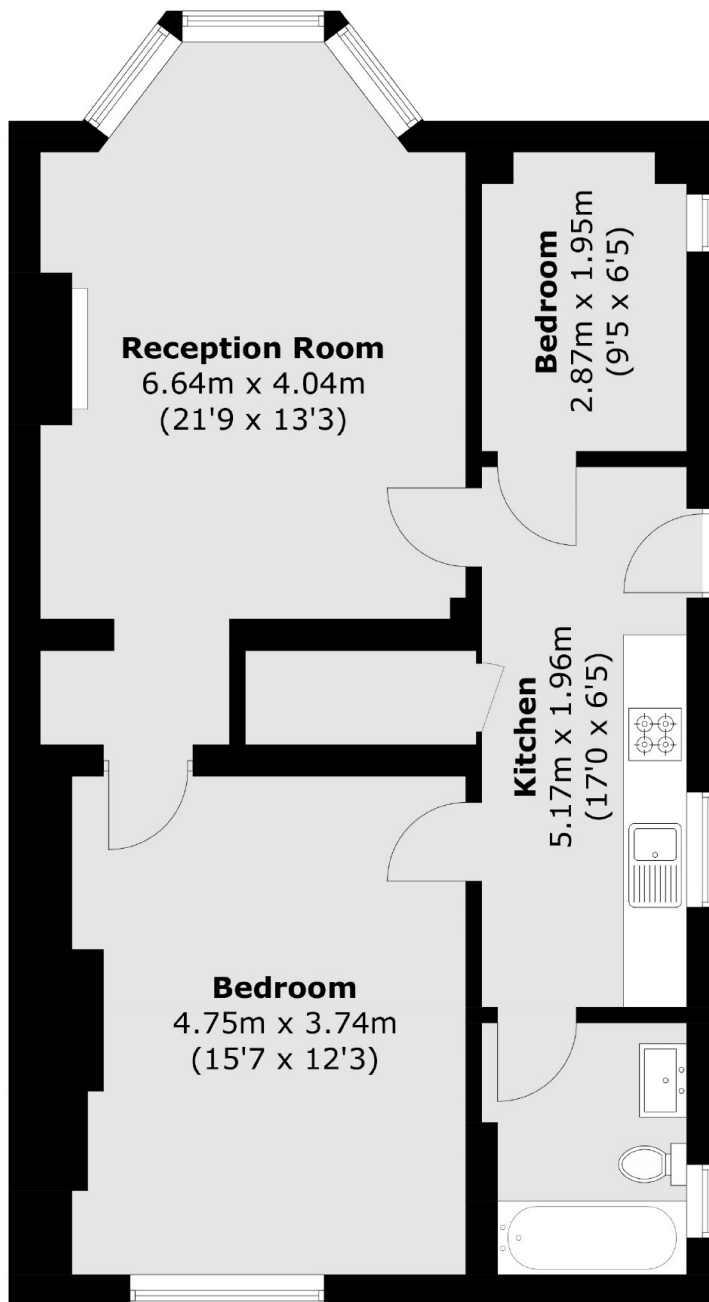
Delightful two double bedroom flat with access to a large/mature garden. The flat is offered in great condition throughout, and comes with a share of freehold.

Pepys Road is a sought after, tree-lined street perfectly positioned for New Cross Gate and Nunhead stations, all of which provide frequent rail connections into Central London. The open spaces of Telegraph Hill lower park can be found nearby.

Features

- Victorian Conversion
- Conservation Area
- Two Double Bedrooms
- Garden
- Separate Kitchen
- Excellent Transport Links

Pepys Road,
London, SE14



Total area (approx.): 66.7 sq. m (717.9 sq. ft)

Dexters

New Cross
256 New Cross Road
London
SE14 5PL
Sales
020 7313 3660

Energy Rating: C. We aim to make our particulars both accurate and reliable. However they are not guaranteed; nor do they form part of an offer or contract. If you require clarification on any points then please contact us, especially if you're traveling some distance to view. Please note that appliances and heating systems have not been tested and therefore no warranties can be given as to their good working order.

 **RICS** | Regulated
Estate Agent
and Letting Agent

dexters.co.uk