



Goodwood Road, SE14 £475,000

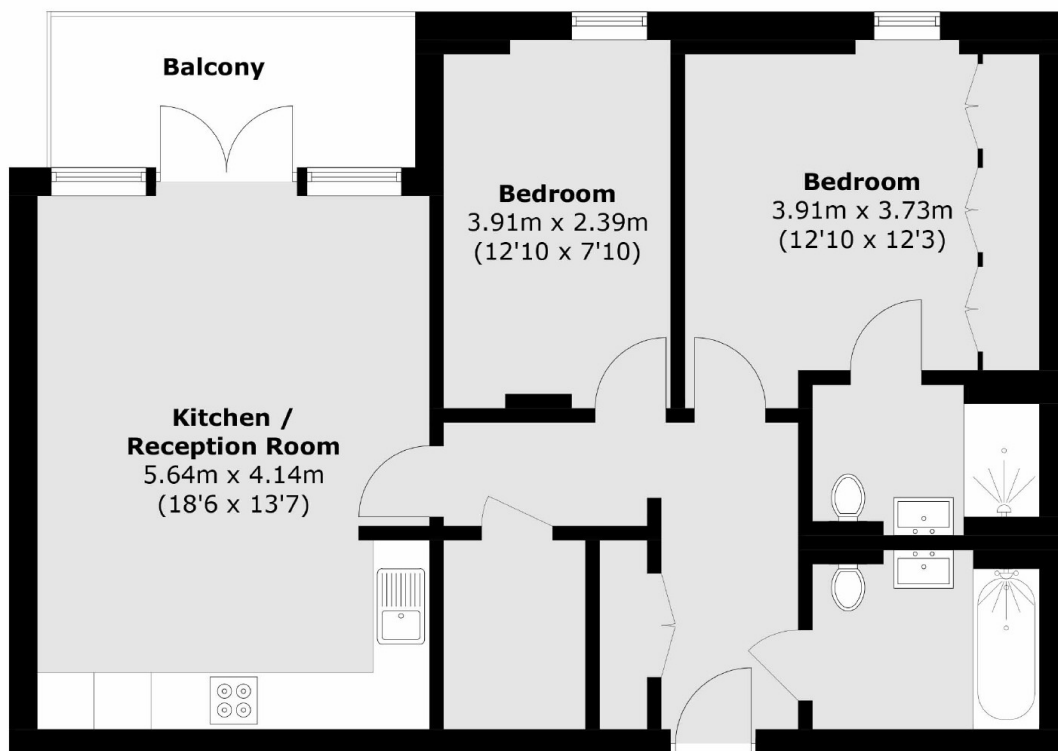
A two bedroom modern apartment in one of New Cross' most sought after developments. This superb property is one of the larger two bedrooms within the development, it is situated on the third floor, is particularly light and benefits from a west facing private balcony.

Goodwood Road is situated in the heart of New Cross with an abundance of bars, restaurants, and independent coffee shops on your doorstep. New Cross Gate, New Cross, Deptford and Deptford Bridge stations are all within easy access providing frequent rail links into Central London and the City.

Features

- New Build Development
- Excellent Location
- Beautifully Presented
- Two Double Bedrooms
- Two Bathrooms
- Private Balcony

Goodwood Road,
London, SE14



Total area (approx.): 70.6 sq. m (759.9 sq. ft)
Balcony area (approx.): 6.8 sq. m (73.2 sq. ft)