



Upper Brockley Road, SE4

£500,000

Bright and airy two bedroom Victorian conversion flat. The flat is offered in great condition throughout and is set within a charming period building with its own private outdoor space well positioned on a prime road in the Brockley Conservation area.

Features

- Victorian Conversion
- Two Bedrooms
- Conservation Area
- Private Patio
- Great Condition
- Long Lease



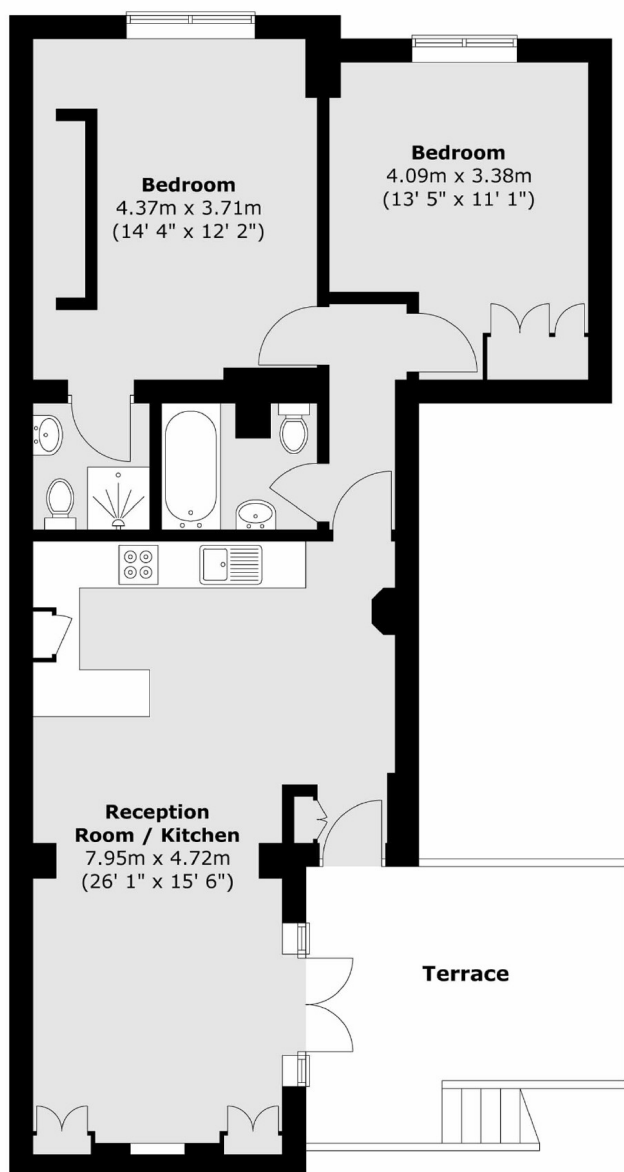
Upper Brockley Road, SE4

Upper Brockley Road is a sought after road in close proximity of Brockley train station, the amenities of Brockley Road and the open spaces of Telegraph Hill.



Upper Brockley Road, London, SE4

Lower Ground Floor



Total area (approx.) : 73.3 sq. m (789 sq. ft)
Total terrace area (approx.) : 14.4 sq. m (155 sq. ft)