



Moulding Lane, SE14

£350,000

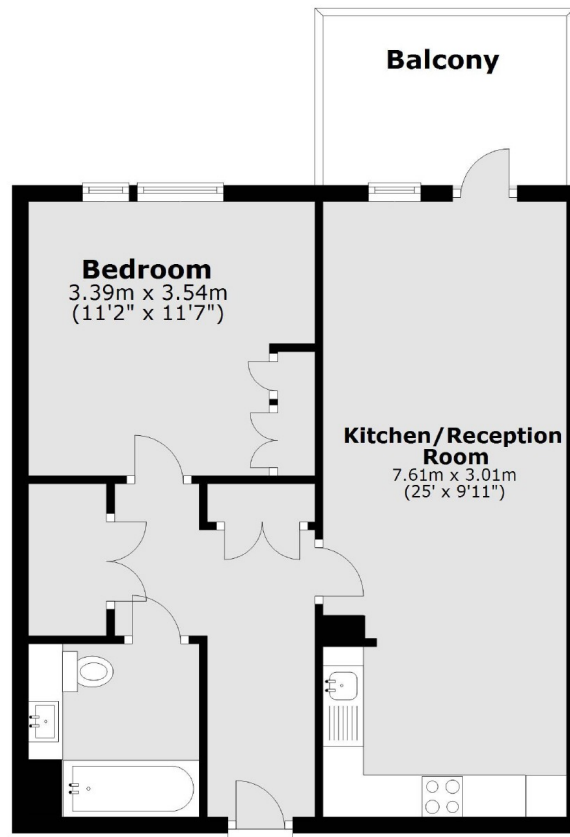
At over 538 Sq Ft this spacious one double bedroom apartment is ideal for someone looking for the luxurious lifestyle in a prime residential location. Situated on the Fourth floor, the property is presented in immaculate condition, is naturally bright and comprises large open plan kitchen/reception with private balcony and double bedroom with a stylish bathroom/wc.

Alloy House is located 0.5 miles from Deptford station and 0.5 miles from New Cross station, offering fantastic transport links to all of London. A wide range of shops, cafés, delis and restaurants are on the doorstep.

Features

- New Build Development
- Open Plan Kitchen/Reception
- Double Bedroom
- Stylish Open Plan Kitchen
- Private Balcony
- Chain Free

Moulding Lane, London, SE14



Main area: Approx. 50.6 sq. metres (544.7 sq. feet)
Plus balconies, approx. 6.6 sq. metres (71.0 sq. feet)

Dexters

New Cross
256 New Cross Road
London
SE14 5PL
Sales
020 7313 3660

Energy Rating: B. We aim to make our particulars both accurate and reliable. However they are not guaranteed; nor do they form part of an offer or contract. If you require clarification on any points then please contact us, especially if you're traveling some distance to view. Please note that appliances and heating systems have not been tested and therefore no warranties can be given as to their good working order.

 **RICS** | Regulated
Estate Agent
and Letting Agent

[dexters.co.uk](https://www.dexters.co.uk)