



Pepys Road, SE14

£400,000

NO CHAIN. Positioned on one of Telegraph Hill's most desirable streets, this spacious two-bedroom top floor flat occupies the upper level of a striking Victorian villa on tree-lined Pepys Road. Bursting with character and period charm, the property offers an exciting opportunity for buyers looking to modernise and create a truly special home.

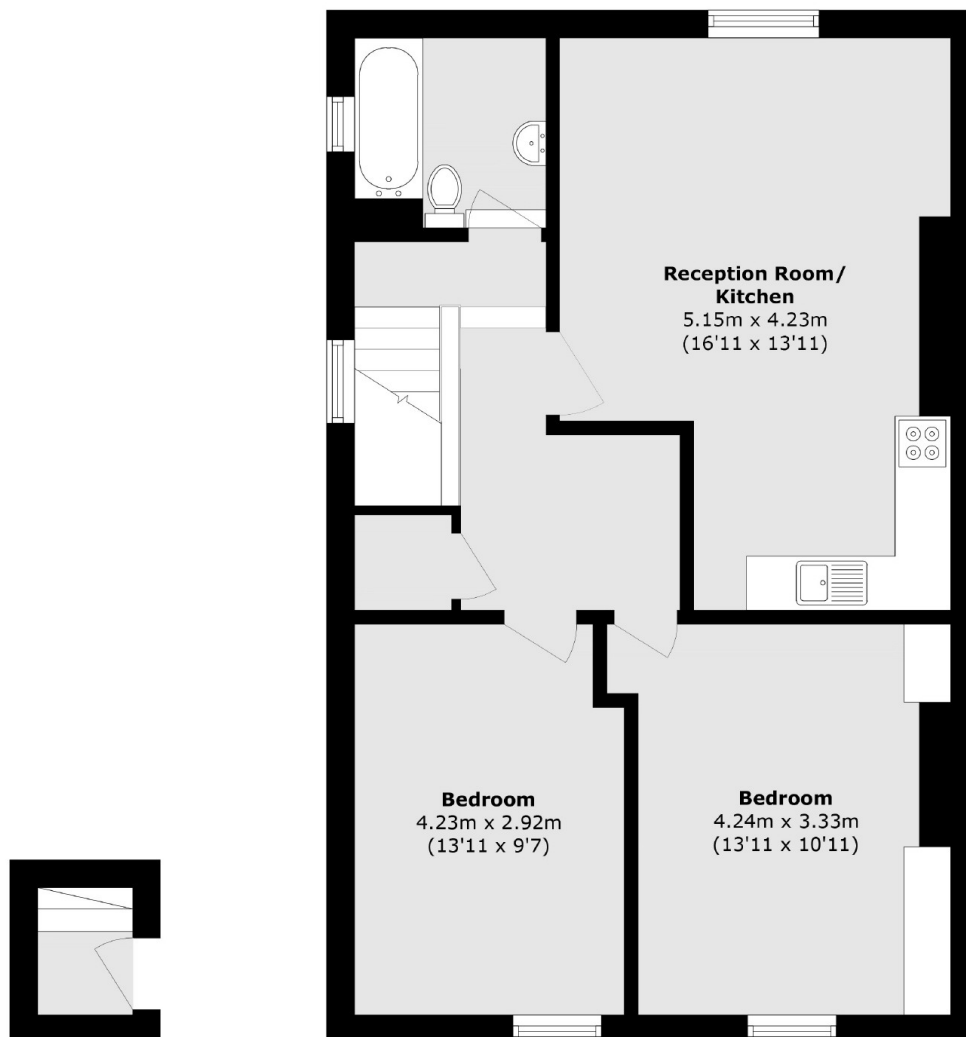
Set within a handsome, semi-detached building, the flat enjoys elevated views and an abundance of natural light throughout. The layout comprises two well-proportioned bedrooms, a generous open plan kitchen and reception space, and a bathroom, all offering excellent scope for reconfiguration or cosmetic improvement. Sash windows, and original features hint at the property's grandeur, while its top floor position ensures peace, privacy, and lovely rooftop vistas over SE14. There is also access to a garden, which is shared between all residents.

Conveniently located just a short walk from both New Cross Gate and Queens Road Peckham stations, with direct links to London Bridge, the Overground, and the City, the property is well-connected for commuters. The area boasts a vibrant mix of local amenities, including independent cafés, restaurants, and galleries, with Telegraph Hill Park and Goldsmiths University nearby.

Features

- Two Bedroom Apartment With Garden
- Top Floor
- Victorian Villa Conversion
- In Need Of Minor Modernisation
- Telegraph Hill Conservation Area
- Close To Transport Links

Pepys Road, London, SE14



First Floor

Second Floor

Total area (approx.): 69.6 sq. m (749.1 sq. ft)

Dexters

New Cross
256 New Cross Road
London
SE14 5PL
Sales
020 7313 3660

Energy Rating: D. We aim to make our particulars both accurate and reliable. However they are not guaranteed; nor do they form part of an offer or contract. If you require clarification on any points then please contact us, especially if you're traveling some distance to view. Please note that appliances and heating systems have not been tested and therefore no warranties can be given as to their good working order.

 **RICS** | Regulated
Estate Agent
and Letting Agent

[dexters.co.uk](https://www.dexters.co.uk)