



Goodwood Road, SE14

£1,850 Per week

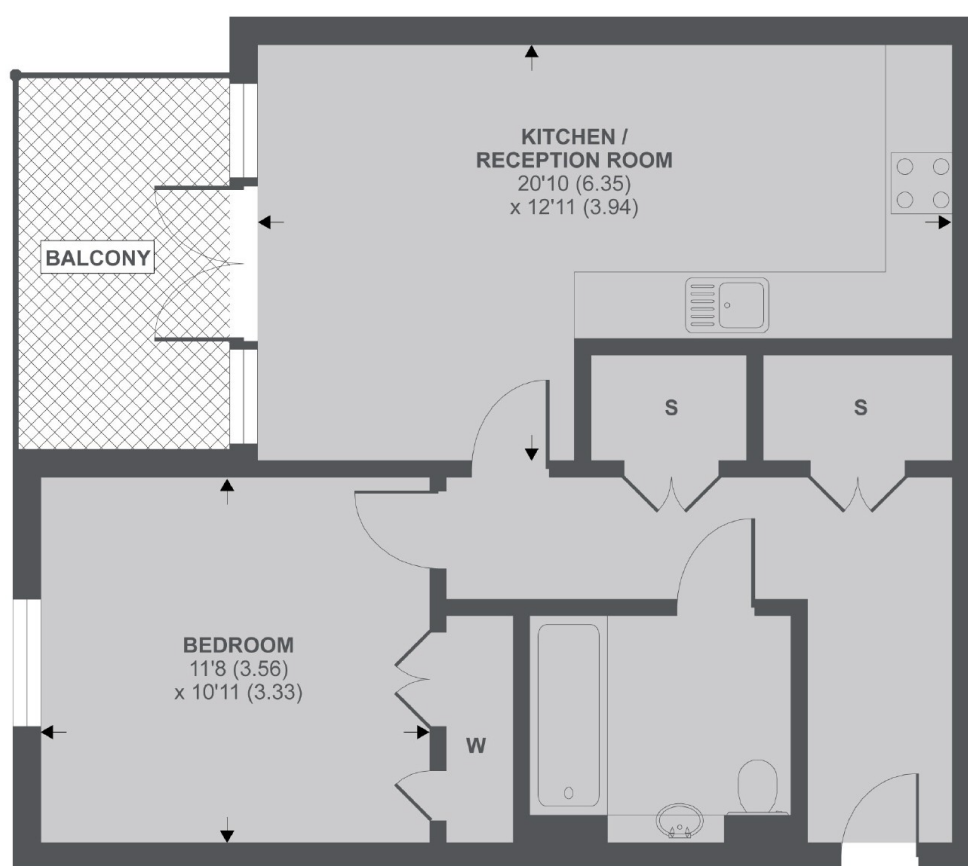
Situated within this new build development, this light and airy one double bedroom apartment boasts a large open plan kitchen living room, private balcony, ample storage and bicycle storage.

Bond House is located only 0.1 miles from New Cross Station offering fantastic transport links to all of London and is surrounded by shops, restaurants and cafés.

Features

- One Double Bedrooms
- Family Bathroom
- Private Balcony
- New Cross Station
- New Build

Goodwood Road, London, SE14



4th Floor

APPROX FLOOR AREA 573 SQ.FT 53.2 SQ.M

Copyright nichecom.co.uk 2019 REF : 535768

Dexters

New Cross
256 New Cross Road
London
SE14 5PL
Lettings
020 7313 3661

Energy Rating: B. We aim to make our particulars both accurate and reliable. However they are not guaranteed; nor do they form part of an offer or contract. If you require clarification on any points then please contact us, especially if you're traveling some distance to view. Please note that appliances and heating systems have not been tested and therefore no warranties can be given as to their good working order.

 **RICS** | Regulated
Estate Agent
and Letting Agent

dexters.co.uk