



Hatcham Park Mews, SE14
£825,000

Dexters



Hatcham Park Mews, SE14

Tucked away in the highly sought-after Hatcham Park Mews, this immaculate three-bedroom townhouse offers the perfect blend of stylish modern living and peaceful mews-style privacy, right in the heart of New Cross.

Spread across three spacious floors, the home is presented in pristine condition throughout. The bright and welcoming ground floor features a generous open-plan kitchen, dining, and reception area, finished with contemporary fittings, wood flooring, and large stable style, glass paned doors that flood the space with natural light. The sleek, fully integrated kitchen boasts ample storage and worktop space, ideal for both everyday living and entertaining. There is a lovely rear garden which is the perfect oasis for socialising with friends or just relaxing in peace, as well as a small patio area to the front.

Upstairs, you'll find two well-proportioned double bedrooms to the first floor with one bedroom benefitting from a Juliette balcony, as well as modern family bathroom. To the second floor, there is a further principal suite with fitted wardrobes and a stylish en-suite bathroom, complementing the home's elegant, move-in-ready aesthetic. Hatcham Park Mews is a secure gated development, and this home has the added bonus of private parking for up to two vehicles.

Features

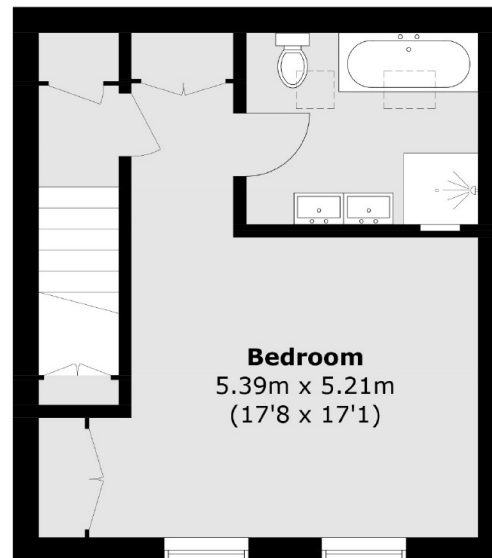
- Three Bedroom Home
- Mews Townhouse
- Secure, Gated Development
- Private Parking
- Close To Transport
- Chain Free



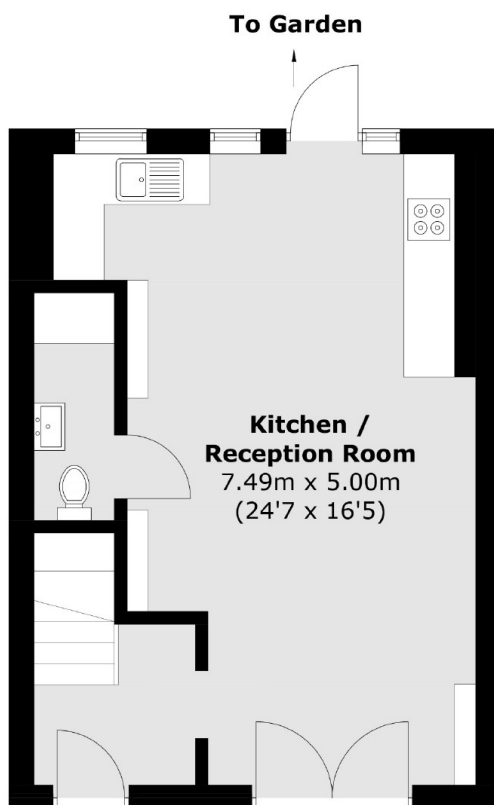




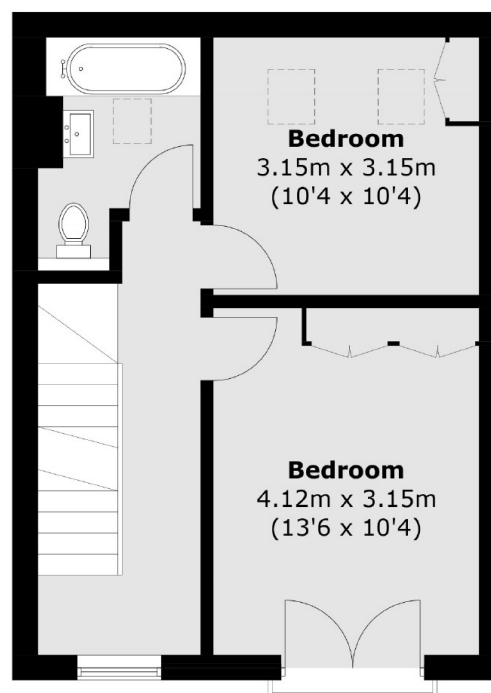
Hatcham Park Mews, London, SE14



Second Floor



Ground Floor



First Floor

Total area (approx.): 109.5 sq. m (1,178.6 sq. ft)