



Waller Road, SE14

£450,000

Occupying the ground and lower floors of a handsome Victorian terrace on the sought-after Waller Road, this two-bedroom apartment offers a perfect blend of period charm and contemporary living, complete with access to a private section of a well-maintained rear garden.

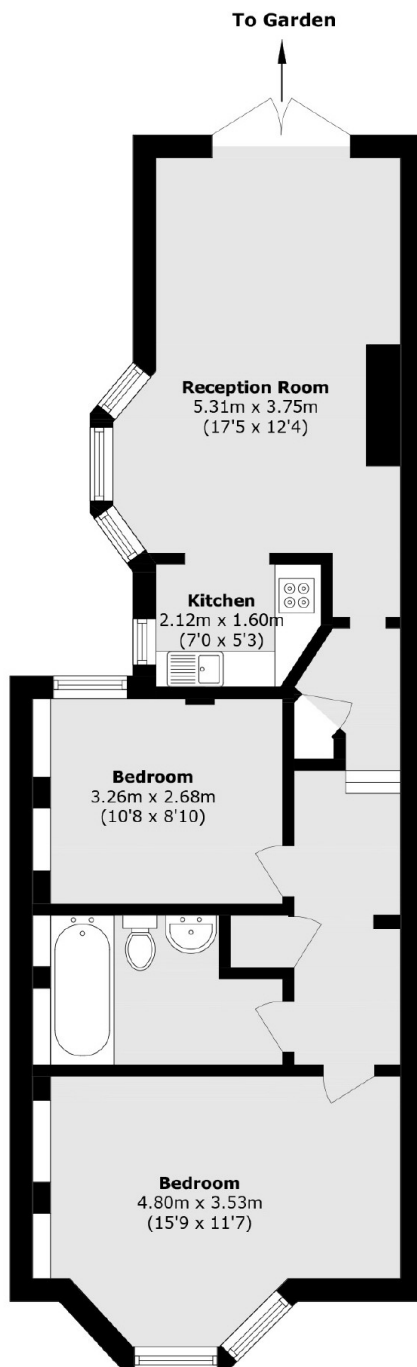
The property boasts a spacious and light-filled reception room with high ceilings, bay windows with sash windows, creating a character-rich yet modern living space. A well-appointed kitchen with ample storage and integrated appliances sits just off the main living area, ideal for both entertaining and everyday use. Both bedrooms are generously sized, making this property perfect for a young couple or friends, as well as a family bathroom. At the rear, enjoy direct access to a private section of a charming garden, a rare and coveted feature in this location, perfect for relaxing, entertaining, or gardening.

Located on a quiet, tree-lined street within the Telegraph Hill Conservation Area, the apartment is moments from Telegraph Hill Park and just a short walk to Queens Road Peckham and New Cross Gate stations, offering excellent links into London Bridge and the City. An array of local cafés, shops, and weekly farmers' markets add to the area's vibrant community feel.

Features

- Two Double Bedrooms
- Arranged Over Two Floors
- Rear Garden
- Telegraph Hill Conservation Area
- Close To Public Transport
- Victorian Conversion

Waller Road, London, SE14



Total area (approx.): 61.1 sq. m (657.6 sq. ft)

Dexters

New Cross
256 New Cross Road
London
SE14 5PL
Sales
020 7313 3660

Energy Rating: C. We aim to make our particulars both accurate and reliable. However they are not guaranteed; nor do they form part of an offer or contract. If you require clarification on any points then please contact us, especially if you're traveling some distance to view. Please note that appliances and heating systems have not been tested and therefore no warranties can be given as to their good working order.

 **RICS** | Regulated
Estate Agent
and Letting Agent

dexters.co.uk