



Edric Road, SE14

£925,000

Nestled in the heart of the prestigious Hatcham Conservation Area, this stunning three-bedroom Victorian home has been thoughtfully extended to offer a larger and more adaptable living space than is typically available in the neighbourhood.

From the moment you enter, the home's period charm is unmistakable. The welcoming hallway showcases original ceiling cornicing, a subtle yet striking nod to its Victorian heritage. To the left, the lounge and dining rooms have been opened up to form a spacious, light-filled through-room. Retaining the original double doors, the layout also allows for the option to create two distinct spaces as needed.

Features

Offers In Excess Of £925,000
Three Double Bedrooms
Fully Renovated
Tasteful Blend Of Period and
New Features
Front and Back Garden
Hatcham Park Conservation
Area



Edric Road, SE14

Just a few steps down, you'll find a convenient shower room, followed by the heart of the home, the kitchen. The side return has been cleverly extended, featuring roof windows along the entire length, bathing the space in natural light. The original internal window from the dining room has been retained to ensure light continues to flow seamlessly throughout. The kitchen boasts an island, with high end integrated appliances, and access to the garden via bifold doors. The extended area is currently arranged as a combined kitchen, office, and informal lounge, making it perfect for modern family living or entertaining.

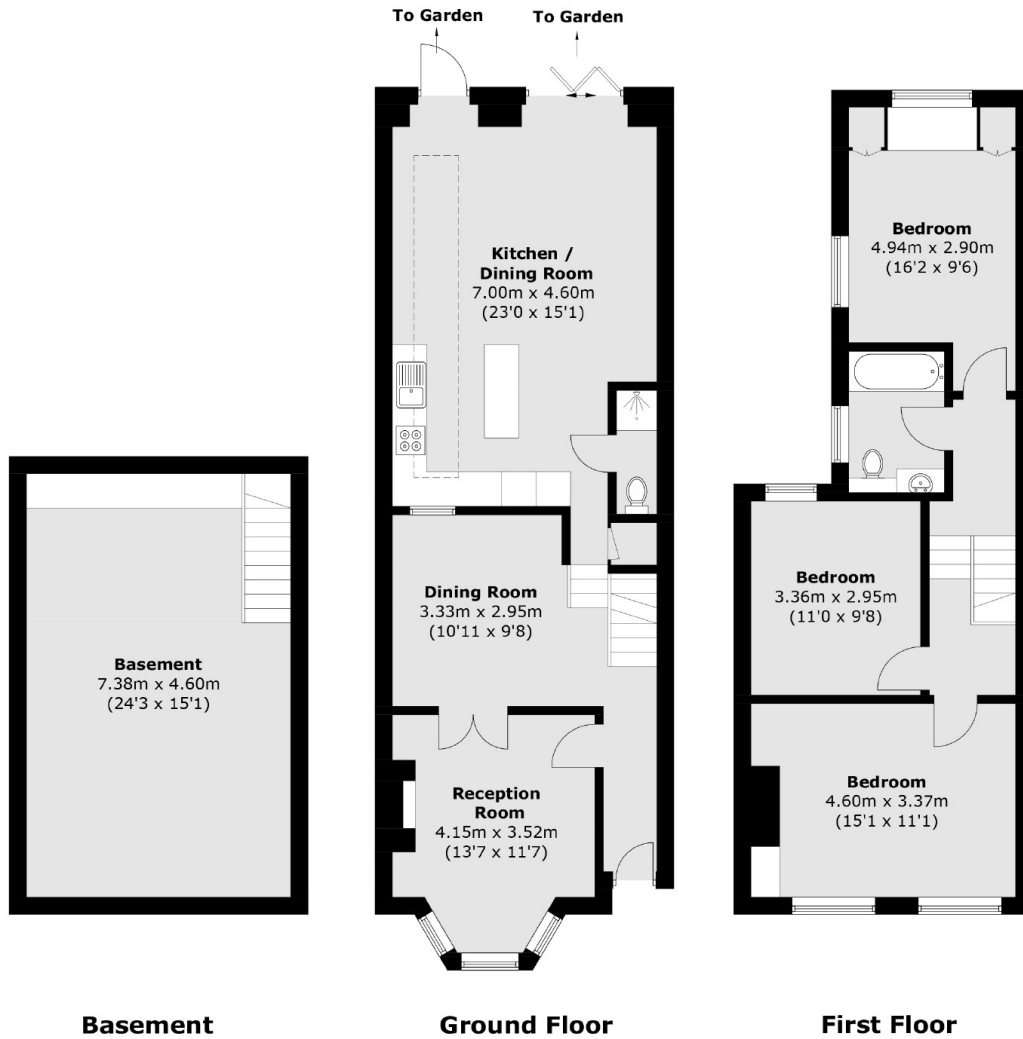
In addition, the converted basement provides a practical and spacious utility room.

Upstairs, you'll find three generously sized double bedrooms and a beautifully appointed family bathroom.

This home offers a rare blend of period features, modern enhancements, and exceptional use of space, ideal for those looking for something truly special in the area.



Edric Road, London, SE14



Total area (approx.): 150.1 sq. m (1,615.5 sq. ft)
(Including Basement)