



Joseph Hardcastle Close, SE14

£2,800 Per calendar month

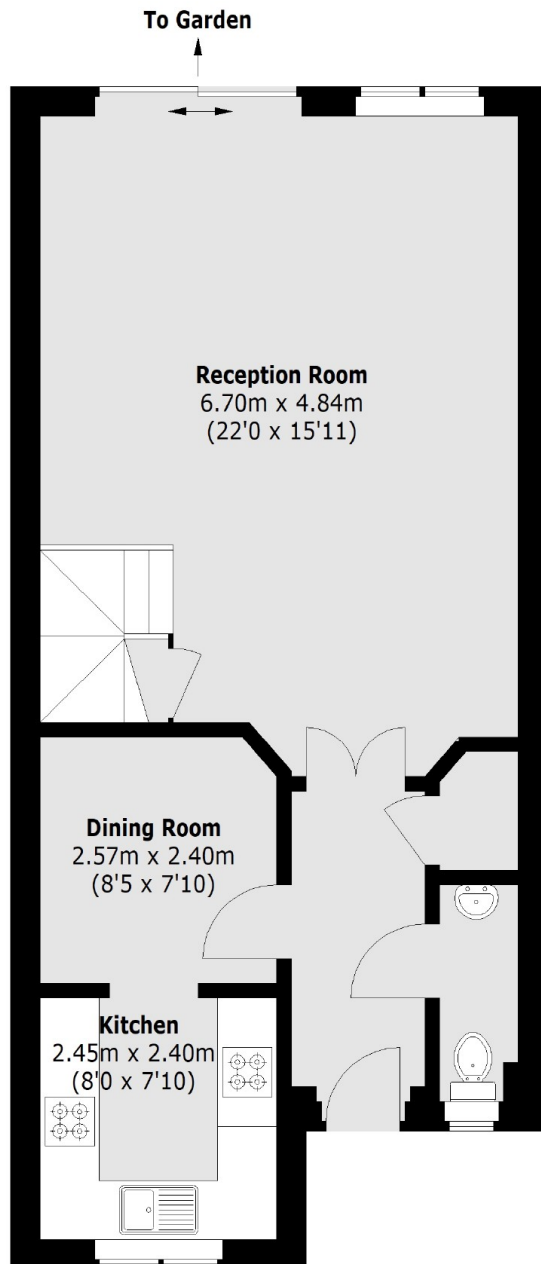
A three double bedroom house including modern features throughout, two bathrooms and a private rear garden.

Joseph Hardcastle Close is located 0.5 miles from New Cross Gate station offering excellent transport links to London Bridge, Canary Wharf and the East London line. The development is also surrounded by shops, cafés and restaurants.

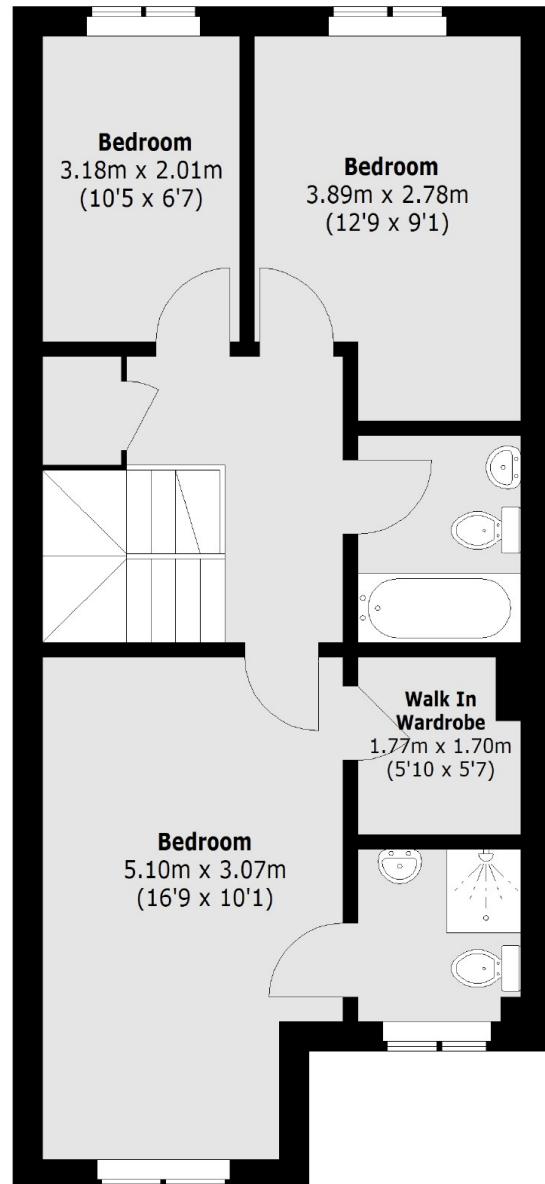
Features

Purpose Built House
Three Double Bedrooms
Two Bathrooms
Close To Station
Private Garden
Furnished

Joseph Hardcastle Close, London, SE14



Ground Floor



First Floor

Total area (approx.): 104.4 sq. m (1123.7 Sq. ft)