



Musgrove Road, SE14

£3,400 Per calendar month

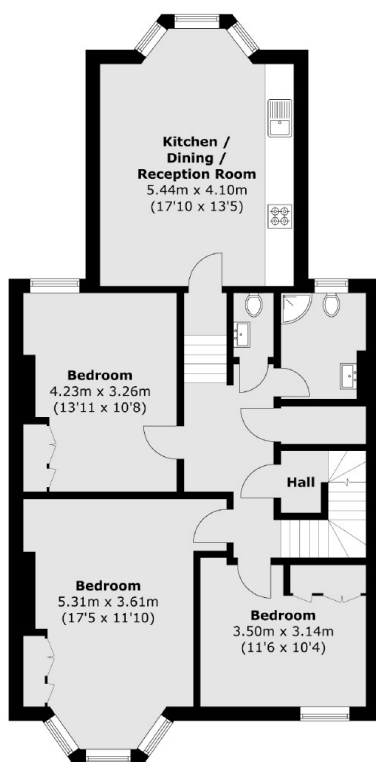
A four double bedroom first floor Victorian conversion apartment. Finished to a good decorative order throughout, modern features and two bathrooms.

Musgrove Road is located in the sought after Telegraph Hill Conservation area, close to Telegraph Hill Park, ideally located with excellent transport links including Brockley, Nunhead & New Cross stations, popular gastro pubs and cafés.

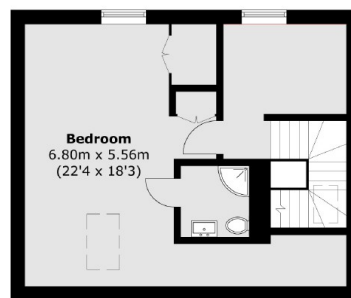
Features

Telegraph Hill
First Floor Apartment
Four Double Bedrooms
Two Bathrooms
Good Decorative Order
Unfurnished

Musgrove Road, , SE14



First Floor



Second Floor

Total area (approx.): 123.6 sq. m (1330.4sq. ft)