



Malpas Road, SE4

£925,000

Contemporary three bedroom townhouse overlooking Luxmore Gardens SE4.

Situated within a peaceful, gated development with uninterrupted views over Luxmore Gardens, this luxurious three bedroom, three storey modern home offers exceptional design, energy-efficient living, and outstanding access to the vibrant heart of Brockley.

Located moments from Brockley, New Cross and St Johns stations (Zone 2) and within easy reach of boutique cafés, bars, and galleries, this rare modern home offers both tranquility and connectivity in one of South East London's most desirable neighbourhoods. Goldsmiths, University of London is a short walk away.

Features

Three Bedrooms, Three
Bathrooms
Close To Several Stations
Peaceful Views Over Luxmore
Gardens
Modern Build Home
Energy Efficient - 'B' Rated
1339 Sq Ft



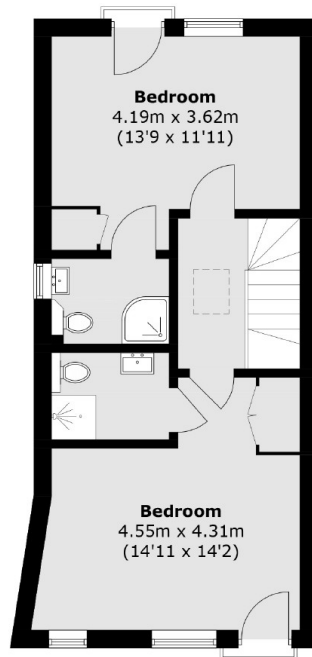
Malpas Road, SE4

Built in 2018, the property combines striking contemporary architecture with thoughtful interiors across three spacious levels. The ground floor features a bright open-plan kitchen and dining space with high-spec appliances, sleek cabinetry, and patio doors opening onto a private garden perfect for entertaining or quiet relaxation.

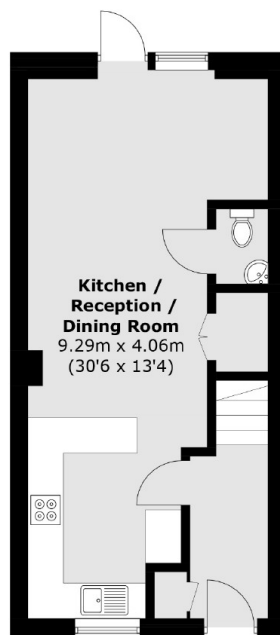
The first floor hosts a spacious reception room with floor-to-ceiling windows framing green park views, alongside the first of three generously sized bedrooms and the family bathroom. Upstairs, two further bedrooms, both of which feature en-suites and built-in storage. Energy-efficient and low maintenance, the home also benefits from underfloor heating on the ground floor, double glazing, and high-quality finishes throughout. Secure gated access further enhances the appeal.



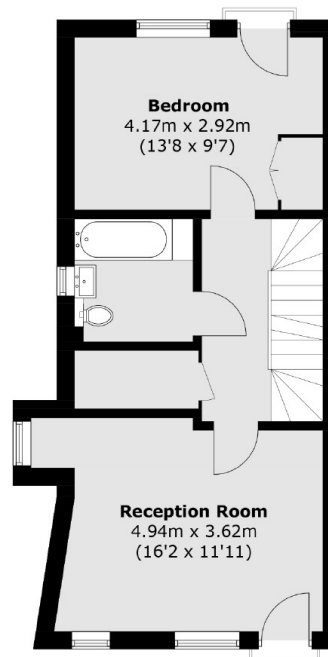
Malpas Road, London, SE4



Second Floor



Ground Floor



First Floor

Total area (approx.): 124.4 sq. m (1,339.0 sq. ft)