



Manor Avenue, SE4

£550,000

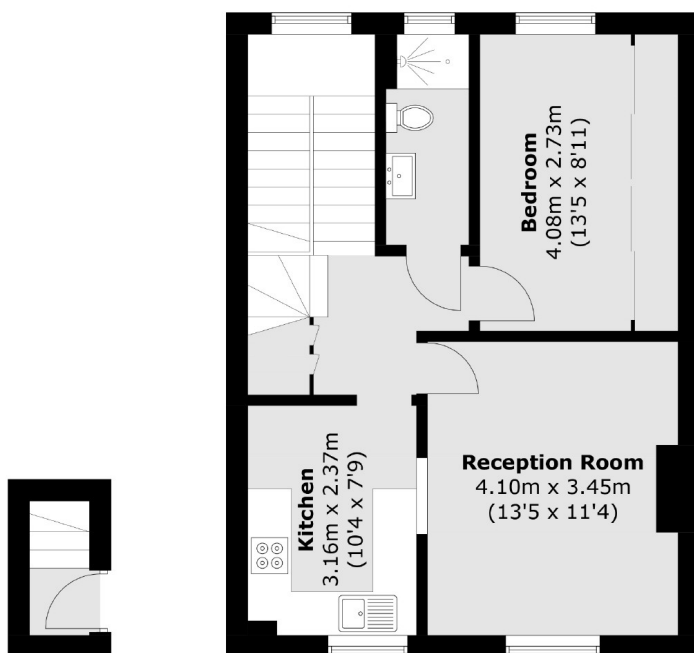
Beautiful two bedroom, split level Victorian conversion apartment on one of the best roads in Brockley Conservation Area. This fantastic property boasts natural light providing an airy feel throughout, with the stunning 300 Sq Ft primary bedroom benefitting from the morning sun, in addition to the reception room and kitchen absorbing the evening sun.

Manor Avenue is one of the best tree lined roads in the Conservation Area and is close to various schools, including Haberdashers Hatcham Free School and John Stainer Primary Schools, Haberdashers Hatcham College and the famous Goldsmiths, University Of London. Multiple stations are nearby, including Brockley Overground and St Johns Mainline.

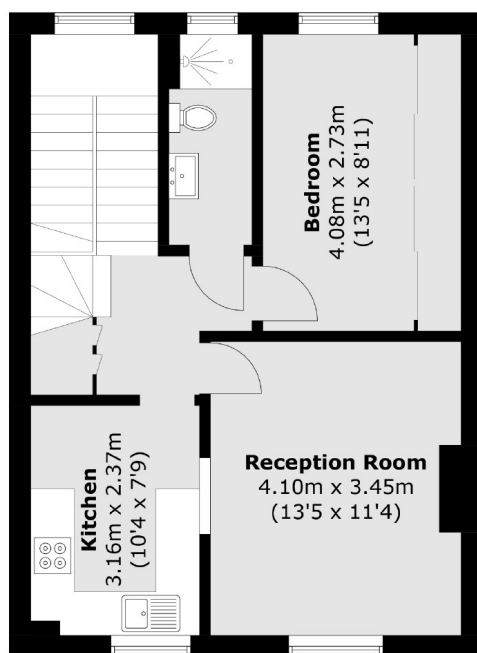
Features

- Two Bedrooms
- Victorian Conversion
- Share of Freehold
- Split Level
- Brockley Conservation Area

Manor Avenue, London, SE4

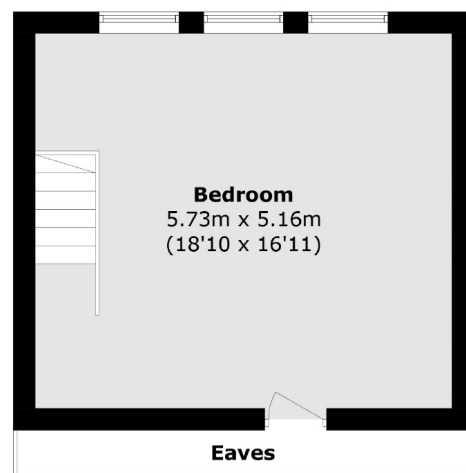


First Floor



Second Floor

Total area (approx.): 80.2 sq. m (863.1 sq. ft)
(Excluding Eaves)



Third Floor