



## Brocklehurst Street, SE14

£650,000

Spacious three bedroom Victorian terraced home located within the highly sought after Hatcham Conservation area. Boasting a large double reception as well as a kitchen diner, this family home has scope for improvement with many neighbours having undertaken side return extensions (subject to relevant consent). There are also three double bedrooms, upstairs family bathroom as well as a downstairs WC and shower. The house has the added benefit of a large cellar.

### Features

- Three Bedrooms
- Victorian Terrace Home
- Close To Transport
- Cellar
- Scope For Improvements
- Good Schools Nearby



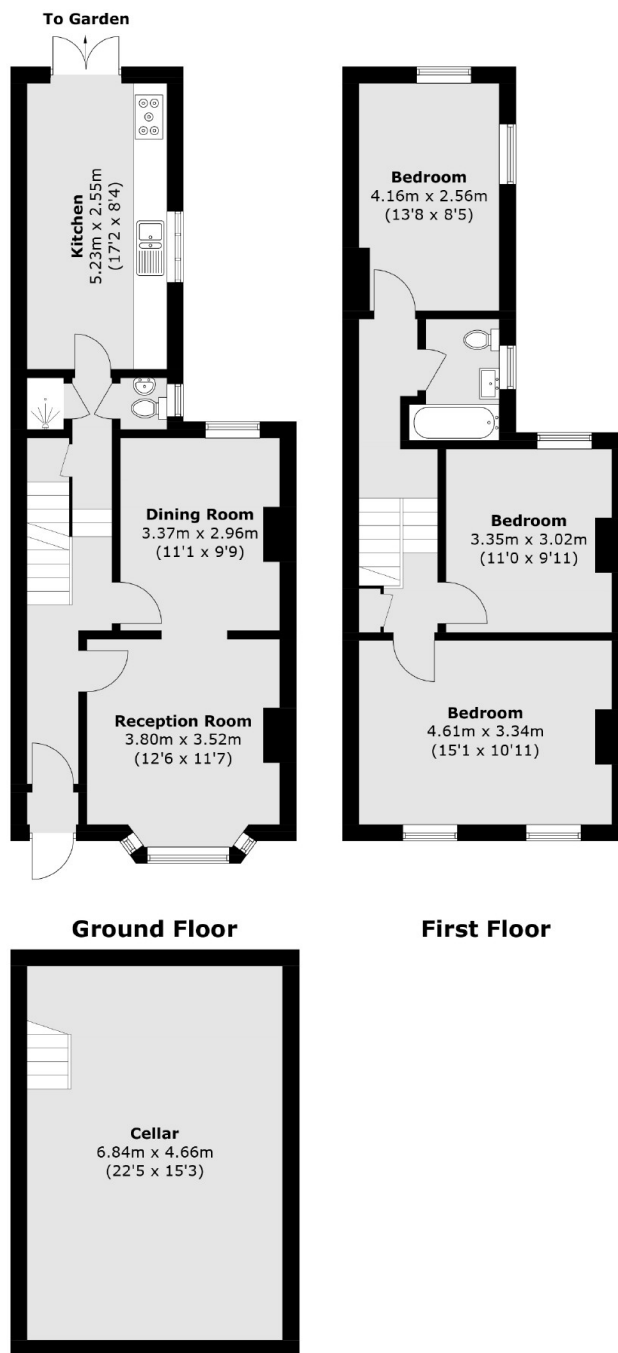
## Brocklehurst Street, SE14

Brocklehurst Street is ideally located within Hatcham Conservation Area and just a short distance from New Cross Gate station, providing access in to Central London within 15 minutes. Goldsmiths, University of London is also nearby, as well as multiple schools including the highly sought after Haberdashers Hatcham Primary School and Haberdashers Hatcham College.





# Brocklehurst Street, London, SE14



**Basement Floor**

Total area (approx.): 130.8 sq. m (1,407.9 sq. ft)  
(Including Basement)