



## Brocklehurst Street, SE14

### £700,000

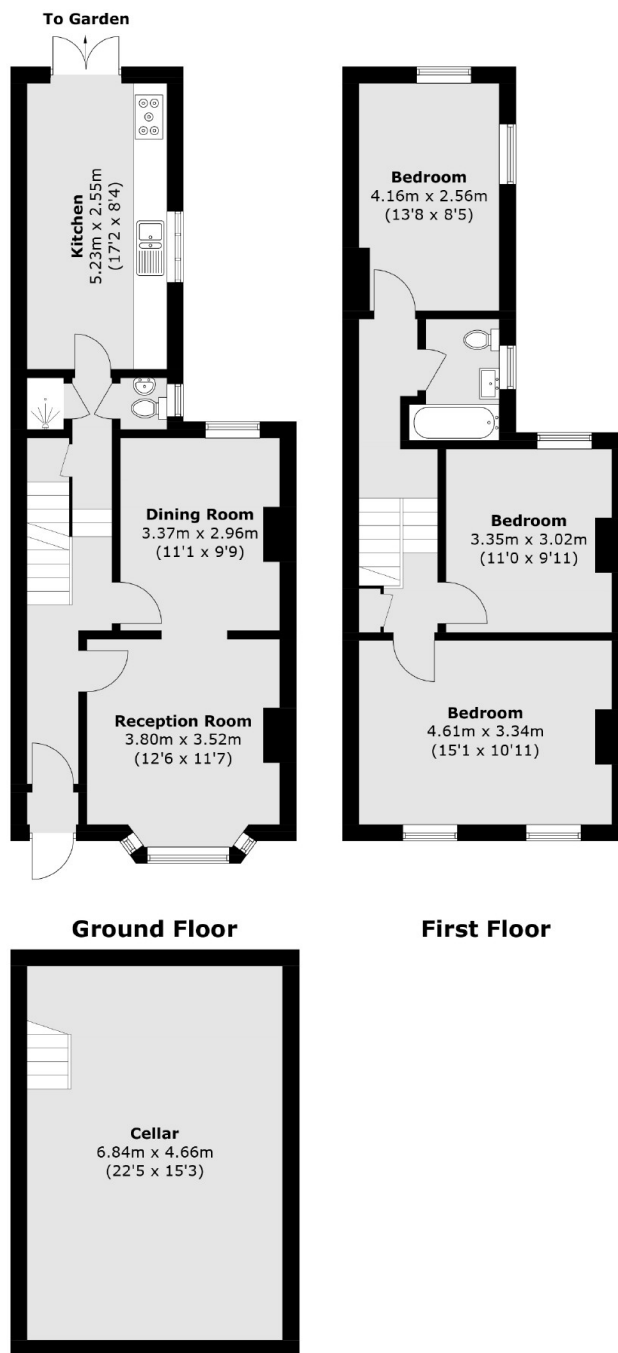
Spacious three bedroom Victorian terraced home located within the highly sought after Hatcham Conservation area. Boasting a large double reception as well as a kitchen diner, this family home has scope for improvement with many neighbours having undertaken side return extensions (subject to relevant consent). There are also three double bedrooms, upstairs family bathroom as well as a downstairs WC and shower. The house has the added benefit of a large cellar.

Brocklehurst Street is ideally located within Hatcham Conservation Area and just a short distance from New Cross Gate station, providing access in to Central London within 15 minutes. Goldsmiths, University of London is also nearby, as well as multiple schools including the highly sought after Haberdashers Hatcham Primary School and Haberdashers Hatcham College.

### Features

- Three Bedrooms
- Victorian Terrace Home
- Close To Transport
- Cellar
- Scope For Improvements
- Good Schools Nearby

# Brocklehurst Street, London, SE14



**Basement Floor**

Total area (approx.): 130.8 sq. m (1,407.9 sq. ft)  
(Including Basement)

**Dexters**

New Cross  
256 New Cross Road  
London  
SE14 5PL  
Sales  
020 7313 3660

Energy Rating: D. We aim to make our particulars both accurate and reliable. However they are not guaranteed; nor do they form part of an offer or contract. If you require clarification on any points then please contact us, especially if you're traveling some distance to view. Please note that appliances and heating systems have not been tested and therefore no warranties can be given as to their good working order.

 **RICS** | Regulated  
Estate Agent  
and Letting Agent

dexters.co.uk