



## St. Donatts Road, SE14

### £400,000

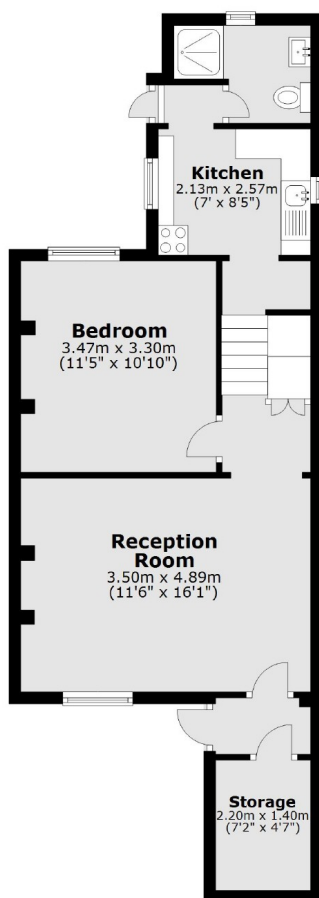
Superb one bedroom garden flat with its own private entrance, located on a quiet tree lined street close to New Cross. Having been refurbished to a good standard, there is a large lounge, with separate kitchen which is finished to a good specification, as well as a large double bedroom. The property also has a lapsed planning application approval for a ground floor extension, allowing to turn the property in to a two bedroom apartment as well as the creation of a large open plan kitchen, reception and dining space. Planning Ref: DC/22/124998

St. Donatts Road is ideally located within a few minutes walk of New Cross mainline and Overground station. Goldsmiths University of London is a short distance away.

### Features

- Garden Flat
- One Bedroom
- Lapsed Planning Consent (Ref DC/22/124998)
- 550 Sq Ft
- Close To Transport
- Quiet Location

# St. Donatts Road, London, SE14



Total area: approx. 50.9 sq. metres (547.7 sq. feet)