



St. Donatts Road, SE14

£450,000

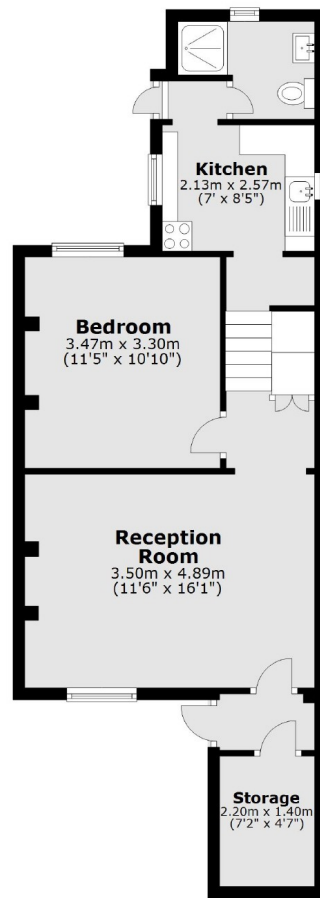
Superb one bedroom garden flat with its own private entrance, located on a quiet tree lined street close to New Cross. Having been refurbished to a good standard, there is a large lounge, with separate kitchen which is finished to a good specification, as well as a large double bedroom. The property also has a lapsed planning application approval for a ground floor extension, allowing to turn the property in to a two bedroom apartment as well as the creation of a large open plan kitchen, reception and dining space. Planning Ref: DC/22/124998

St. Donatts Road is ideally located within a few minutes walk of New Cross mainline and Overground station. Goldsmiths University of London is a short distance away.

Features

- Garden Flat
- One Bedroom
- Lapsed Planning Consent (Ref DC/22/124998)
- 550 Sq Ft
- Close To Transport
- Quiet Location

St. Donatts Road,
London, SE14



Total area: approx. 50.9 sq. metres (547.7 sq. feet)

Dexters

New Cross
256 New Cross Road
London
SE14 5PL
Sales
020 7313 3660

Energy Rating: D. We aim to make our particulars both accurate and reliable. However they are not guaranteed; nor do they form part of an offer or contract. If you require clarification on any points then please contact us, especially if you're traveling some distance to view. Please note that appliances and heating systems have not been tested and therefore no warranties can be given as to their good working order.



[dexters.co.uk](https://www.dexters.co.uk)