



Rotherhithe New Road, SE16

£2,350 PCM

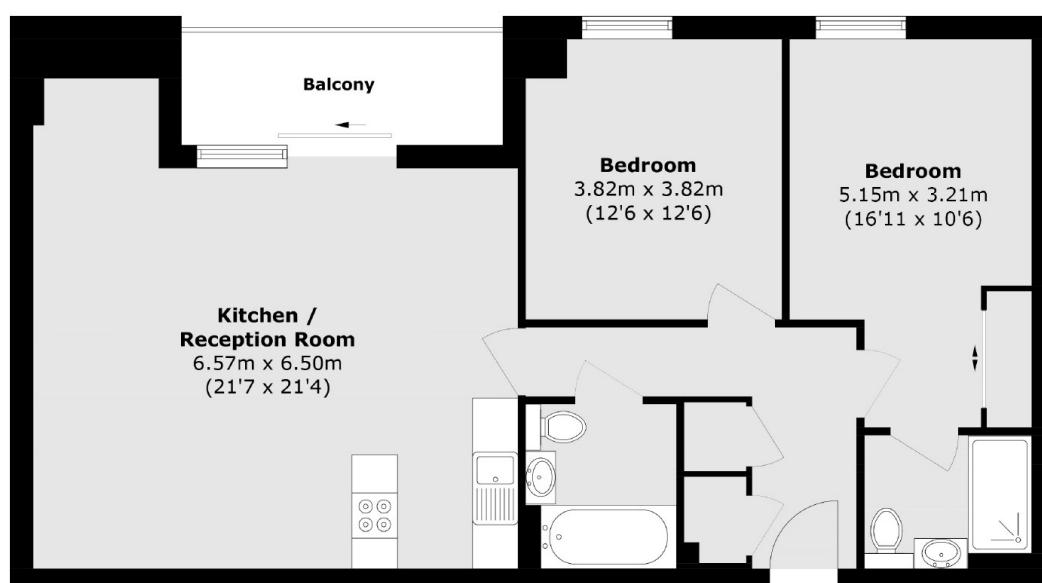
A spacious two bedroom, two bathroom apartment with private balcony situated in the heart of Rotherhithe.

Chancellor House is located near South Bermondsey mainline station.

Features

- Two Bedroom Apartment
- Two Bath/Shower Rooms
- Living/Kitchen/Dining
- Private Balcony
- Concierge and Gym
- Communal Roof Terrace

Rotherhithe New Road, London, SE16



Total area (approx.): 84.6 sq. m (921.3 sq. ft)

Balcony area (approx.): 6.6 sq. m (71.0 sq. ft)