

Barlbrough Street, SE14

£450,000

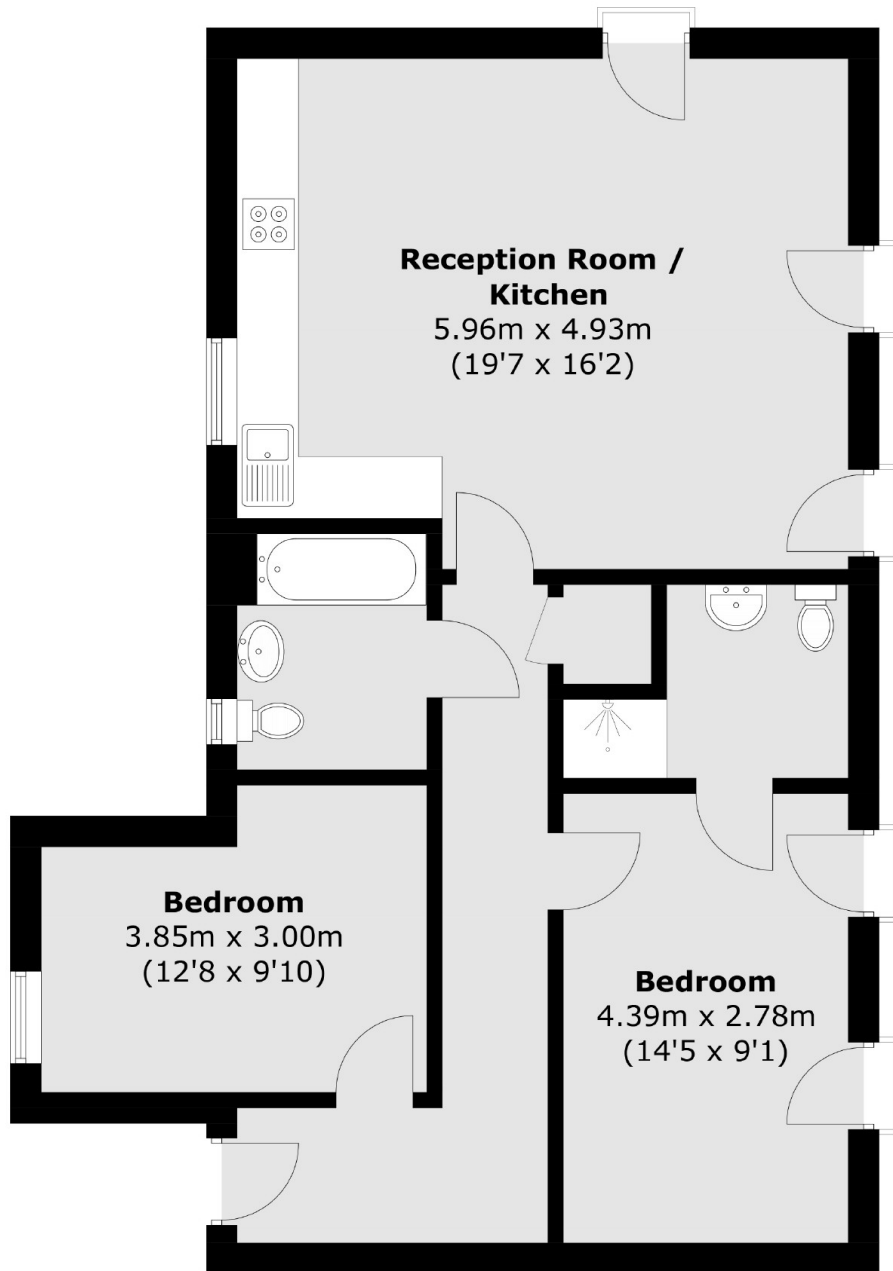
Bright and spacious two double bedroom, 2 bathroom apartment close to Hatcham Conservation area and overlooking Eckington Gardens. Offering fantastic open plan living and approximately 800 square feet of living space, the property has undergone some improvements, including new kitchen with stone work surfaces added. Further benefits include several Juliette balconies in the lounge and main bedroom and free on street parking.

Barlbrough Street is located to the edge of Hatcham Conservation area, and is close to New Cross Gate and Queens Road Peckham stations, with access to central London within minutes. If socialising is what you want, there are numerous cafe's and bars in nearby Peckham.

Features

- Two Double Bedrooms
- Two Bathrooms
- Approximately 800 Sq Ft
- Upgraded Kitchen
- Hatcham Conservation Area
- Chain Free

Barlborough Street,
London, SE14



Total area (approx.): 74.3 sq. m (799.8 sq. ft)

Dexters

New Cross
256 New Cross Road
London
SE14 5PL
Sales
020 7313 3660

Energy Rating: B. We aim to make our particulars both accurate and reliable. However they are not guaranteed; nor do they form part of an offer or contract. If you require clarification on any points then please contact us, especially if you're traveling some distance to view. Please note that appliances and heating systems have not been tested and therefore no warranties can be given as to their good working order.

RICS | Regulated
Estate Agent
and Letting Agent

dexters.co.uk