



## Valley Road, SE14

### £425,000

Nestled in the heart of Greater London, this spacious and stylish 1 bedroom apartment offers contemporary urban living.

Located on the second floor of a modern development, this property boasts a range of desirable features, including an open plan living room, floor-to-ceiling windows, private bike storage, as well as a private balcony that spans the full width of the flat, with plenty of natural light and stunning views of the surrounding area.

### Features

- Private Balcony
- Stunning Green Views
- One Double Bedroom
- Open Plan Living
- Lift Access
- Close To Transport





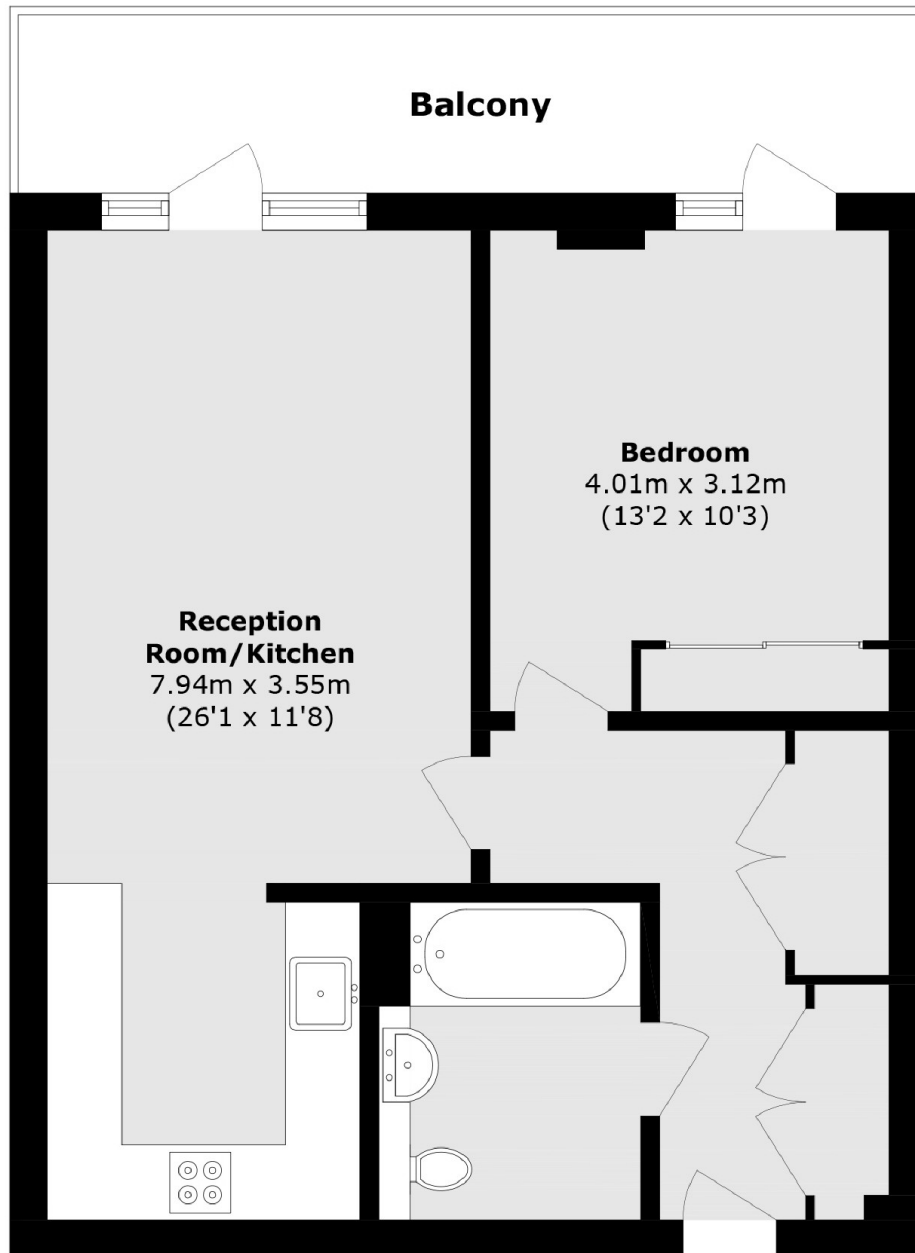
## Valley Road, SE14

Situated close to Deptford Market Yard, known for its local culture, unique trading stalls, eateries and bars. The market is featured in Timeout 'The 33 coolest streets in the world'. Greenwich Market is also only around 1 mile away. The area also benefits from green spaces of Fordham and Deptford Parks and Folkestone Gardens. The property is around 5 minutes from New Cross and approximately 9 minutes to Deptford station, offering quick access for the commuter to key city destinations, including London Bridge in 10 minutes and Canary Wharf in 15 minutes.





Valley Road,  
London, SE14



Total area (approx.): 53.5 sq. m (575.8 sq. ft)  
Balcony area (approx.): 10.3 sq. m (110.8 sq. ft)

**Dexters**

New Cross  
256 New Cross Road  
London  
SE14 5PL  
Sales  
020 7313 3660

Energy Rating: B. We aim to make our particulars both accurate and reliable. However they are not guaranteed; nor do they form part of an offer or contract. If you require clarification on any points then please contact us, especially if you're traveling some distance to view. Please note that appliances and heating systems have not been tested and therefore no warranties can be given as to their good working order.

 **RICS** | Regulated  
Estate Agent  
and Letting Agent

[dexters.co.uk](http://dexters.co.uk)