



Moulding Lane, SE14

£650,000

This stylish 3-bedroom apartment offers contemporary living in a sought-after location. The open-plan living area boasts abundant natural light from floor to ceiling windows and features high-quality finishes throughout. The modern kitchen is fully equipped with integrated appliances, and all three bedrooms are generously sized with ample storage throughout the property. There is a large balcony, 2 bathrooms and the property offers almost 1000 sq ft of living space.

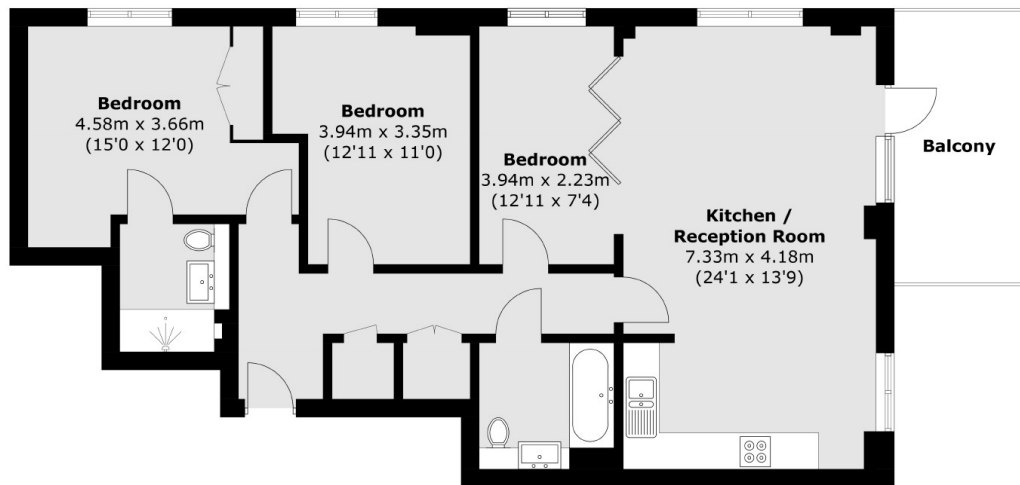
Directions

Deptford Foundry is ideally located a few minutes to New Cross and Deptford High Street Stations, providing access in to London within 15 minutes. There are numerous supermarkets, bars and cafes in nearby New Cross and Deptford, as well as the Deptford Market

Features

- Three Double Bedrooms
- Modern Apartment
- Two Bathrooms
- Close To Transport
- Balcony
- Concierge In Development

Moulding Lane, London, SE14



Total area (approx.): 89.0 sq. m (957.9 sq. ft)
Balcony area: 9.7 sq. m (104.4 sq. ft)