

Shardeloes Road, SE14

£725,000

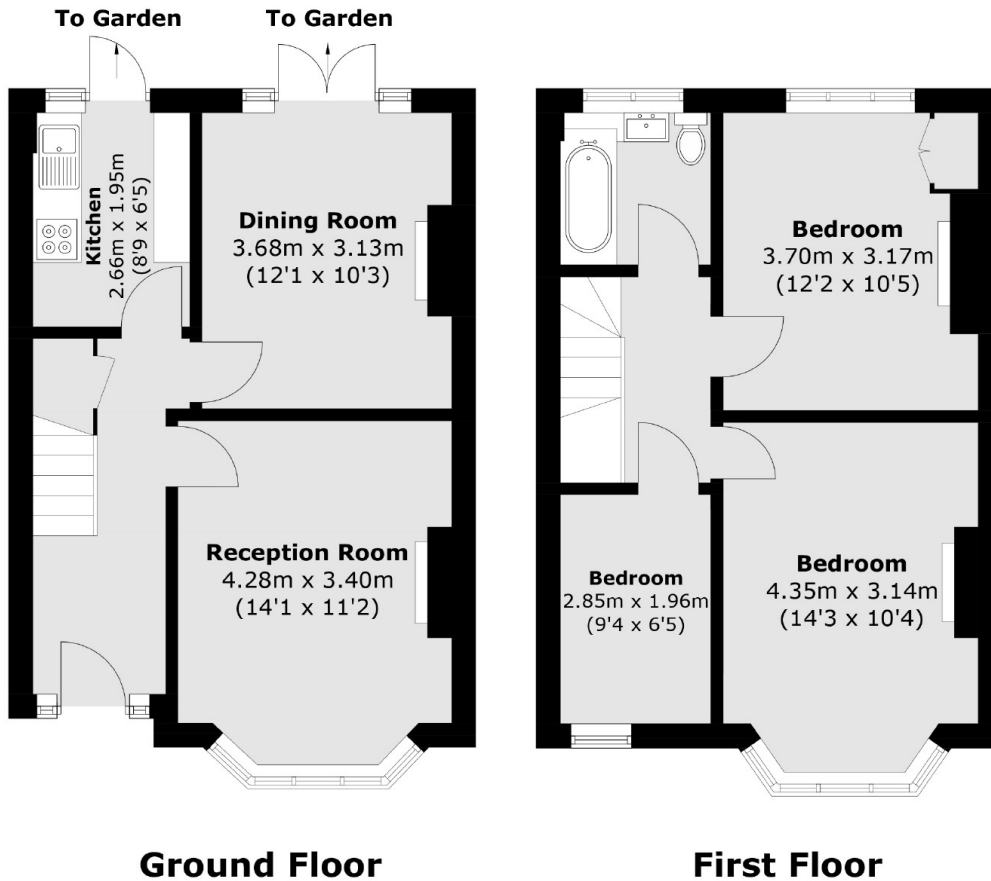
Superb three bedroom family home located on the edge of Telegraph Hill and Brockley Village. These houses lend themselves well to being extended, with multiple nearby properties having undergone extensive renovations and extensions. There are two large reception rooms as well as a kitchen followed by two large double bedrooms and a single room upstairs.

Shardeloes Road is perfectly located just a few minutes from Brockley Village, which offers heaps of boutique cafe's, bars and shops, as well as the mainline and overground links.

Features

- Three Bedrooms
- Mid Terrace
- Extension Possible (STPP)
- Garden
- Close To Brockley
- Near To Telegraph Hill

Shardeloes Road,
London, SE14



Total area (approx.): 80.8 sq. m (869.6 sq. ft)