



Valley Road, SE14

£400,000

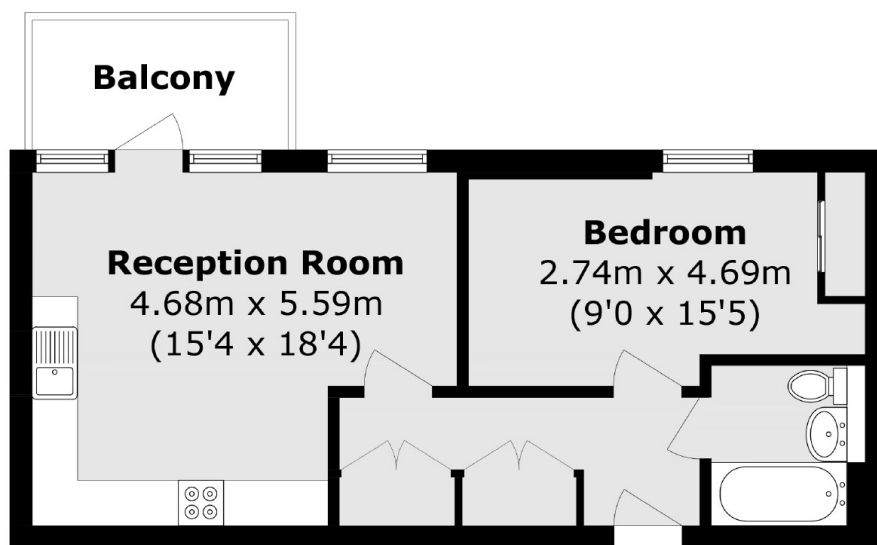
Nestled in the heart of Greater London, this spacious and stylish 1 bedroom apartment offers contemporary urban living. Located on the top floor of a modern development, this property boasts a range of desirable features, including an open plan living room, floor-to-ceiling windows, private bike storage, as well as a private balcony, providing plenty of natural light and stunning views of Canary Wharf and the surrounding area.

Situated on Valley Road, close to Deptford Market Yard, known for its local culture, unique trading stalls, eateries and bars. The market is featured in Timeout 'The 33 coolest streets in the world'. The area also benefits from green spaces of Deptford Park and Folkestone Gardens. The Scene is equidistant from both New Cross and Deptford stations, offering quick access for the commuter to key city destinations, including London Bridge in 10 minutes and Canary Wharf in 15 minutes.

Features

- Top Floor
- Private Balcony
- Canary Wharf Views
- Open Plan Living
- Lift Access
- Close To Transport Links

Valley Road,
London, SE14



Total area (approx.): 51.6 sq. m (555.4 sq. ft)

Balcony area (approx.): 5.8 sq. m (62.4 sq. ft)

Dexters

New Cross
256 New Cross Road
London
SE14 5PL
Sales
020 7313 3660

Energy Rating: . We aim to make our particulars both accurate and reliable. However they are not guaranteed; nor do they form part of an offer or contract. If you require clarification on any points then please contact us, especially if you're traveling some distance to view. Please note that appliances and heating systems have not been tested and therefore no warranties can be given as to their good working order.

 **RICS** | Regulated
Estate Agent
and Letting Agent

dexters.co.uk