



## Brighton Grove, SE14

£625,000

Great opportunity to purchase one of the first houses to be built in the popular Hatcham Park Conservation area. This attractive two bedroom ex 'Railwayman's cottage' is situated within a quiet and private cul-de-sac, just moments from New Cross Gate station. Built approx. 160 years ago for the London to Brighton line, this quaint cottage is offered to the market with No Chain.

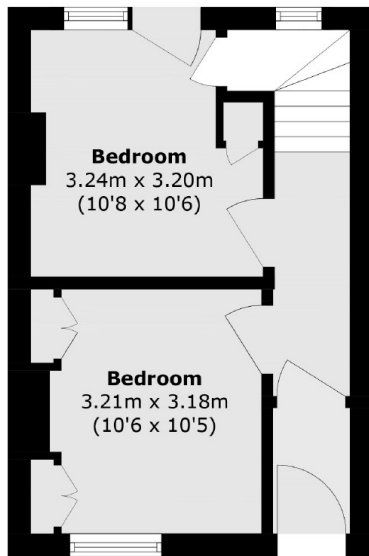
The accommodation is comprised of open plan Kitchen and reception room, bathroom and two bedrooms. Further benefits include front and back rear garden as well as the potential to extend (subject to planning).

Ideally located within a few minutes walk to New Cross Gate station zone 2 with excellent connections, an abundance of popular bars, cafes and live music venues and a short walk to Goldsmiths University.

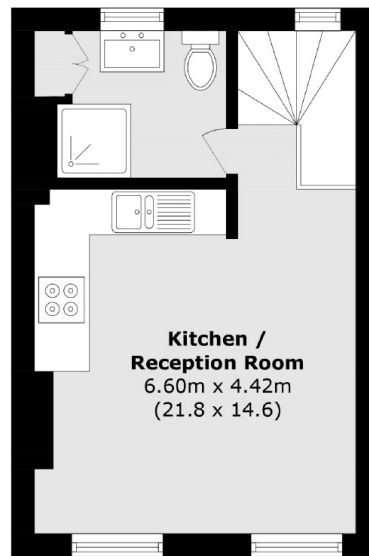
### Features

Former Railwayman's Cottage  
Two Bedrooms  
Front And Rear Garden  
Hatcham Park Conservation Area  
Open Plan Layout  
Potential To Extend

# Brighton Grove, London, SE14



**Ground Floor**



**First Floor**

Total area (approx.): 55.5 sq. m (597.4.0 sq. ft)