



Upper Brockley Road, SE4  
£1,400,000

**Dexters**





## Upper Brockley Road, SE4

Welcoming this stunning Victorian terraced home on one of Brockley Conservations best roads. Arranged over four floors, and at almost 2000 Sq Ft of internal living space, this family home has been loved by its current owners for several decades. There is the scope to make it your own, whilst living very comfortably.

Upon entering this fabulous home, you are greeted with a large, dual aspect double reception. The lower floor holds the 'semi-open plan' kitchen diner, utility room and a separate WC. There is the potential to extend, subject to consent, with many other neighbours having undertaken stunning extension and refurbishment works. To the first floor, there is a large double bedroom spanning the full width of the house, with family bathroom as well as a separate WC. There is further potential to turn this in to one large suite. The top floor hosts two good sized double bedrooms. There is the possibility of extending in to the loft, subject to planning permission.

This beautiful home further benefits front and rear gardens, with the latter being west facing for afternoon and evening sunshine, and extending to approximately 70'.

### Features

- Four Double Bedrooms
- Stunning Victorian Home
- Large Rear Garden
- Brockley Conservation Area
- Scope For Extension (STPP)
- Almost 2000 Sq Ft Of Living







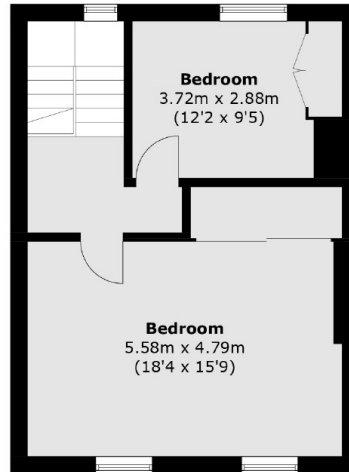
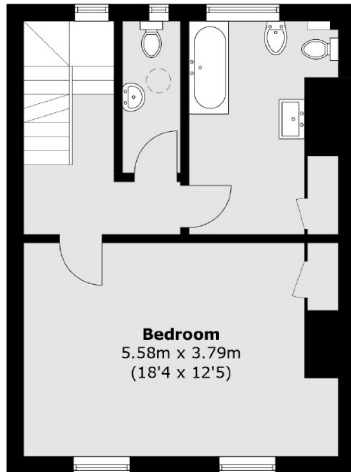






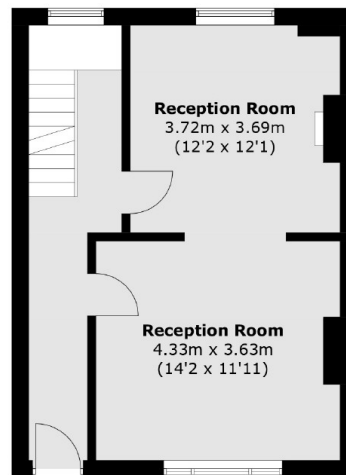
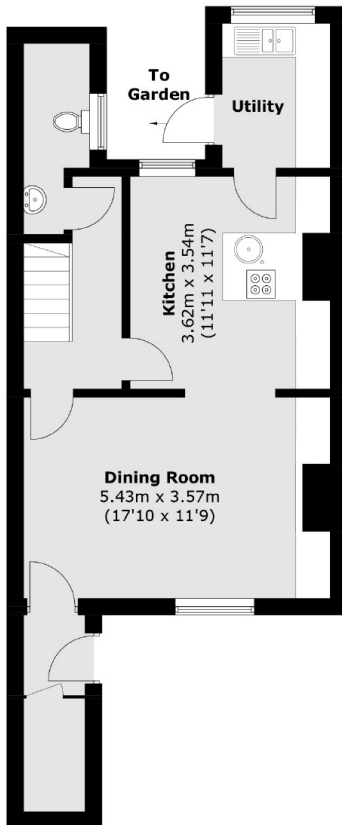


# Upper Brockley Road, London, SE4



**First Floor**

**Second Floor**



**Lower Ground Floor**

**Ground Floor**

Total area (approx.): 182.0 sq. m (1,959.0 sq. ft)