



## Glenville Grove, SE8

£350,000

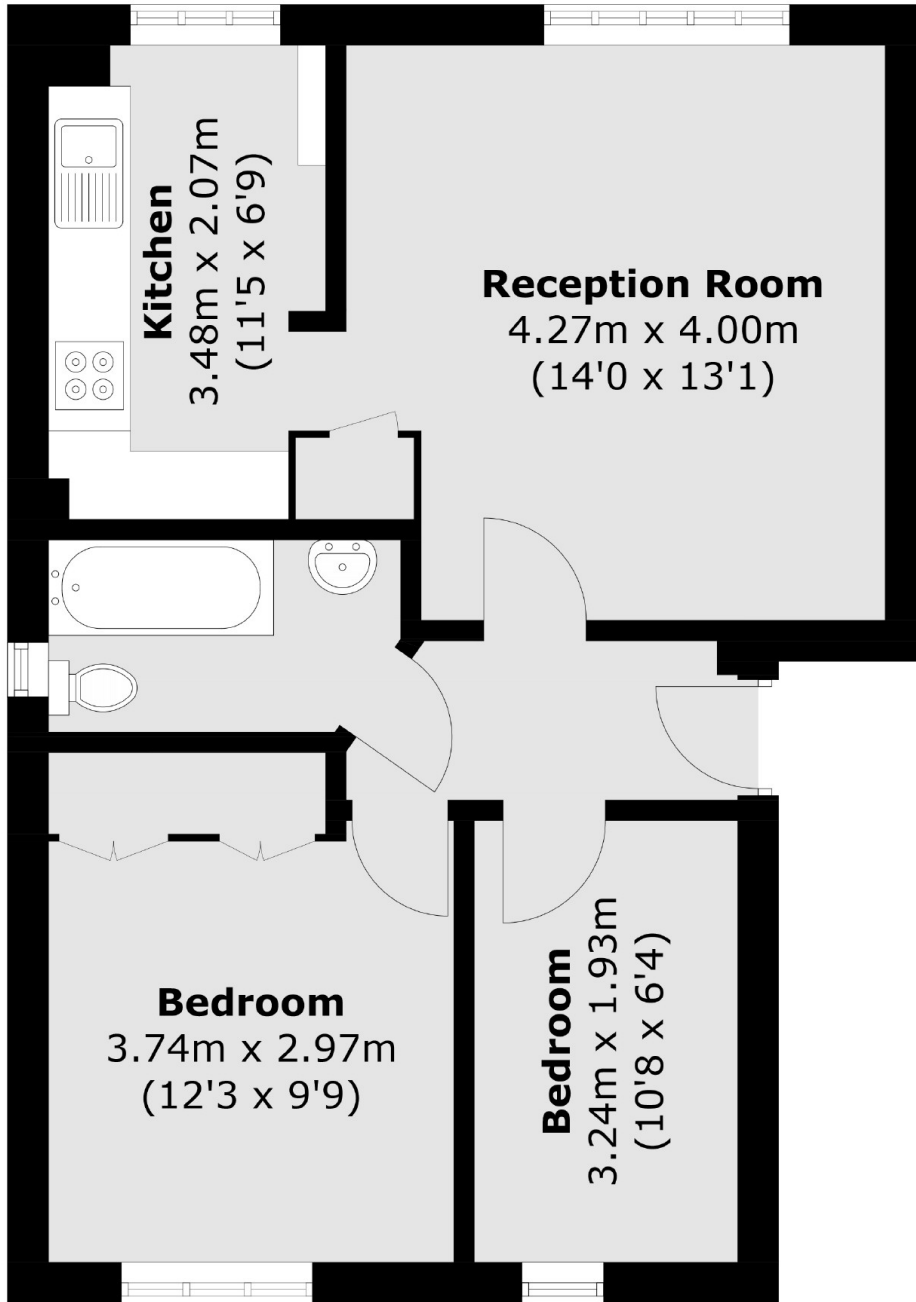
A brilliant opportunity to purchase this two double bedroom apartment comprising a spacious living room, separate kitchen and a modern bathroom. This flat is situated next to the popular Margaret McMillan Park and offers easy access for London commuters.

New Cross and Deptford Overground, BR and DLR stations all within walking distance. Deptford High Street is extremely close by offering supermarket brands such as Iceland, Asda and Tesco, various delicatessens trendy cafes, London Velo and The Waiting Room. The High Street also holds the tri-weekly Deptford Market where you can find almost anything on the popular flea market.

### Features

- Two Bedrooms
- Spacious Living Space
- Close to Multiple Schools
- Deptford Market Nearby
- Great Transport Links
- Modern Development

Glenville Grove,  
London, SE8



Total area (approx.): 49.8 sq. m (536.0 sq. ft)