



## Endwell Road, SE4

£350,000

This first floor split level apartment, comes with lounge, kitchen, bathroom and three bedrooms.

The property is part of a period conversion and would be ideal for investors or buyers who want to add their own stamp.

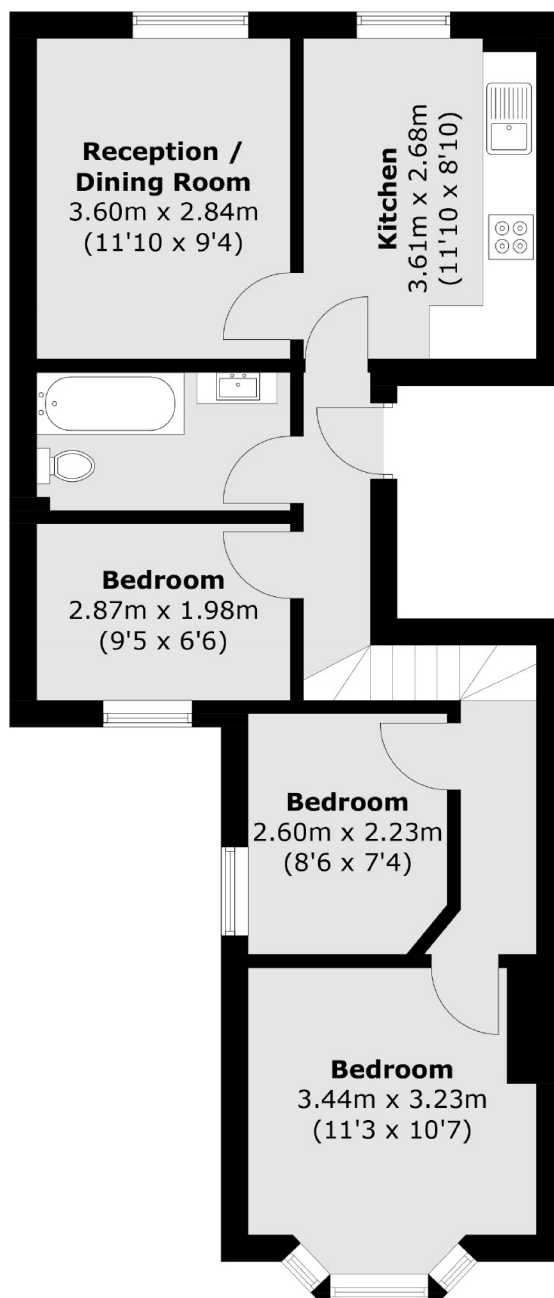
Brockley Station is less than a 10 minute walk away, offering easy access to London Bridge in under 15 minutes and the overground into Highbury and Islington.

Other stations within walking distance are Nunhead, New Cross and New Cross Gate Stations.

### Features

- Three bedrooms
- First Floor
- Excellent Location
- Great transport links
- Investment opportunity
- Chain free

Endwell Road,  
London, SE4



Total area (approx.): 55.8 sq. m (600.6 sq. ft)