



Queens Road, SE14

£1,250,000

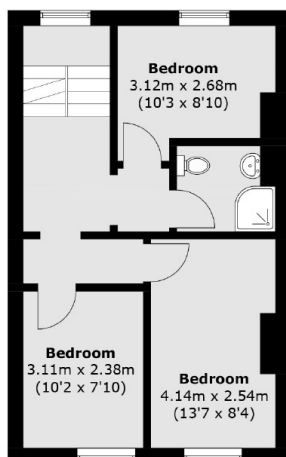
This stunning Grade II Listed, early Victorian House is sure to impress. Arranged over four floors, and currently set up as a house of multiple occupancy, there are 8 bedrooms and 3 bathrooms over 1900 Sq Ft / 179 Sq M of internal space.

Queens Road is ideally located for access to both New Cross and Peckham. New Cross Gate Station is around 0.3 miles and Queens Road Peckham is within 0.5 miles. There are several great schools nearby including Edmund Waller and Kender Primary Schools, Haberdashers Hatcham College and the famed Goldsmiths, University Of London.

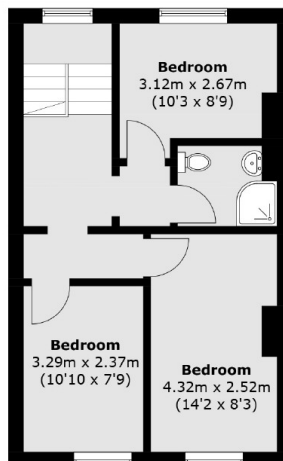
Features

- Over 1900 Sq Ft/ 179 Sq M
- Grade II Listed
- Victorian Semi-Detached House
- Arranged Over Four Floors
- Close To Transport
- Eight Bedrooms

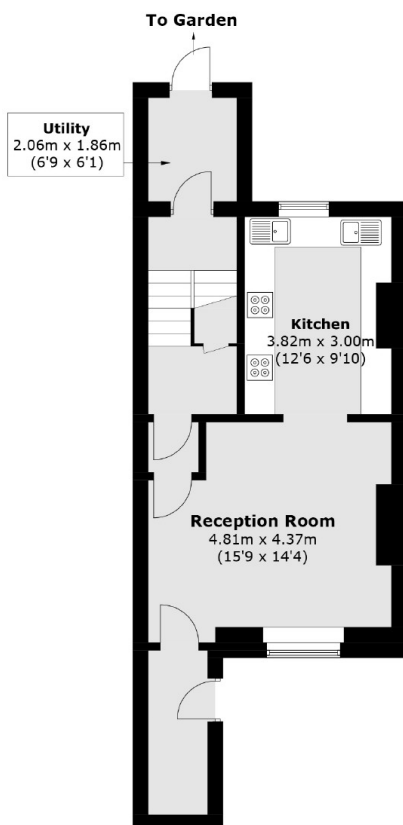
Queens Road, London, SE14



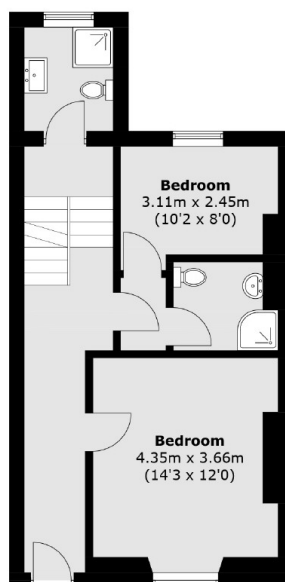
First Floor



Second Floor



Lower Ground Floor



Raised Ground Floor

Total area (approx.): 179.3 sq. m (1,929.9 sq. ft)

Dexters

New Cross
256 New Cross Road
London
SE14 5PL
Sales
020 7313 3660

Energy Rating: D. We aim to make our particulars both accurate and reliable. However they are not guaranteed; nor do they form part of an offer or contract. If you require clarification on any points then please contact us, especially if you're traveling some distance to view. Please note that appliances and heating systems have not been tested and therefore no warranties can be given as to their good working order.

 **RICS** | Regulated
Estate Agent
and Letting Agent

dexters.co.uk