



Moulding Lane, SE14

£500,000

A contemporary two bedroom apartment in one of New Cross's newest residential developments; situated on the ninth floor. This extremely light apartment with floor to ceiling windows and a private balcony offers panoramic views of London's iconic skyline and residents also benefit from concierge services.

The property benefits from an en-suite shower room to the main bedroom, open plan reception room/kitchen/diner and plenty of storage.

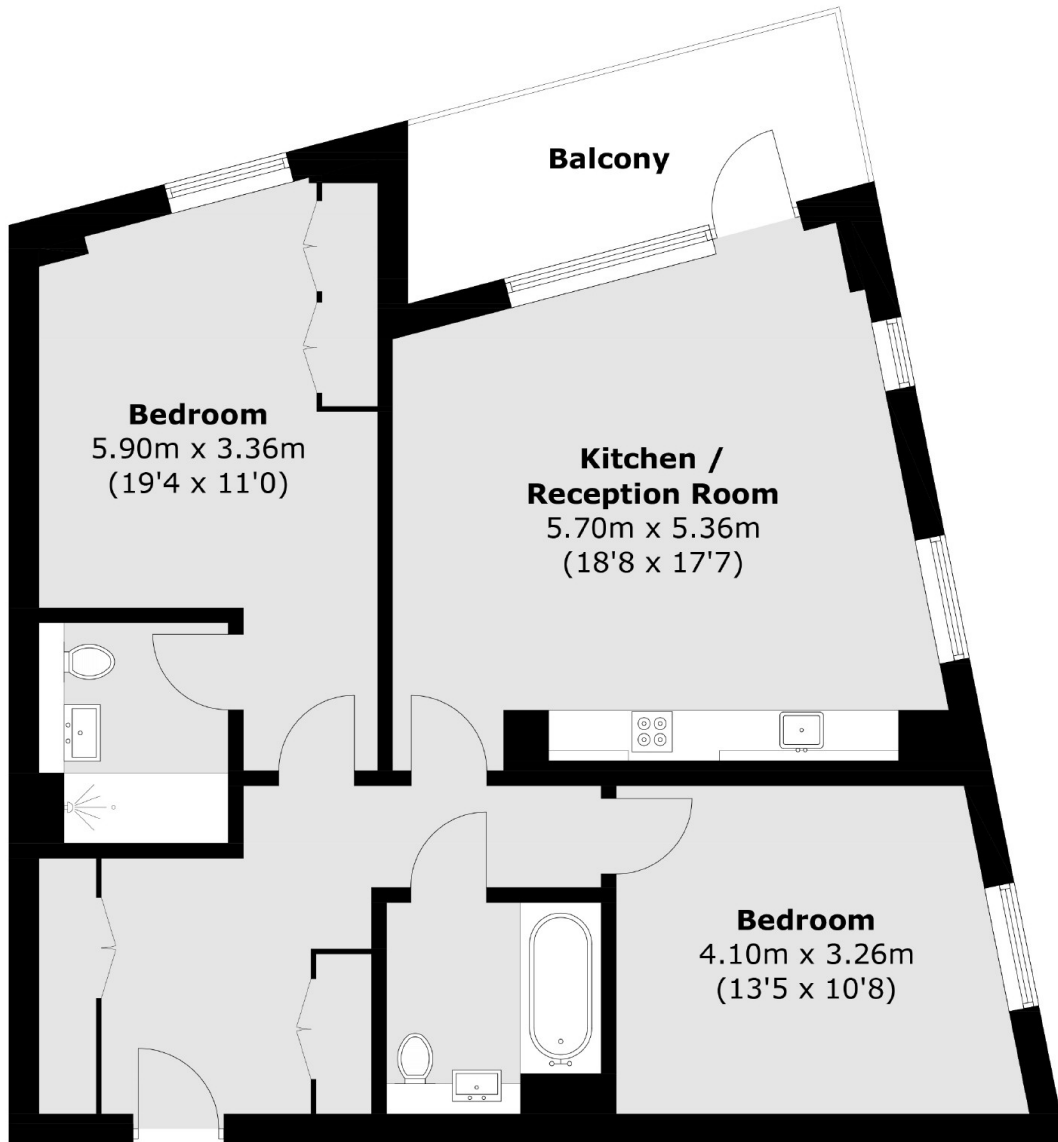
There is also a high lease length of approximately 990 years remaining.

Situated on Moulding Lane close to Deptford Market Yard, known for its local culture, unique trading stalls, eateries and bars. The market is featured in Timeout 'The 33 coolest streets in the world'. The area also benefits from green spaces of Deptford Park and Folkestone Gardens, Cobalt Tower is equidistant from both New Cross and Deptford stations, offering quick access for the commuter to key city destinations, including London Bridge in 10 minutes and Canary Wharf in 15 minutes.

Features

- Two Bedrooms
- Over 77 sq.m / 830 sq.ft
- Private Balcony
- Panoramic Views of London
- Concierge
- Close To Transport Links

Moulding Lane, London, SE14



Total area (approx.): 77.4 sq. m (833.1 sq. ft)
Balcony: 7.8 sq. m (83.9 sq. ft)

Dexters

New Cross
256 New Cross Road
London
SE14 5PL
Sales
020 7313 3660

Energy Rating: B. We aim to make our particulars both accurate and reliable. However they are not guaranteed; nor do they form part of an offer or contract. If you require clarification on any points then please contact us, especially if you're traveling some distance to view. Please note that appliances and heating systems have not been tested and therefore no warranties can be given as to their good working order.

 **RICS** | Regulated
Estate Agent
and Letting Agent

[dexters.co.uk](https://www.dexters.co.uk)