



Manor Avenue, SE4 £650,000

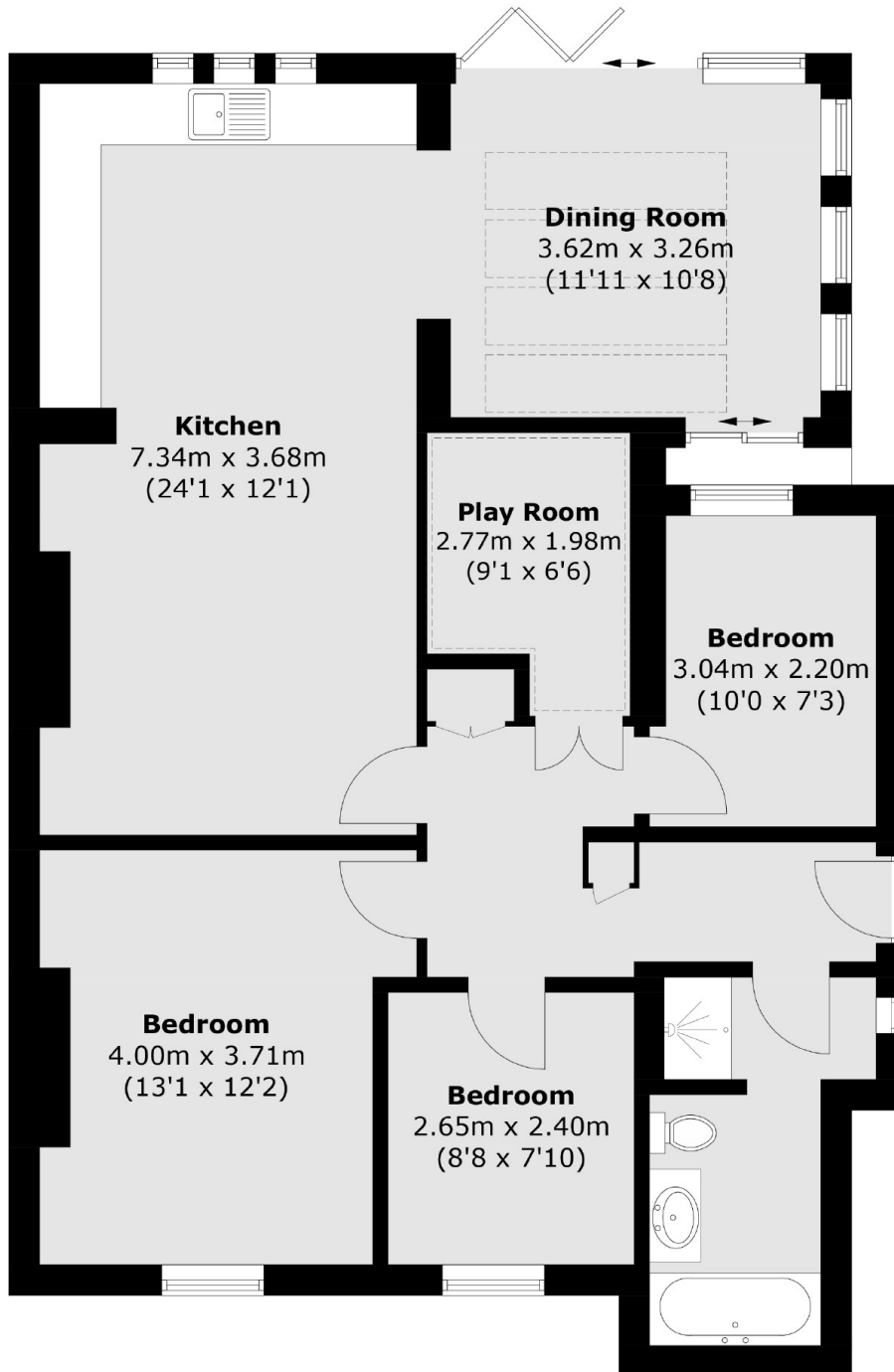
Stunning three bedroom Victorian conversion apartment on one of the best roads in Brockley Conservation Area. Having been completely refurbished internally, to a high standard by the current sellers, this stunning home offers over 900 Sq Ft of living space. There is a large open plan kitchen/ diner and lounge with doors on to the private rear garden, three bedrooms as well as a stylish new bathroom. The sellers have utilised a space within the apartment that was previously unusable and have managed to turn it in to a playroom for children.

Manor Avenue is one of the best tree lined roads in the Conservation Area and is close to various schools, including Haberdashers Hatcham Free School and John Stainer Primary Schools, Haberdashers Hatcham College and the famous Goldsmiths, University Of London. Multiple stations are nearby, including Brockley Overground and St Johns Mainline.

Features

- Three Bedrooms
- Open Plan Living Space
- Victorian Conversion
- Private Garden
- Refurbished Throughout
- Brockley Conservation Area

Manor Avenue,
London, SE4



Total area (approx.): 91.1 sq. m (980.6 sq. ft)