



Arbutnot Road, SE14

£1,850 Per calendar month

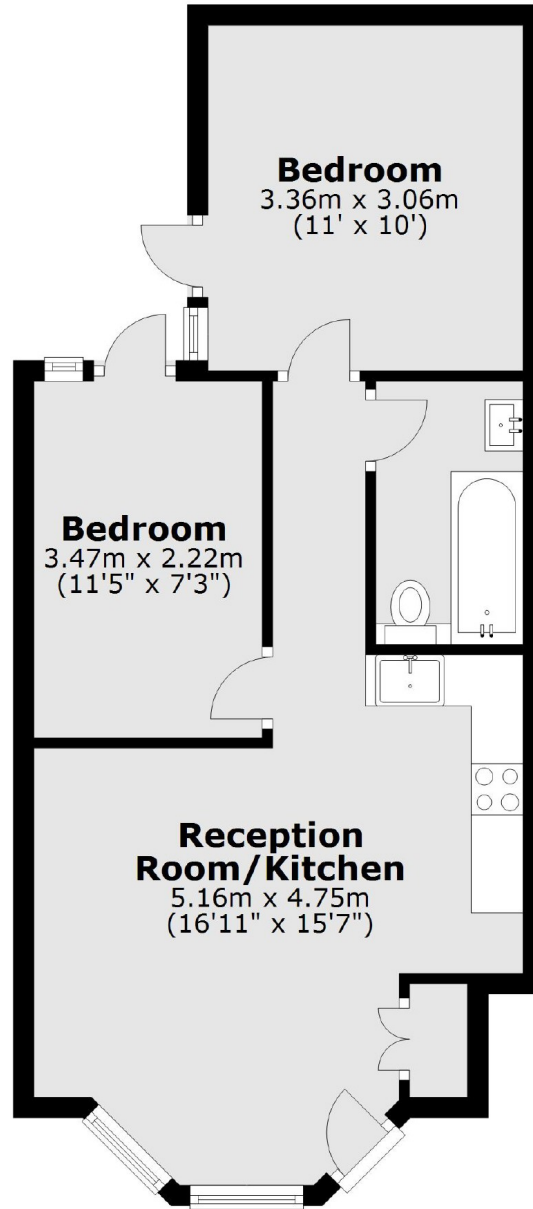
A two double bedroom Victorian maisonette including an open plan living space and modern features throughout.

The property is situated in the highly sought after Telegraph Hill Conservation area, offering easy access to New Cross Gate and New Cross Station as well as the amenities on New Cross Road.

Features

- Victorian Maisonette
- Two Double Bedrooms
- Open Plan Living
- Modern Features Throughout
- Close To Station
- Unfurnished

Arbuthnot Road, London, SE14



Total area: approx. 44.8 sq. metres (482.7 sq. feet)