



Admiral Street, SE8

£850,000

This three bedroom Victorian home offers spacious living. There are two reception rooms on the ground floor which have been knocked into one; a generous sized kitchen, leading onto a shower room, as well as the private garden. Upstairs there are three bedrooms and a family bathroom.

The property has recently been redecorated and comes equipped with double glazed wood sash windows to the front.

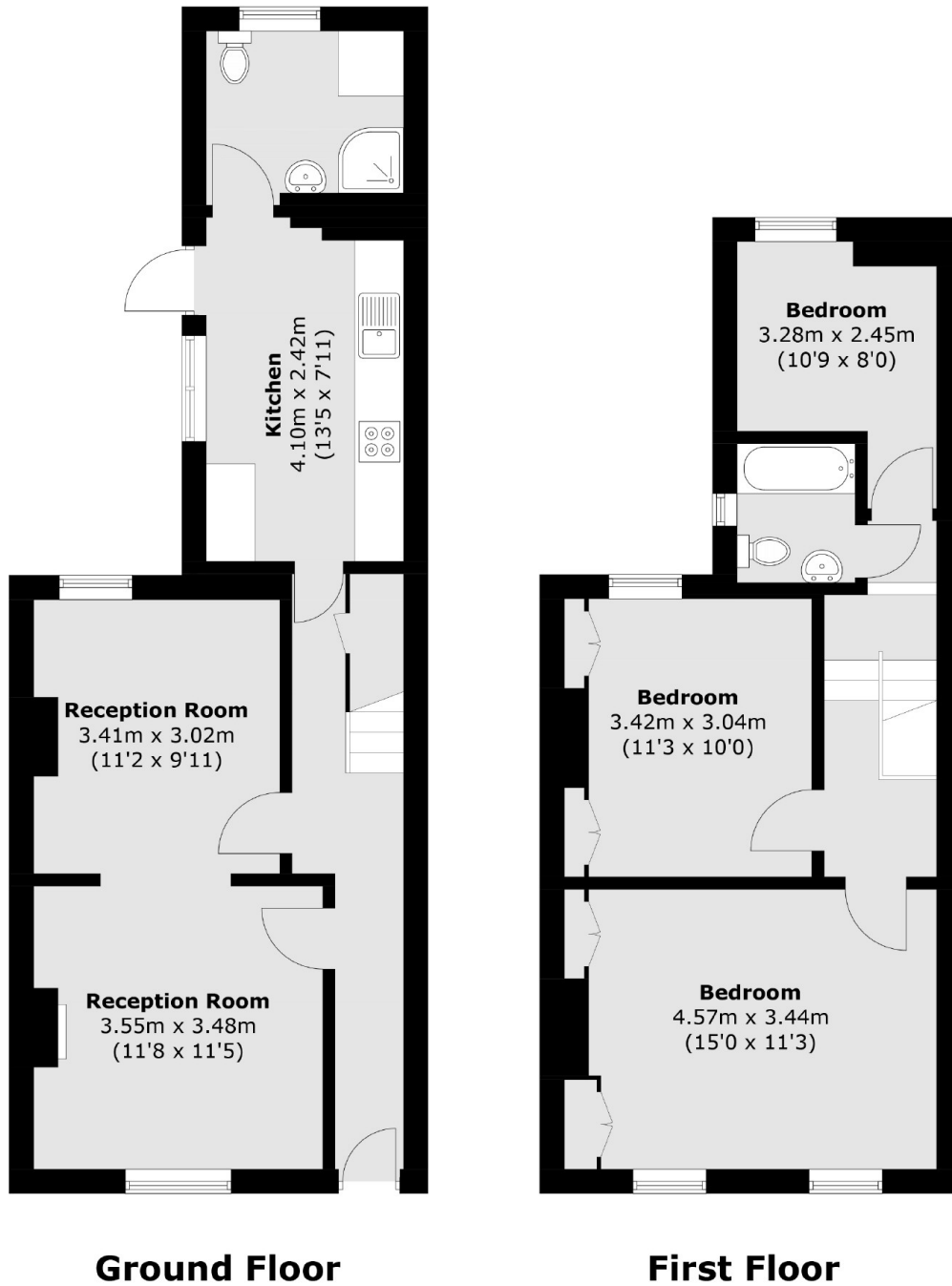
Internal viewing is highly recommended.

St Johns is a friendly neighbourhood popular among young professionals and families. The station is a 3-minute walk from where there are fast and frequent services into London Bridge and Cannon Street. Deptford Bridge DLR is nearby for access to Canary Wharf and the London Overground from New Cross has easy access to East and North London.

Features

- Three Bedrooms
- Freehold
- Charming Features
- Private Garden
- No Onward Chain
- Brookmill Conservation Area

Admiral Street,
London, SE8



Total area (approx.): 91.7 sq. m (986.9 sq. ft)