



Laurie Grove, SE14

£785,000

This contemporary designed home is located in the heart of New Cross on a quiet side road, close to local amenities and transport links. Upon entering, you are greeted by a large welcoming hallway which leads on to the large open plan Kitchen/Living/ Dining space. The seamless connection to the private garden is achieved through the use of bi-folding doors, allowing for transition between indoor and outdoor living spaces. This feature not only enhances the overall aesthetic appeal of the house but also provides ample natural light and a sense of space.

In addition to the open plan area, the house also contains a large study, providing a dedicated space for work. This room also offers versatility, and could become a third bedroom perfect for visiting family or friends. Furthermore, there is the convenience of a downstairs cloakroom. On the first floor, there are two spacious double bedrooms along with the family bathroom providing a well-designed and functional space. The landscaped private rear garden combines both paved and turfed areas.

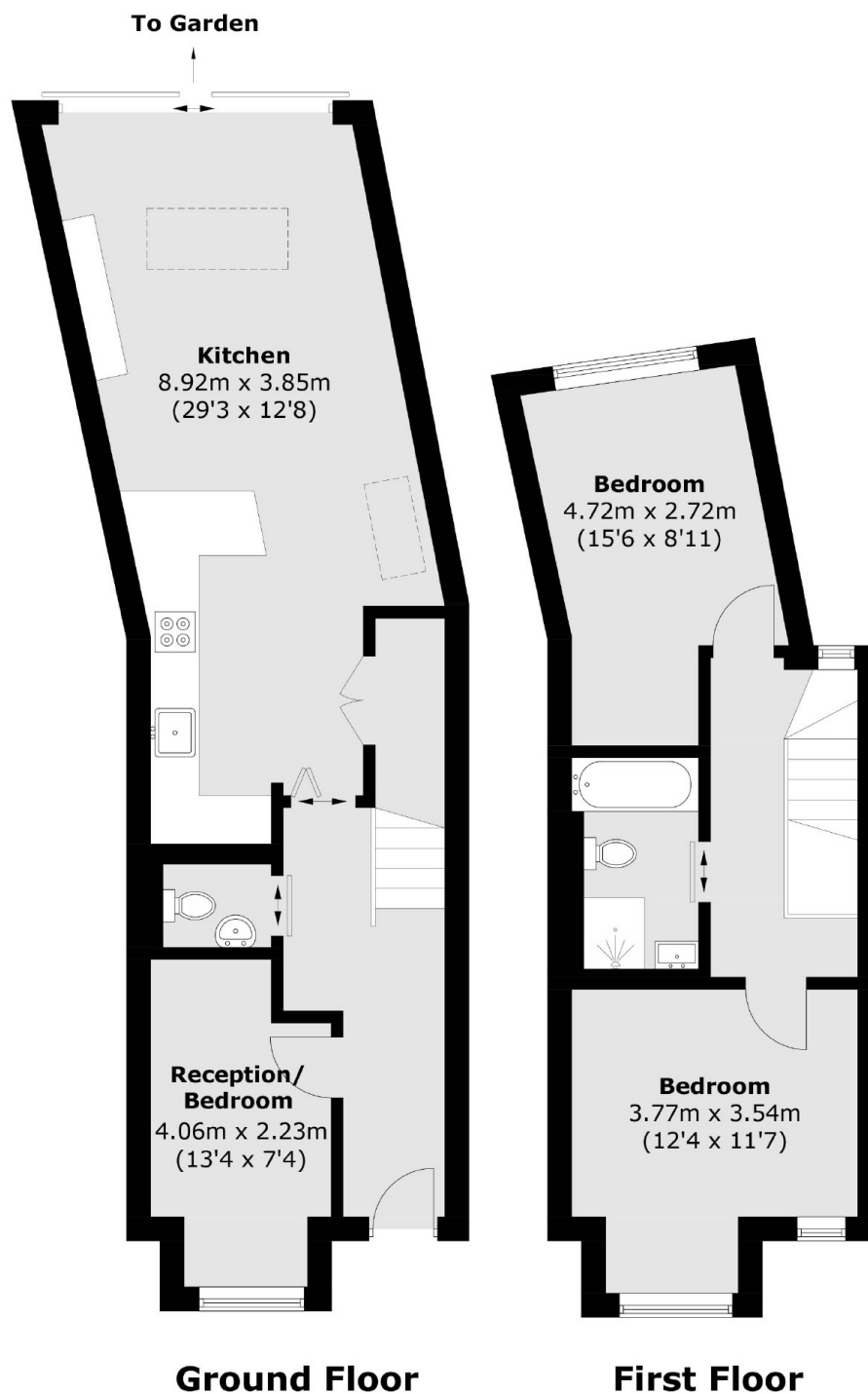
The home has been built to strict modern standards, and has the added benefit of an Air Source Heat Pump offering eco-efficiency as well as underfloor heating downstairs. There will further be a new build warranty to provide peace of mind.

Laurie Grove is located just 0.2 miles from New Cross High Street. New Cross is home to Goldsmiths, University of London, Haberdashers' Hatcham College and Addey and Stanhope School. There are ideal transport links close to Laurie Grove with the New Cross Gate train station only 0.2 miles away and New Cross station 0.4 miles away, providing both Mainline and Overground services.

Features

- New Build 3 Bedroom House
- Air Source Heat Pump
- Close to New Cross Station
- Underfloor Heating Downstairs
- Generous Private Garden
- Large Study/Third Bedroom
- Ready To Move In

Laurie Grove, London, SE14



Total area (approx.): 87.4 sq. m (940.8 sq. ft)