



## Goodwood Road, SE14

£475,000

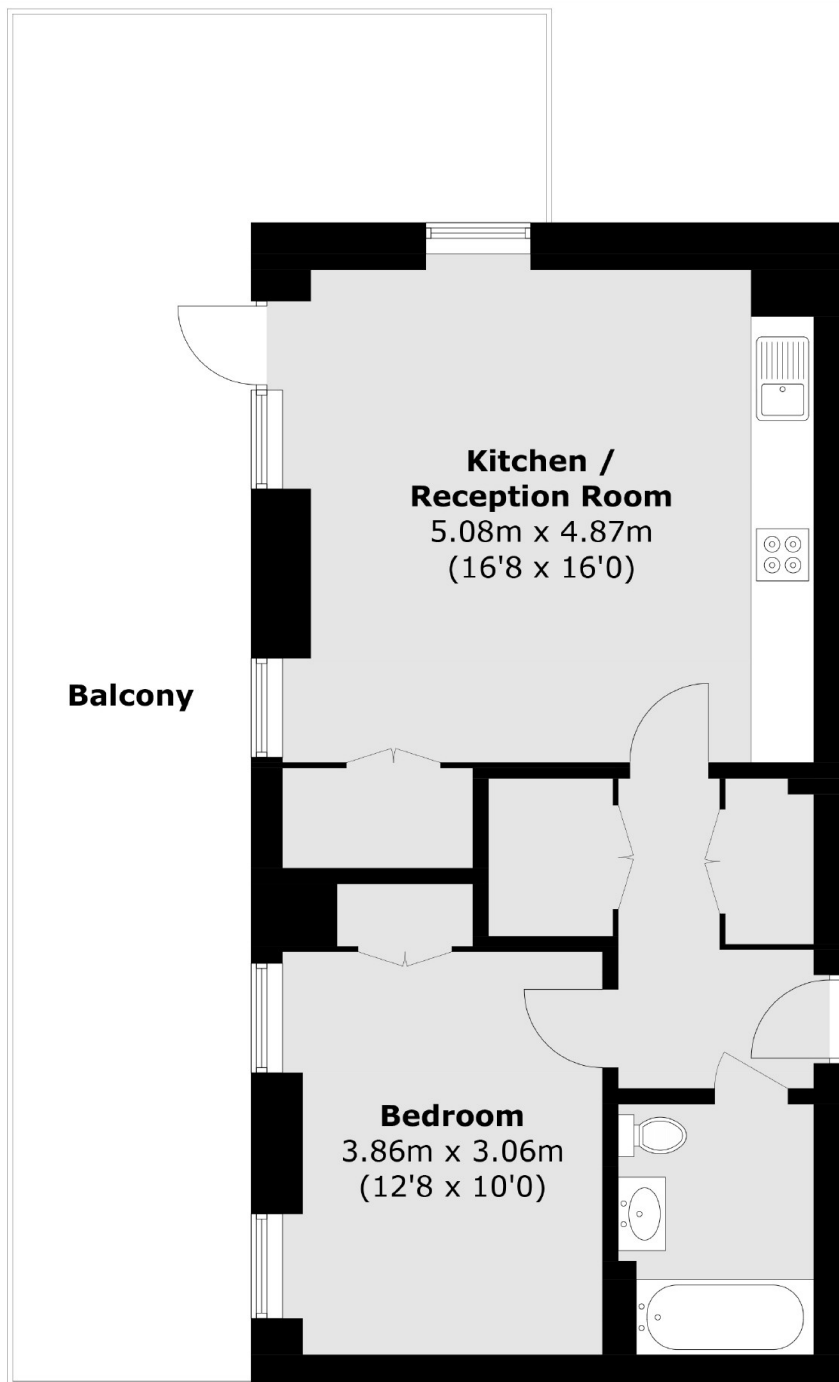
A modern, one bedroom apartment in one of New Cross' most sought after developments. This superb property is one of the larger one bedroom properties within the development, and has the added benefit of having a large almost 400 Sq. Ft. Private terrace with views towards the City of London.

Goodwood Road is situated in the heart of New Cross with an abundance of bars, restaurants, and independent coffee shops on your doorstep. New Cross Gate, New Cross, Deptford and Deptford Bridge stations are all within easy access providing frequent rail links into Central London and the City.

### Features

- Private Terrace With City Views
- Fantastic Condition
- One Double Bedroom
- Excellent Location Close To Transport
- Bright And Spacious
- Modern Interior

# Goodwood Road, London, SE14



Total area (approx.): 52.3 sq. m (562.9 sq. ft)  
Balcony area (approx.): 35.5 sq. m (382 sq. ft)

## Dexters

New Cross  
256 New Cross Road  
London  
SE14 5PL  
Sales  
020 7313 3660

Energy Rating: B. We aim to make our particulars both accurate and reliable. However they are not guaranteed; nor do they form part of an offer or contract. If you require clarification on any points then please contact us, especially if you're traveling some distance to view. Please note that appliances and heating systems have not been tested and therefore no warranties can be given as to their good working order.

 **RICS** | Regulated  
Estate Agent  
and Letting Agent

dexters.co.uk