

Moulding Lane, SE14

£450,000

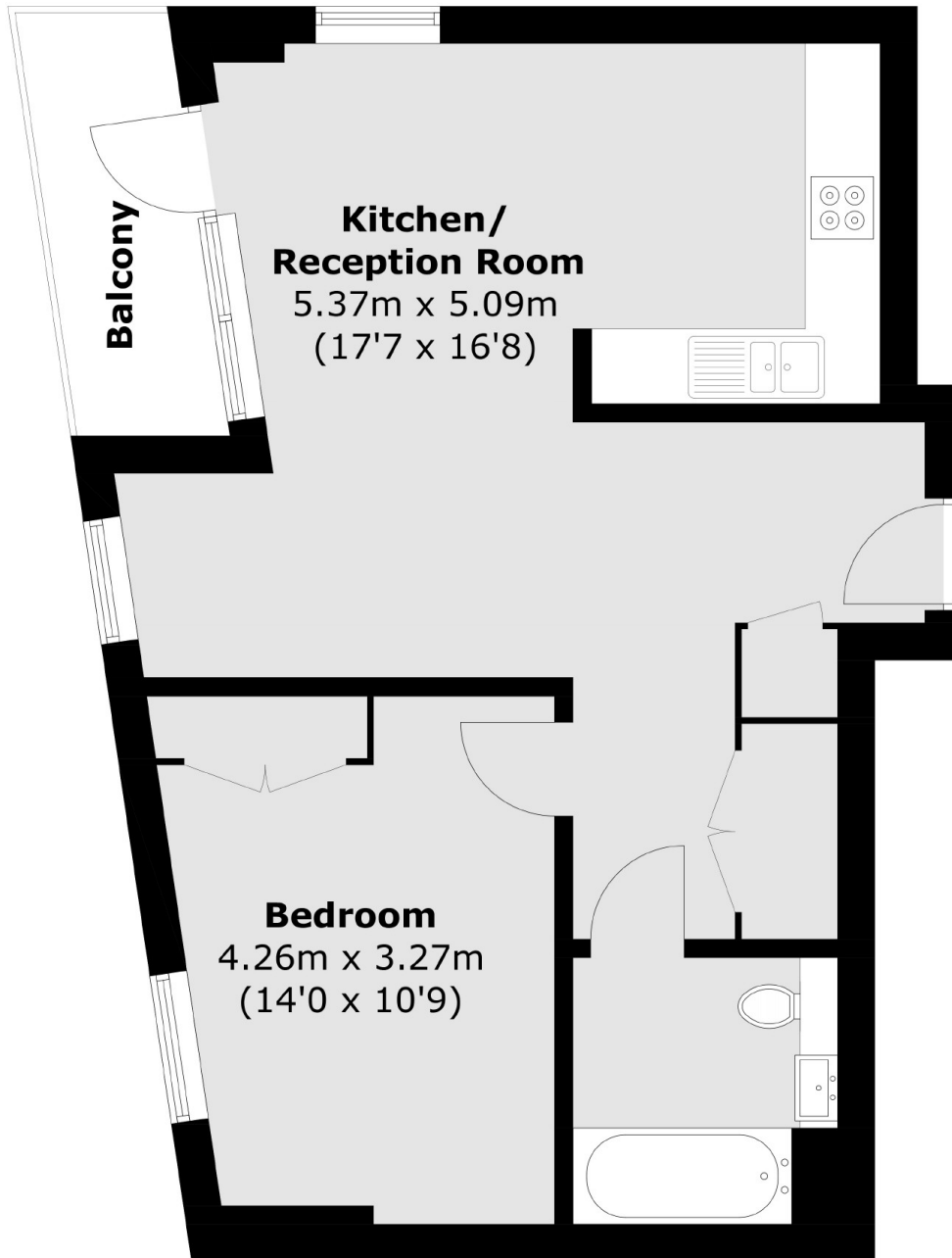
A contemporary one bedroom apartment in one of New Cross's newest residential developments. This extremely light apartment with floor to ceiling windows and a private balcony offers panoramic views of London's iconic skyline and residents also benefit from concierge services.

Situated on Moulding Lane close to the green spaces of Deptford Park and Folkestone Gardens, Cobalt Tower is equidistant from both New Cross and Deptford stations, offering quick access for the commuter to key city destinations, including London Bridge in 10 minutes and Canary Wharf in 15 minutes.

Features

- New Build Development
- Open Plan Kitchen/Reception
- Double Bedroom
- Private Balcony
- Stunning Views

Moulding Lane,
London, SE14



Total area (approx.): 51.2 sq. m (551.1 sq. ft)
Balcony area (approx.): 4.2 sq. m (45.2 sq. ft)