



## Lewisham Way, SE14

£4,500 Per calendar month

**Dexters**



## Lewisham Way, SE14

A six double bedroom Victorian terraced house, including modern features, three bathrooms, a private rear garden, utility room and ample storage throughout. The property would be ideal for six professional sharers or students alike.

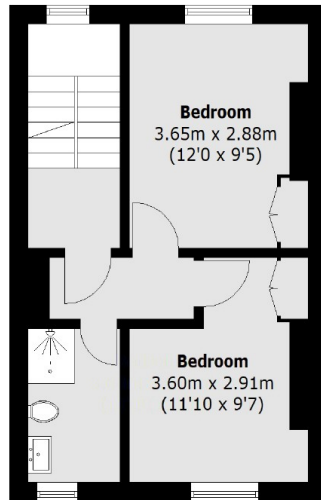
Lewisham Way is located close to New Cross Gate and New Cross stations, Goldsmiths University, local amenities such as restaurants, various cafés, bars and pubs as well as a large Sainsbury's on New Cross Road.

### Features

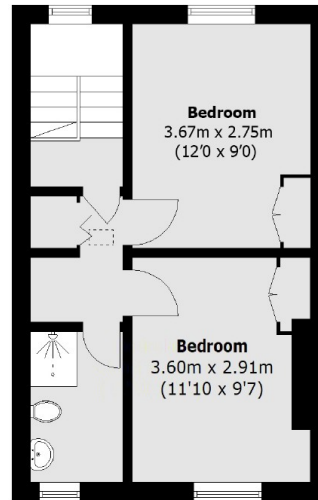
- Close to Goldsmiths
- Six Bedrooms
- Three Bathrooms
- Good Condition
- Private Garden
- Students Welcome



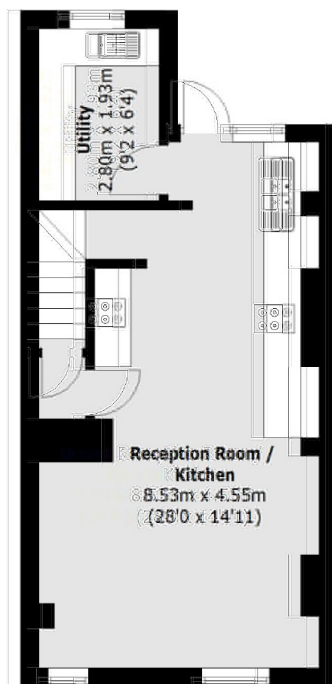
# Lewisham Way, London, SE14



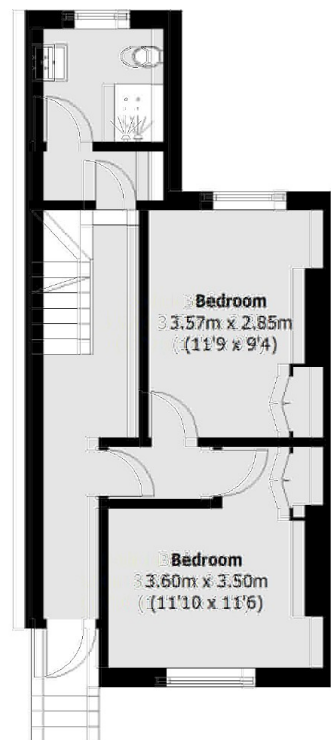
First Floor



Second Floor



Lower Ground Floor



Upper Ground Floor

Total area (approx.): 149.2 sq.m (1,605.9 sq.ft)