



Farrow Lane, SE14

£250,000

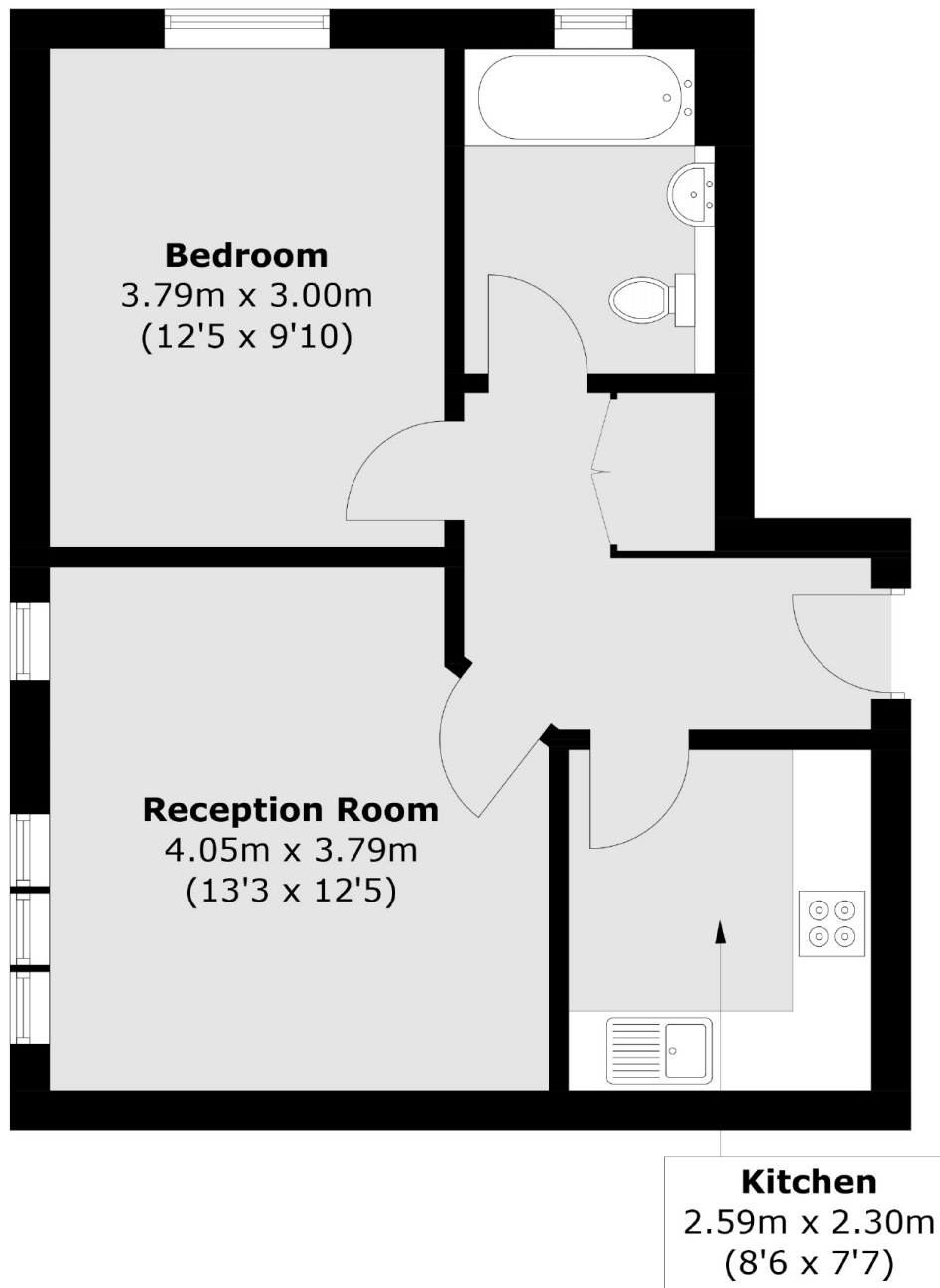
This modern one bedroom flat benefits from a sought-after and vibrant location and comprises a double bedroom, kitchen and bathroom. It showcases modern interior design complemented by ample natural light and comes with its own allocated parking space.

Farrow Lane is a short distance from the fantastic amenities and facilities of New Cross Road, while New Cross Gate Station is also within reach.

Features

- One Bedroom
- Top Floor
- Modern Design
- Allocated Parking
- Great Condition
- No Onward Chain

Farrow Lane, London, SE14



Total area (approx.): 44.9 sq. m (483.3 sq. ft)