



Camplin Street, SE14

£475,000

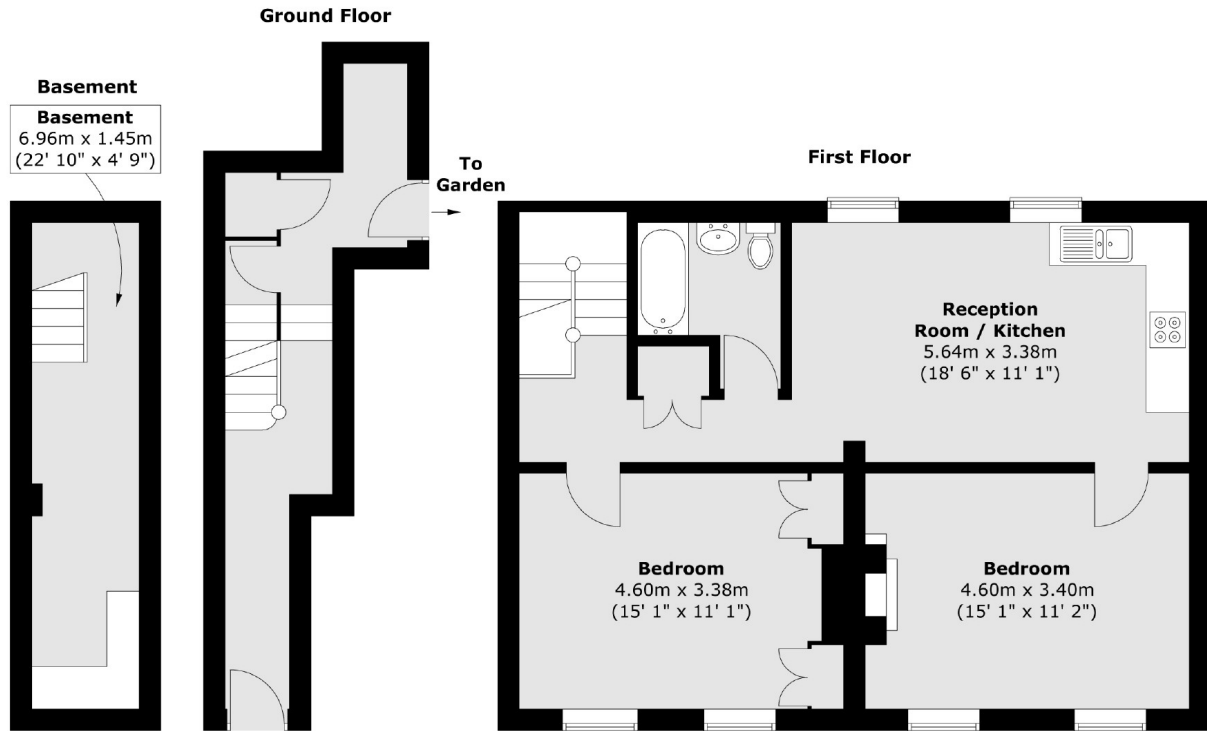
This charming and very well presented two bedroom maisonette offers lateral living space and an open plan kitchen living area. The property also has its own basement, private garden space and own entranceway.

Camplin Street is situated within the Hatcham Park conservation area so perfectly located for access to New Cross Gate and New Cross main line station and the DLR at Deptford Bridge.

Features

- Two Double Bedrooms
- Period Features
- Private Garden Space
- Own Front Door
- Basement
- Transport Links

Camplin Street, London, SE14



Total area (approx.) : 89 sq. m (958 sq. ft)