



Pomeroy Street, SE14

£375,000

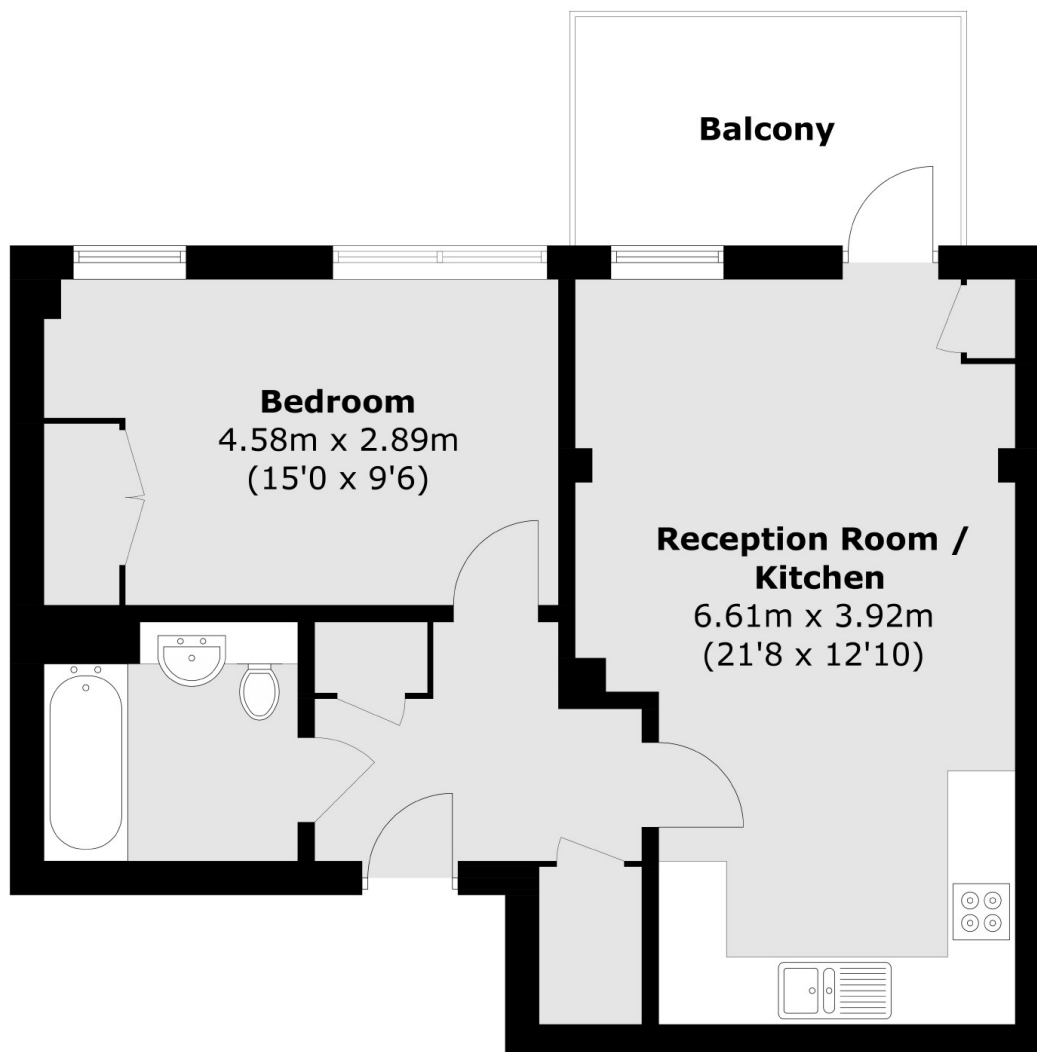
A one bedroom modern apartment in one of New Cross' most sought after developments. This superb property is one of the larger one bedrooms within the development, is particularly light and benefits from a private balcony.

Pomeroy Street is situated in the heart of New Cross with an eclectic mix of bars, restaurants, and independent coffee shops on your doorstep. Queens Road Peckham, New Cross gate, Deptford and Deptford Bridge DLR are all within reach.

Features

- One bedroom
- Private Balcony
- Modern Design
- Stunning Condition
- Open Plan
- Good Transport Links

Pomeroy Street,
London, SE14



Total area (approx.): 50.8 sq. m (546.8 sq. ft)

Balcony: 6.9 sq. m (74.3 sq. ft)

Dexters

New Cross
256 New Cross Road
London
SE14 5PL

Sales
020 7313 3660

Energy Rating: B. We aim to make our particulars both accurate and reliable. However they are not guaranteed; nor do they form part of an offer or contract. If you require clarification on any points then please contact us, especially if you're traveling some distance to view. Please note that appliances and heating systems have not been tested and therefore no warranties can be given as to their good working order.

 **RICS** | Regulated
Estate Agent
and Letting Agent

dexters.co.uk