

New Cross Road, SE14

£325,000

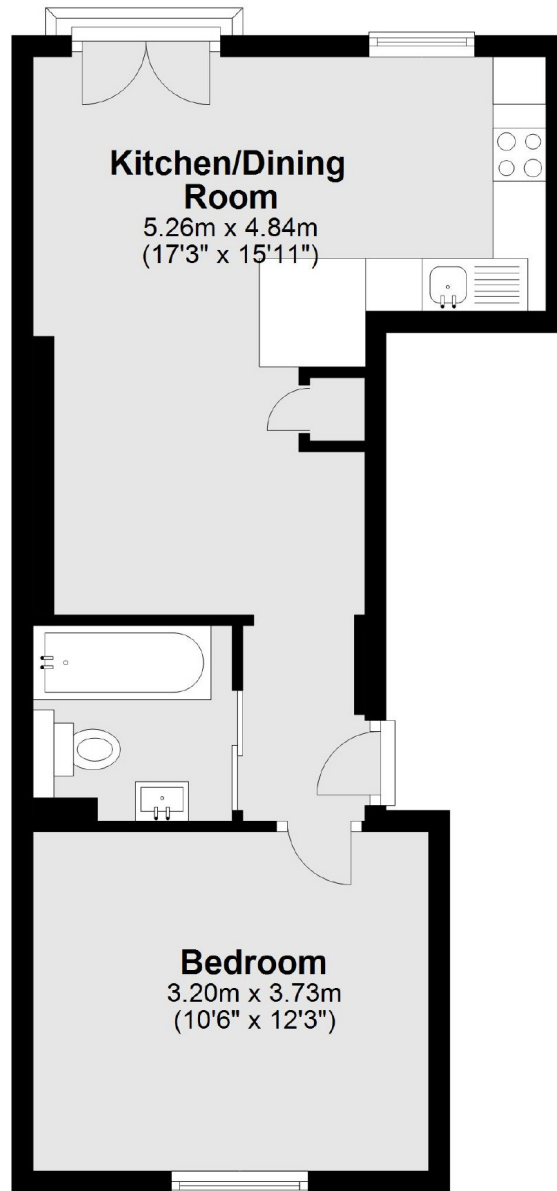
A bright and spacious well-designed flat occupying the first floor of this imposing Victorian conversion conveniently positioned along New Cross Road. Accommodation is presented in excellent decorative order and offers a large open plan living space with Juliette balcony, modern kitchen with integral appliances a good-size bedroom and stylish bathroom.

Located in the heart of New Cross with a buzzing parade of thriving independent shops, bars and restaurants. Numerous transport connections can be found on your doorstep with both New Cross and New Cross Gate providing quick and frequent mainline links to London Bridge, Blackfriars and the City.

Features

- Victorian Conversion
- One Bedroom
- Beautifully Presented
- Chain Free
- First Floor
- Excellent Transport

New Cross Road,
London, SE14



Total area: approx. 38.9 sq. metres (419.0 sq. feet)