



Musgrove Road, SE14

£675,000

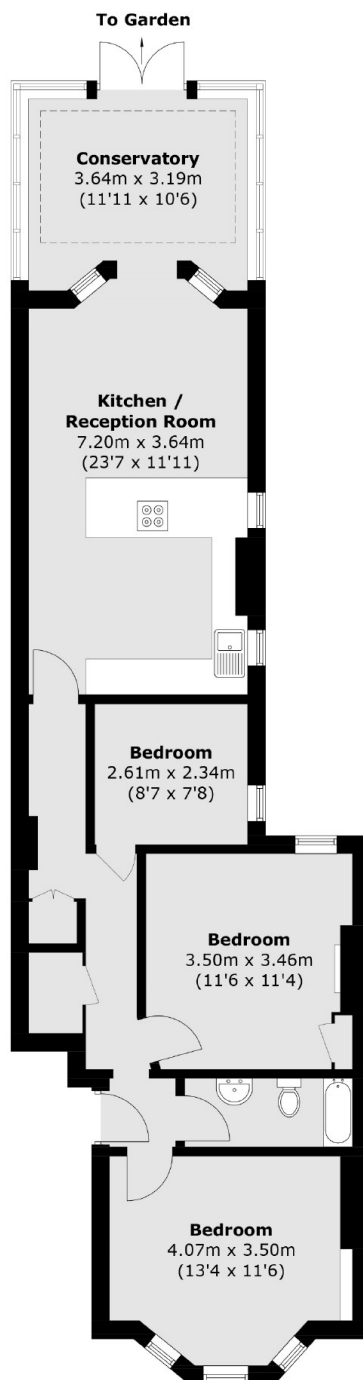
At over 900 sq ft is this three double bedroom hall floor Victorian conversion including an open plan living space, conservatory, private rear garden and modern features throughout.

The property is situated in the highly sought after Telegraph Hill Conservation area, offering easy access to New Cross Gate and New Cross Station as well as the amenities on New Cross Road.

Features

- Three Double Bedrooms
- Period features
- Private Rear Garden
- Victorian Conversion
- Open Plan Living Space
- Conservatory
- No Onward Chain

Musgrove Road, London, SE14



Total area (approx.): 83.7 sq. m (900.9 sq. ft)